

**p18 Polyclonal Antibody**  
Catalog # AP71678**Specification**

---

**p18 Polyclonal Antibody - Product Information**

Application	WB
Primary Accession	<a href="#">P42773</a>
Reactivity	Human, Mouse, Monkey
Host	Rabbit
Clonality	Polyclonal

**p18 Polyclonal Antibody - Additional Information****Gene ID** 1031**Other Names**

CDKN2C; CDKN6; Cyclin-dependent kinase 4 inhibitor C; Cyclin-dependent kinase 6 inhibitor; p18-INK4c; p18-INK6

**Dilution**

WB~~Western Blot: 1/500 - 1/2000. Immunohistochemistry: 1/100 - 1/300. ELISA: 1/20000. Not yet tested in other applications.

**Format**

Liquid in PBS containing 50% glycerol, 0.5% BSA and 0.09% (W/V) sodium azide.

**Storage Conditions**

-20°C

**p18 Polyclonal Antibody - Protein Information****Name** CDKN2C**Synonyms** CDKN6**Function**

Interacts strongly with CDK6, weakly with CDK4. Inhibits cell growth and proliferation with a correlated dependence on endogenous retinoblastoma protein RB.

**Tissue Location**

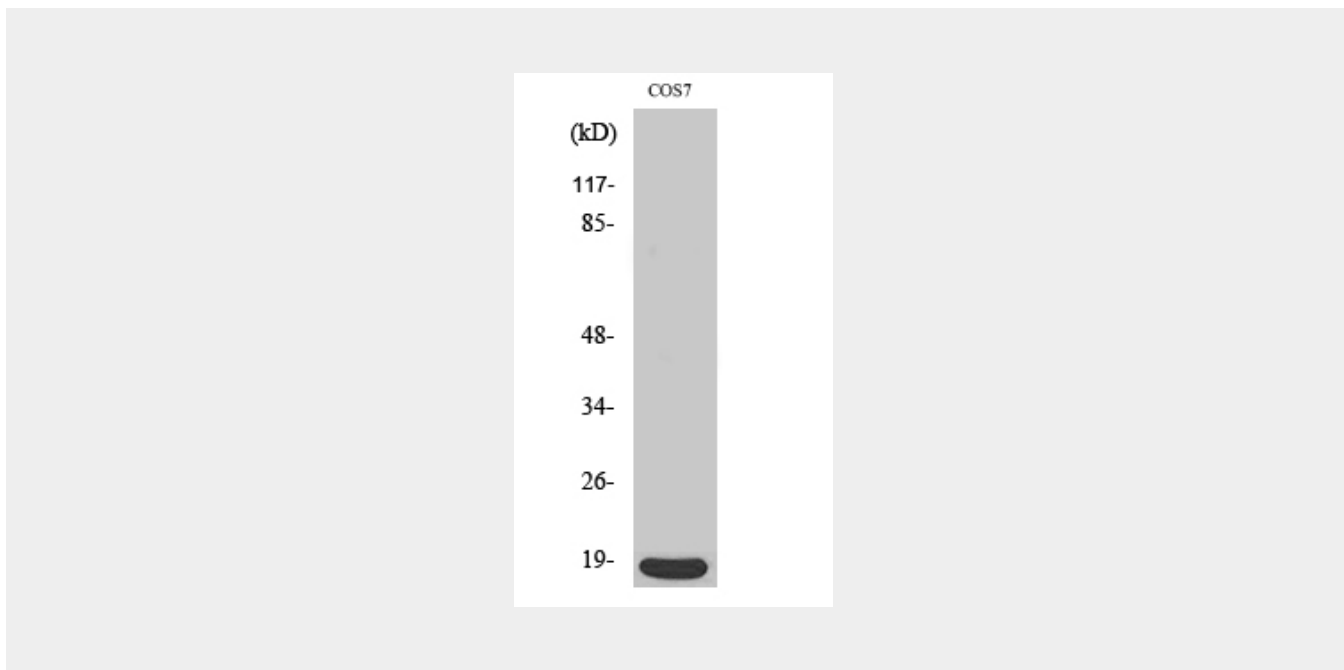
Highest levels found in skeletal muscle. Also found in pancreas and heart

**p18 Polyclonal Antibody - Protocols**

Provided below are standard protocols that you may find useful for product applications.

- [Western Blot](#)
- [Blocking Peptides](#)
- [Dot Blot](#)
- [Immunohistochemistry](#)
- [Immunofluorescence](#)
- [Immunoprecipitation](#)
- [Flow Cytometry](#)
- [Cell Culture](#)

### **p18 Polyclonal Antibody - Images**



### **p18 Polyclonal Antibody - Background**

Interacts strongly with CDK6, weakly with CDK4. Inhibits cell growth and proliferation with a correlated dependence on endogenous retinoblastoma protein RB.