

**p140Cap Polyclonal Antibody**  
Catalog # AP71674**Specification****p140Cap Polyclonal Antibody - Product Information**

Application	WB
Primary Accession	<a href="#">Q9C0H9</a>
Reactivity	Human, Mouse, Rat
Host	Rabbit
Clonality	Polyclonal

**p140Cap Polyclonal Antibody - Additional Information****Gene ID** 80725**Other Names**

SRCIN1; KIAA1684; P140; SRC kinase signaling inhibitor 1; SNAP-25-interacting protein; SNIP; p130Cas-associated protein; p140Cap

**Dilution**

WB~~Western Blot: 1/500 - 1/2000. ELISA: 1/20000. Not yet tested in other applications.

**Format**

Liquid in PBS containing 50% glycerol, 0.5% BSA and 0.09% (W/V) sodium azide.

**Storage Conditions**

-20°C

**p140Cap Polyclonal Antibody - Protein Information****Name** SRCIN1 ([HGNC:29506](#))**Function**

Acts as a negative regulator of SRC by activating CSK which inhibits SRC activity and downstream signaling, leading to impaired cell spreading and migration. Regulates dendritic spine morphology. Involved in calcium-dependent exocytosis. May play a role in neurotransmitter release or synapse maintenance.

**Cellular Location**

Cytoplasm {ECO:0000250|UniProtKB:Q9QXY2}. Cytoplasm, cytoskeleton {ECO:0000250|UniProtKB:Q9QXY2}. Cell projection, axon {ECO:0000250|UniProtKB:Q9QXY2}. Cell projection, dendrite {ECO:0000250|UniProtKB:Q9QXY2}. Presynapse {ECO:0000250|UniProtKB:Q9QXY2}. Postsynapse {ECO:0000250|UniProtKB:Q9QXY2}. Postsynaptic density {ECO:0000250|UniProtKB:Q9QXY2}. Note=Localized to the perinuclear region, lamellopodia, cortical actin and actin stress fibers but not to focal adhesions. Strongly expressed in axons and dendrites of the CA1 and CA3 hippocampal regions and of the dentate gyrus. Detected in both presynapses and postsynapses and enriched in postsynaptic density fractions. {ECO:0000250|UniProtKB:Q9QXY2}

### Tissue Location

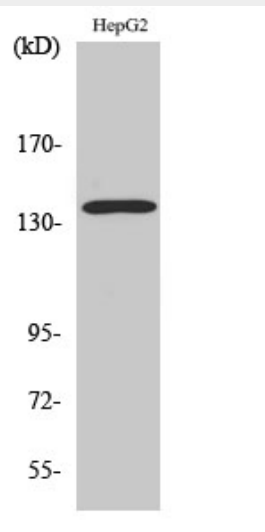
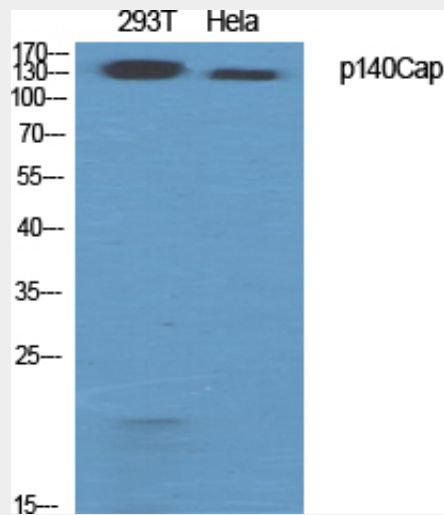
Expressed in some primary breast carcinomas where its presence is significantly associated with increased tumor size. Not detected in normal breast tissue.

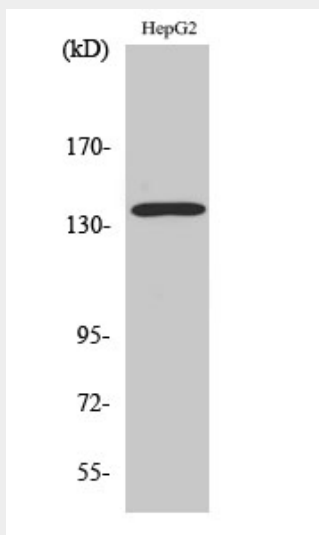
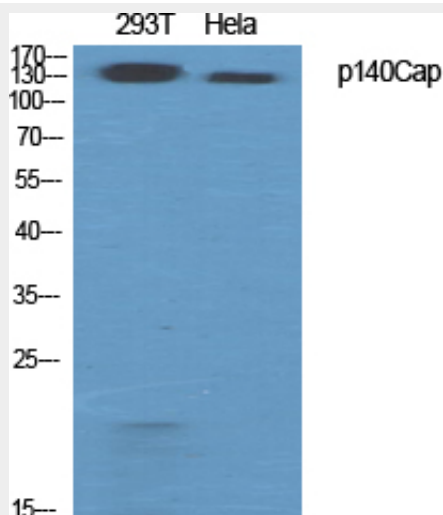
### p140Cap Polyclonal Antibody - Protocols

Provided below are standard protocols that you may find useful for product applications.

- [Western Blot](#)
- [Blocking Peptides](#)
- [Dot Blot](#)
- [Immunohistochemistry](#)
- [Immunofluorescence](#)
- [Immunoprecipitation](#)
- [Flow Cytometry](#)
- [Cell Culture](#)

### p140Cap Polyclonal Antibody - Images





### **p140Cap Polyclonal Antibody - Background**

Acts as a negative regulator of SRC by activating CSK which inhibits SRC activity and downstream signaling, leading to impaired cell spreading and migration. Regulates dendritic spine morphology. Involved in calcium-dependent exocytosis. May play a role in neurotransmitter release or synapse maintenance.