

p130 Cas Polyclonal Antibody
Catalog # AP71672**Specification**

p130 Cas Polyclonal Antibody - Product Information

Application	WB
Primary Accession	P56945
Reactivity	Human, Mouse, Rat
Host	Rabbit
Clonality	Polyclonal

p130 Cas Polyclonal Antibody - Additional Information**Gene ID** 9564**Other Names**

BCAR1; CAS; CASS1; CRKAS; Breast cancer anti-estrogen resistance protein 1; CRK-associated substrate; Cas scaffolding protein family member 1; p130cas

Dilution

WB~~Western Blot: 1/500 - 1/2000. Immunohistochemistry: 1/100 - 1/300. ELISA: 1/5000. Not yet tested in other applications.

Format

Liquid in PBS containing 50% glycerol, 0.5% BSA and 0.09% (W/V) sodium azide.

Storage Conditions

-20°C

p130 Cas Polyclonal Antibody - Protein Information**Name** BCAR1**Synonyms** CAS, CASS1, CRKAS**Function**

Docking protein which plays a central coordinating role for tyrosine kinase-based signaling related to cell adhesion (PubMed:12432078, PubMed:12832404). Implicated in induction of cell migration and cell branching (PubMed:12432078, PubMed:12832404, PubMed:17038317). Involved in the BCAR3-mediated inhibition of TGFB signaling (By similarity).

Cellular Location

Cell junction, focal adhesion. Cytoplasm Cell projection, axon {ECO:0000250|UniProtKB:Q61140} Note=Unphosphorylated form localizes in the cytoplasm (By similarity) Localizes to focal adhesion

sites following integrin engagement (By similarity). {ECO:0000250|UniProtKB:Q61140}

Tissue Location

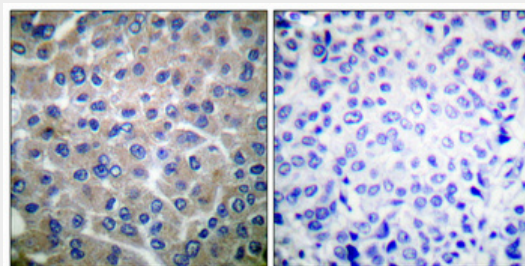
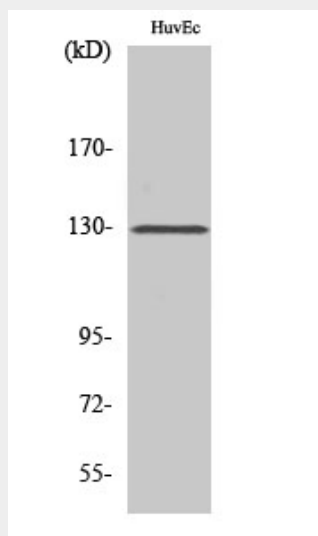
Expressed in B-cells (at protein level) (PubMed:9020138). Widely expressed with an abundant expression in the testis (PubMed:10639512). Low level of expression seen in the liver, thymus, and peripheral blood leukocytes (PubMed:10639512)

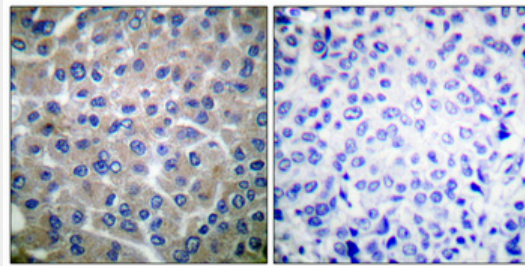
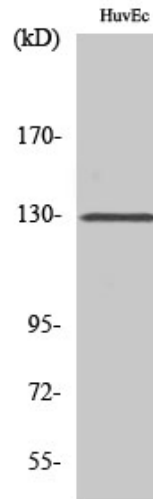
p130 Cas Polyclonal Antibody - Protocols

Provided below are standard protocols that you may find useful for product applications.

- [Western Blot](#)
- [Blocking Peptides](#)
- [Dot Blot](#)
- [Immunohistochemistry](#)
- [Immunofluorescence](#)
- [Immunoprecipitation](#)
- [Flow Cytometry](#)
- [Cell Culture](#)

p130 Cas Polyclonal Antibody - Images





p130 Cas Polyclonal Antibody - Background

Docking protein which plays a central coordinating role for tyrosine kinase-based signaling related to cell adhesion. Implicated in induction of cell migration. Overexpression confers antiestrogen resistance on breast cancer cells.