

OPN Polyclonal Antibody
Catalog # AP71650

Specification

OPN Polyclonal Antibody - Product Information

Application	WB
Primary Accession	P10451
Reactivity	Human, Mouse, Rat
Host	Rabbit
Clonality	Polyclonal

OPN Polyclonal Antibody - Additional Information

Gene ID 6696

Other Names

SPP1; BNSP; OPN; PSEC0156; Osteopontin; Bone sialoprotein 1; Nephropontin; Secreted phosphoprotein 1; SPP-1; Urinary stone protein; Uropontin

Dilution

WB~~Western Blot: 1/500 - 1/2000. Immunohistochemistry: 1/100 - 1/300. ELISA: 1/20000. Not yet tested in other applications.

Format

Liquid in PBS containing 50% glycerol, 0.5% BSA and 0.09% (W/V) sodium azide.

Storage Conditions

-20°C

OPN Polyclonal Antibody - Protein Information

Name SPP1

Synonyms BNSP, OPN

Function

Major non-collagenous bone protein that binds tightly to hydroxyapatite. Appears to form an integral part of the mineralized matrix. Probably important to cell-matrix interaction.

Cellular Location

Secreted

Tissue Location

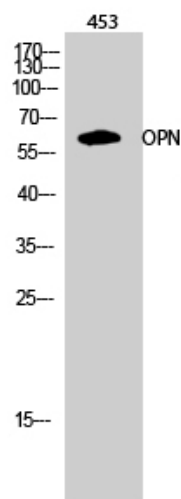
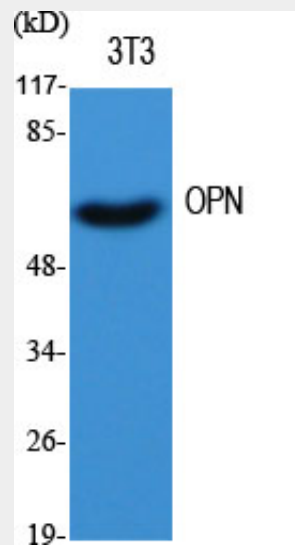
Detected in cerebrospinal fluid and urine (at protein level) (PubMed:25326458, PubMed:36213313, PubMed:37453717) Bone. Found in plasma.

OPN Polyclonal Antibody - Protocols

Provided below are standard protocols that you may find useful for product applications.

- [Western Blot](#)
- [Blocking Peptides](#)
- [Dot Blot](#)
- [Immunohistochemistry](#)
- [Immunofluorescence](#)
- [Immunoprecipitation](#)
- [Flow Cytometry](#)
- [Cell Culture](#)

OPN Polyclonal Antibody - Images



OPN Polyclonal Antibody - Background

Binds tightly to hydroxyapatite. Appears to form an integral part of the mineralized matrix.

Probably important to cell-matrix interaction.