

**NUAK2 Antibody (N-term)**  
**Purified Rabbit Polyclonal Antibody (Pab)**  
**Catalog # AP7158a**

**Specification**

---

**NUAK2 Antibody (N-term) - Product Information**

Application	WB,E
Primary Accession	<a href="#">O9H093</a>
Reactivity	Human
Host	Rabbit
Clonality	Polyclonal
Isotype	Rabbit IgG
Antigen Region	67-96

**NUAK2 Antibody (N-term) - Additional Information**

**Gene ID** 81788

**Other Names**

NUAK family SNF1-like kinase 2, Omphalocele kinase 2, SNF1/AMP kinase-related kinase, SNARK, NUAK2 {ECO:0000312|EMBL:AAH173061}, OMPHK2, SNARK

**Target/Specificity**

This NUAK2 antibody is generated from rabbits immunized with a KLH conjugated synthetic peptide between 67-96 amino acids from the N-terminal region of human NUAK2.

**Dilution**

WB~~1:1000

**Format**

Purified polyclonal antibody supplied in PBS with 0.09% (W/V) sodium azide. This antibody is prepared by Saturated Ammonium Sulfate (SAS) precipitation followed by dialysis against PBS.

**Storage**

Maintain refrigerated at 2-8°C for up to 2 weeks. For long term storage store at -20°C in small aliquots to prevent freeze-thaw cycles.

**Precautions**

NUAK2 Antibody (N-term) is for research use only and not for use in diagnostic or therapeutic procedures.

**NUAK2 Antibody (N-term) - Protein Information**

**Name** NUAK2 {ECO:0000312|EMBL:AAH17306.1}

**Synonyms** OMPHK2, SNARK

**Function** Stress-activated kinase involved in tolerance to glucose starvation. Induces cell-cell

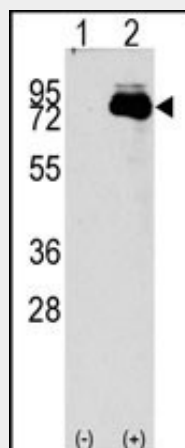
detachment by increasing F-actin conversion to G-actin. Expression is induced by CD95 or TNF-alpha, via NF-kappa-B. Protects cells from CD95-mediated apoptosis and is required for the increased motility and invasiveness of CD95-activated tumor cells. Phosphorylates LATS1 and LATS2. Plays a key role in neural tube closure during embryonic development through LATS2 phosphorylation and regulation of the nuclear localization of YAP1 a critical downstream regulatory target in the Hippo signaling pathway (PubMed:[32845958](#)).

### **NUAK2 Antibody (N-term) - Protocols**

Provided below are standard protocols that you may find useful for product applications.

- [Western Blot](#)
- [Blocking Peptides](#)
- [Dot Blot](#)
- [Immunohistochemistry](#)
- [Immunofluorescence](#)
- [Immunoprecipitation](#)
- [Flow Cytometry](#)
- [Cell Culture](#)

### **NUAK2 Antibody (N-term) - Images**



Western blot analysis of NUAK2 (arrow) using rabbit polyclonal NUAK2 Antibody (N-term) (RB08560). 293 cell lysates (2 ug/lane) either nontransfected (Lane 1) or transiently transfected with the NUAK2 gene (Lane 2) (Origene Technologies).

### **NUAK2 Antibody (N-term) - Background**

Stress-activated kinase involved in tolerance to glucose starvation. Induces cell-cell detachment by increasing F-actin conversion to G-actin. Expression is induced by CD95 or TNF-alpha, via NF-kappa-B. Protects cells from CD95-mediated apoptosis and is required for the increased motility and invasiveness of CD95-activated tumor cells.

### **NUAK2 Antibody (N-term) - References**

Lefebvre, D.L., et al., Biochem. J. 355 (Pt 2), 297-305 (2001) (): ().

### **NUAK2 Antibody (N-term) - Citations**

- [Identification of a novel substrate for TNFalpha-induced kinase NUAK2.](#)