

**LYK5 Antibody (C-term)**  
**Purified Rabbit Polyclonal Antibody (Pab)**  
**Catalog # AP7142B**

**Specification**

---

**LYK5 Antibody (C-term) - Product Information**

Application	WB,E
Primary Accession	<a href="#">Q7RTN6</a>
Reactivity	Human
Host	Rabbit
Clonality	Polyclonal
Isotype	Rabbit IgG
Calculated MW	48369
Antigen Region	364-393

**LYK5 Antibody (C-term) - Additional Information**

**Gene ID** 92335

**Other Names**

STE20-related kinase adapter protein alpha, STRAD alpha, STE20-related adapter protein, Serologically defined breast cancer antigen NY-BR-96, STRADA, LYK5 {ECO:0000312|EMBL:AAP422801}, STRAD

**Target/Specificity**

This LYK5 antibody is generated from rabbits immunized with a KLH conjugated synthetic peptide between 364-393 amino acids from the C-terminal region of human LYK5.

**Dilution**

WB~~1:1000

**Format**

Purified polyclonal antibody supplied in PBS with 0.09% (W/V) sodium azide. This antibody is prepared by Saturated Ammonium Sulfate (SAS) precipitation followed by dialysis against PBS.

**Storage**

Maintain refrigerated at 2-8°C for up to 2 weeks. For long term storage store at -20°C in small aliquots to prevent freeze-thaw cycles.

**Precautions**

LYK5 Antibody (C-term) is for research use only and not for use in diagnostic or therapeutic procedures.

**LYK5 Antibody (C-term) - Protein Information**

**Name** STRADA

**Synonyms** LYK5 {ECO:0000312|EMBL:AAP42280.1}, STRA

**Function** Pseudokinase which, in complex with CAB39/MO25 (CAB39/MO25alpha or CAB39L/MO25beta), binds to and activates STK11/LKB1. Adopts a closed conformation typical of active protein kinases and binds STK11/LKB1 as a pseudosubstrate, promoting conformational change of STK11/LKB1 in an active conformation.

#### **Cellular Location**

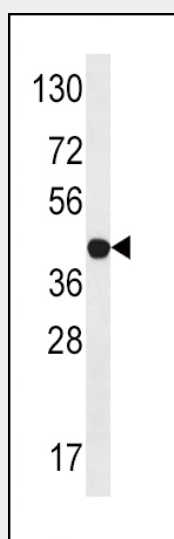
Nucleus. Cytoplasm

#### **LYK5 Antibody (C-term) - Protocols**

Provided below are standard protocols that you may find useful for product applications.

- [Western Blot](#)
- [Blocking Peptides](#)
- [Dot Blot](#)
- [Immunohistochemistry](#)
- [Immunofluorescence](#)
- [Immunoprecipitation](#)
- [Flow Cytometry](#)
- [Cell Culture](#)

#### **LYK5 Antibody (C-term) - Images**



The anti-LYK5 Pab (Cat. #AP7142b) is used in Western blot to detect LYK5 in Jurkat tissue lysate

#### **LYK5 Antibody (C-term) - Background**

LYK5, also STE20-related Adaptor Protein (STRAD) are members of STE-20 like kinase family that are known to stimulate MAPK pathways by directly activating MAPKKK. LYK5 is a novel pseudokinase member of this family consisting of a STE-20 like kinase domain but lacks several residues that are required for its catalytic activity. It specifically binds LKB1 and plays a key role in regulating tumor suppressor activities of LKB1. It functions as an upstream activator of LKB1 and also directs the sub-cellular localization of LKB1 by anchoring it in the cytoplasm. STRAD-LKB1 interaction results in phosphorylation of STRAD and enhanced autophosphorylation of LKB1.