

OBCAM Polyclonal Antibody
Catalog # AP71408**Specification**

OBCAM Polyclonal Antibody - Product Information

Application	WB
Primary Accession	Q14982
Reactivity	Human, Mouse, Rat, Monkey
Host	Rabbit
Clonality	Polyclonal

OBCAM Polyclonal Antibody - Additional Information**Gene ID** 4978**Other Names**

OPCML; IGLON1; OBCAM; Opioid-binding protein/cell adhesion molecule; OBCAM; OPCML; Opioid-binding cell adhesion molecule; IGLON family member 1

Dilution

WB~~Western Blot: 1/500 - 1/2000. ELISA: 1/10000. Not yet tested in other applications.

Format

Liquid in PBS containing 50% glycerol, 0.5% BSA and 0.09% (W/V) sodium azide.

Storage Conditions

-20°C

OBCAM Polyclonal Antibody - Protein Information**Name** OPCML**Synonyms** IGLON1, OBCAM**Function**

Binds opioids in the presence of acidic lipids; probably involved in cell contact.

Cellular Location

Cell membrane; Lipid-anchor, GPI- anchor

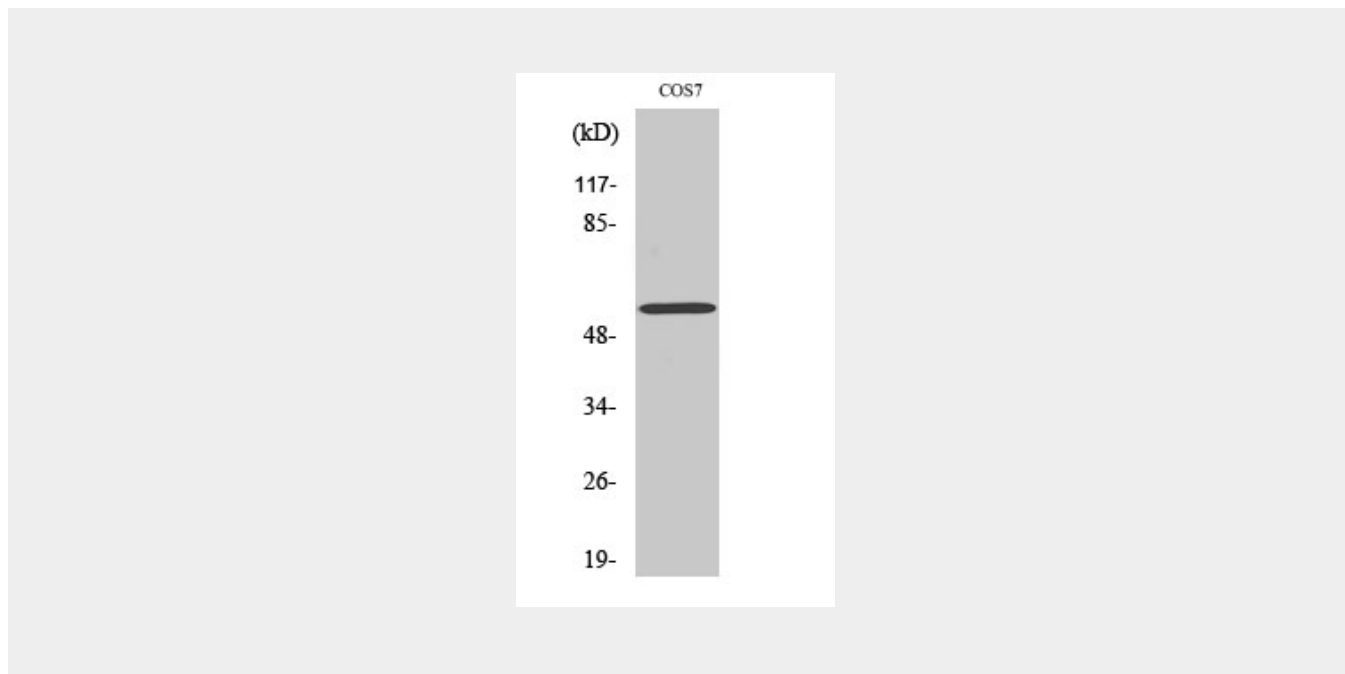
OBCAM Polyclonal Antibody - Protocols

Provided below are standard protocols that you may find useful for product applications.

- [Western Blot](#)
- [Blocking Peptides](#)

- [Dot Blot](#)
- [Immunohistochemistry](#)
- [Immunofluorescence](#)
- [Immunoprecipitation](#)
- [Flow Cytometry](#)
- [Cell Culture](#)

OBCAM Polyclonal Antibody - Images



OBCAM Polyclonal Antibody - Background

Binds opioids in the presence of acidic lipids; probably involved in cell contact.