

**Nrf3 Polyclonal Antibody**  
Catalog # AP71373**Specification**

---

**Nrf3 Polyclonal Antibody - Product Information**

Application	<b>WB</b>
Primary Accession	<a href="#">Q9Y4A8</a>
Reactivity	<b>Human</b>
Host	<b>Rabbit</b>
Clonality	<b>Polyclonal</b>

**Nrf3 Polyclonal Antibody - Additional Information****Gene ID** 9603**Other Names**

NFE2L3; NRF3; Nuclear factor erythroid 2-related factor 3; NF-E2-related factor 3; NFE2-related factor 3; Nuclear factor; erythroid derived 2, like 3

**Dilution**

WB~~Western Blot: 1/500 - 1/2000. ELISA: 1/10000. Not yet tested in other applications.

**Format**

Liquid in PBS containing 50% glycerol, 0.5% BSA and 0.09% (W/V) sodium azide.

**Storage Conditions**

-20°C

**Nrf3 Polyclonal Antibody - Protein Information****Name** NFE2L3**Synonyms** NRF3**Function**

Activates erythroid-specific, globin gene expression.

**Cellular Location**

Nucleus {ECO:0000255|PROSITE-ProRule:PRU00978}.

**Tissue Location**

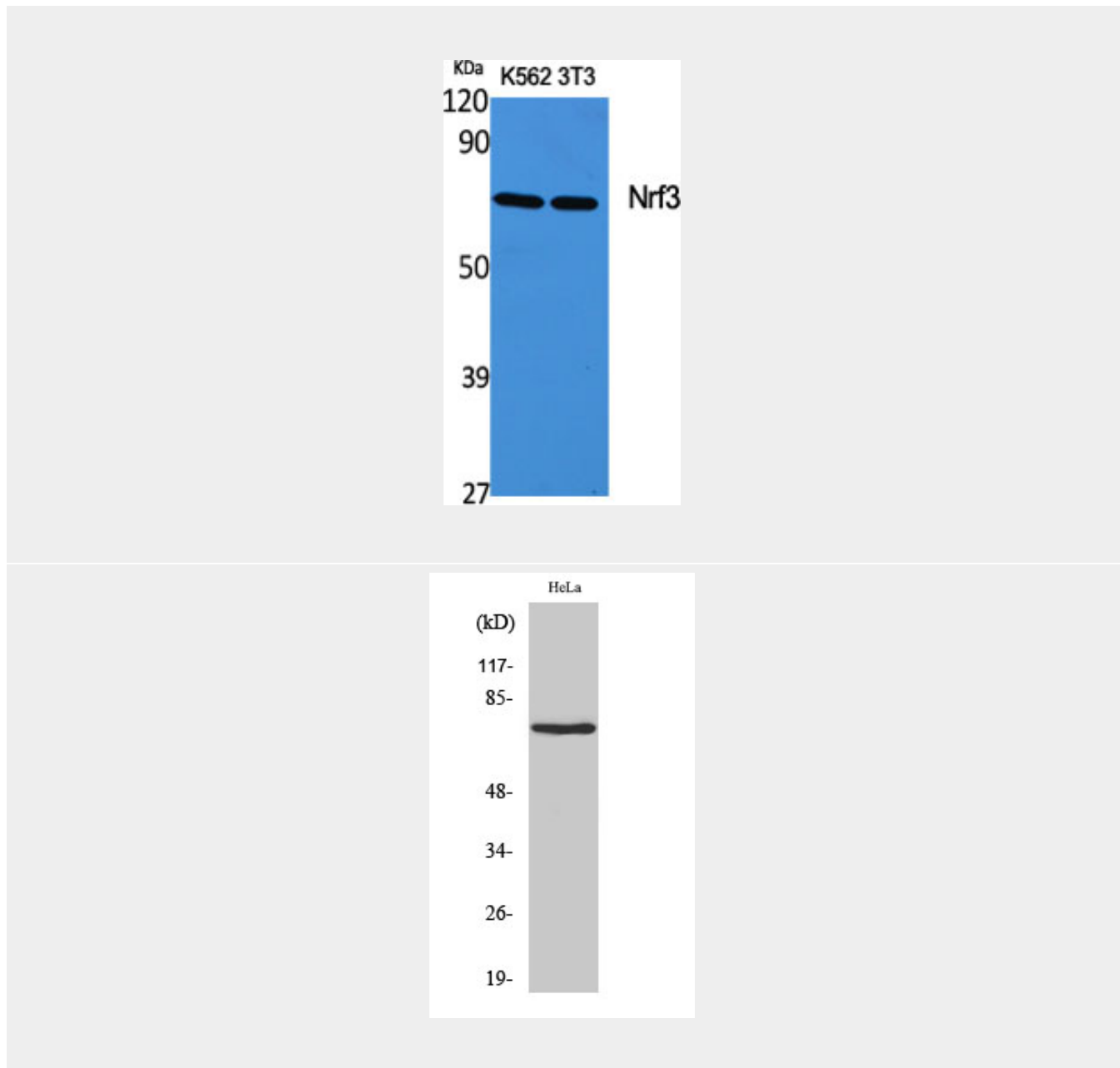
Highly expressed in human placenta and also in B- cell and monocyte cell lines. Low expression in heart, brain, lung, skeletal muscle, kidney and pancreas.

**Nrf3 Polyclonal Antibody - Protocols**

Provided below are standard protocols that you may find useful for product applications.

- [Western Blot](#)
- [Blocking Peptides](#)
- [Dot Blot](#)
- [Immunohistochemistry](#)
- [Immunofluorescence](#)
- [Immunoprecipitation](#)
- [Flow Cytometry](#)
- [Cell Culture](#)

### Nrf3 Polyclonal Antibody - Images



### Nrf3 Polyclonal Antibody - Background

Activates erythroid-specific, globin gene expression.