

**NPY5-R Polyclonal Antibody**  
Catalog # AP71368**Specification**

---

**NPY5-R Polyclonal Antibody - Product Information**

Application	WB
Primary Accession	<a href="#">Q15761</a>
Reactivity	Human, Mouse, Rat
Host	Rabbit
Clonality	Polyclonal

**NPY5-R Polyclonal Antibody - Additional Information****Gene ID** 4889**Other Names**

NPY5R; NPYR5; Neuropeptide Y receptor type 5; NPY5-R; NPY-Y5 receptor; NPYY5-R; Y5 receptor

**Dilution**

WB~~Western Blot: 1/500 - 1/2000. Immunohistochemistry: 1/100 - 1/300. Immunofluorescence: 1/200 - 1/1000. ELISA: 1/20000. Not yet tested in other applications.

**Format**

Liquid in PBS containing 50% glycerol, 0.5% BSA and 0.09% (W/V) sodium azide.

**Storage Conditions**

-20°C

**NPY5-R Polyclonal Antibody - Protein Information****Name** NPY5R**Synonyms** NPYR5**Function**

Receptor for neuropeptide Y and peptide YY. The activity of this receptor is mediated by G proteins that inhibit adenylate cyclase activity. Seems to be associated with food intake. Could be involved in feeding disorders.

**Cellular Location**

Cell membrane; Multi-pass membrane protein.

**Tissue Location**

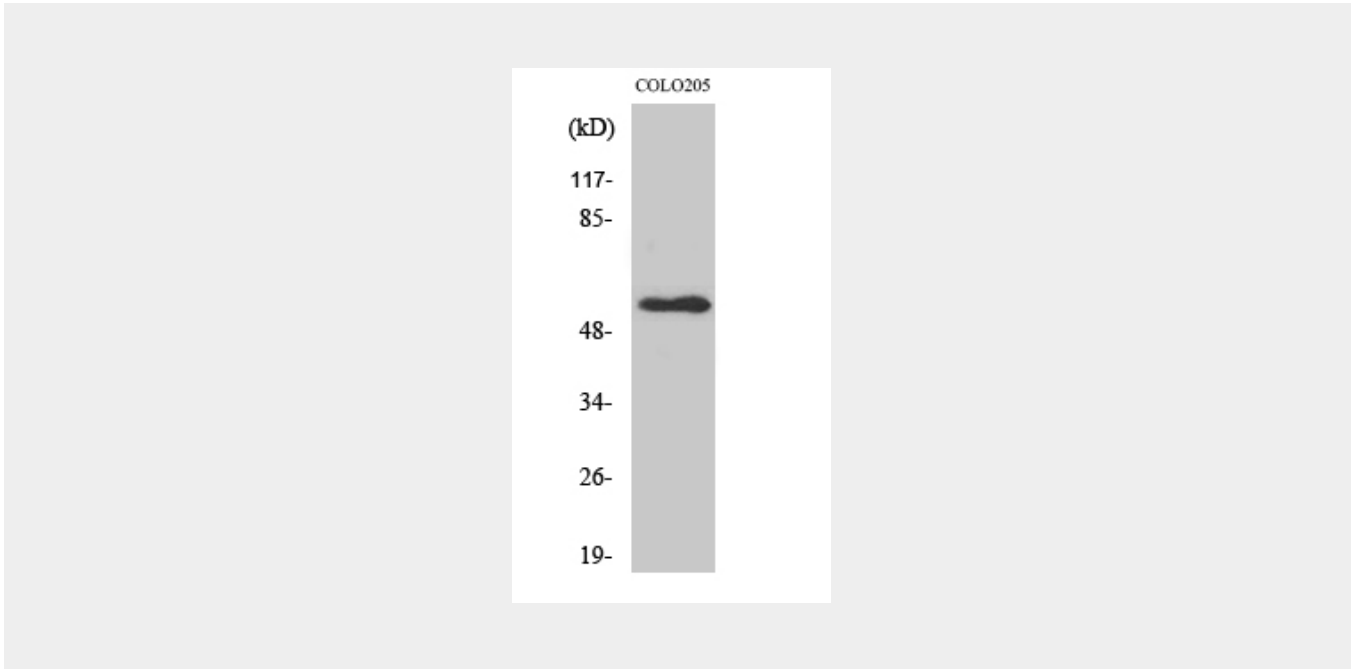
Brain; hypothalamus.

**NPY5-R Polyclonal Antibody - Protocols**

Provided below are standard protocols that you may find useful for product applications.

- [Western Blot](#)
- [Blocking Peptides](#)
- [Dot Blot](#)
- [Immunohistochemistry](#)
- [Immunofluorescence](#)
- [Immunoprecipitation](#)
- [Flow Cytometry](#)
- [Cell Culture](#)

#### **NPY5-R Polyclonal Antibody - Images**



#### **NPY5-R Polyclonal Antibody - Background**

Receptor for neuropeptide Y and peptide YY. The activity of this receptor is mediated by G proteins that inhibit adenylate cyclase activity. Seems to be associated with food intake. Could be involved in feeding disorders.