

NP220 Polyclonal Antibody
Catalog # AP71360**Specification****NP220 Polyclonal Antibody - Product Information**

| | |
|-------------------|------------------------|
| Application | WB |
| Primary Accession | Q14966 |
| Reactivity | Human |
| Host | Rabbit |
| Clonality | Polyclonal |

NP220 Polyclonal Antibody - Additional Information**Gene ID** 27332**Other Names**

ZNF638; NP220; ZFML; Zinc finger protein 638; Cutaneous T-cell lymphoma-associated antigen se33-1; CTCL-associated antigen se33-1; Nuclear protein 220; Zinc finger matrin-like protein

Dilution

WB~~Western Blot: 1/500 - 1/2000. Immunohistochemistry: 1/100 - 1/300. ELISA: 1/20000. Not yet tested in other applications.

Format

Liquid in PBS containing 50% glycerol, 0.5% BSA and 0.09% (W/V) sodium azide.

Storage Conditions

-20°C

NP220 Polyclonal Antibody - Protein Information**Name** ZNF638**Synonyms** NP220 {ECO:0000303|PubMed:8647861}, ZFML**Function**

Transcription factor that binds to cytidine clusters in double-stranded DNA (PubMed: 30487602, PubMed: 8647861). Plays a key role in the silencing of unintegrated retroviral DNA: some part of the retroviral DNA formed immediately after infection remains unintegrated in the host genome and is transcriptionally repressed (PubMed: 30487602). Mediates transcriptional repression of unintegrated viral DNA by specifically binding to the cytidine clusters of retroviral DNA and mediating the recruitment of chromatin silencers, such as the HUSH complex, SETDB1 and the histone deacetylases HDAC1 and HDAC4 (PubMed: 30487602). Acts as an early regulator of adipogenesis by acting as a transcription cofactor of CEBPs (CEBPA, CEBPD and/or CEBPG), controlling the expression of PPARG

and probably of other proadipogenic genes, such as SREBF1 (By similarity). May also regulate alternative splicing of target genes during adipogenesis (By similarity).

Cellular Location

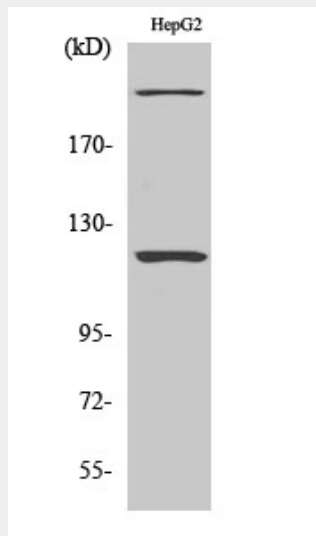
Nucleus speckle {ECO:0000255|PROSITE- ProRule:PRU00130, ECO:0000269|PubMed:11813260, ECO:0000269|PubMed:8647861}

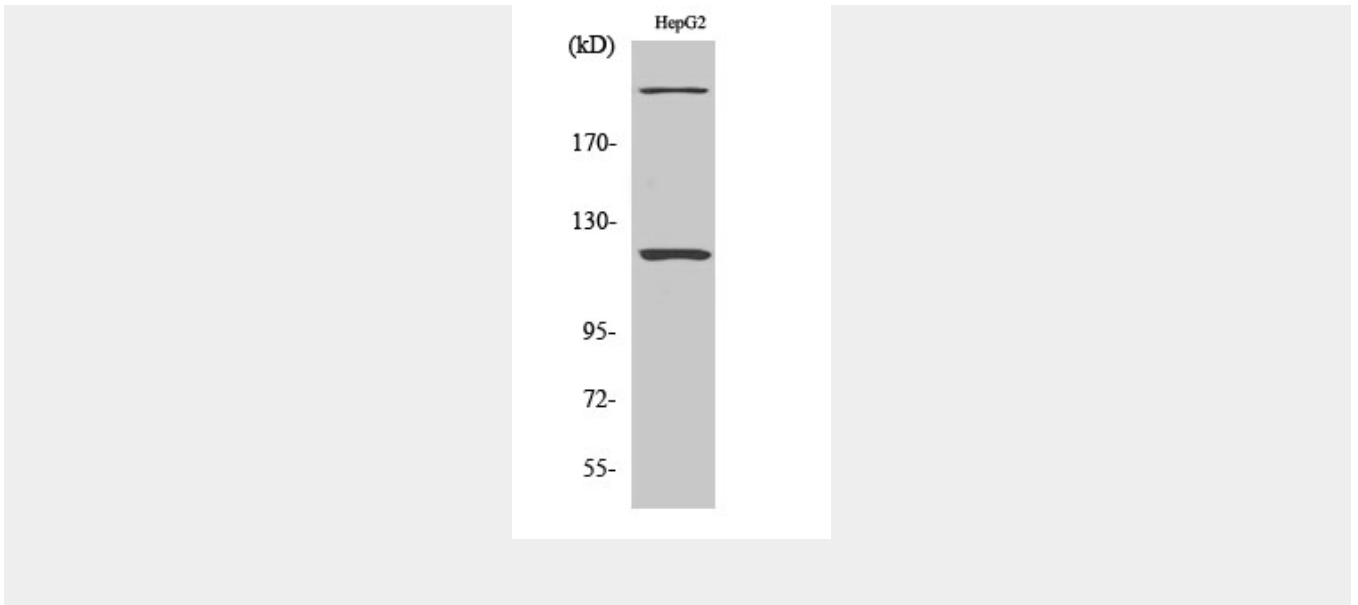
NP220 Polyclonal Antibody - Protocols

Provided below are standard protocols that you may find useful for product applications.

- [Western Blot](#)
- [Blocking Peptides](#)
- [Dot Blot](#)
- [Immunohistochemistry](#)
- [Immunofluorescence](#)
- [Immunoprecipitation](#)
- [Flow Cytometry](#)
- [Cell Culture](#)

NP220 Polyclonal Antibody - Images





NP220 Polyclonal Antibody - Background

Early regulator of adipogenesis that works as a transcription cofactor of CEBPs, controlling the expression of PPARG and probably of other proadipogenic genes, such as SREBF1 (By similarity). Binds to cytidine clusters in double-stranded DNA (PubMed:8647861). May also regulate alternative splicing of target genes during adipogenesis (By similarity).