

Neurofibromin Polyclonal Antibody Catalog # AP71248

Specification

Neurofibromin Polyclonal Antibody - Product Information

Application	WB
Primary Accession	P21359
Reactivity	Human, Mouse, Rat
Host	Rabbit
Clonality	Polyclonal

Neurofibromin Polyclonal Antibody - Additional Information

Gene ID 4763

Other Names

NF1; Neurofibromin; Neurofibromatosis-related protein NF-1

Dilution

WB~~Western Blot: 1/500 - 1/2000. Immunofluorescence: 1/200 - 1/1000. ELISA: 1/20000. Not yet tested in other applications.

Format

Liquid in PBS containing 50% glycerol, 0.5% BSA and 0.09% (W/V) sodium azide.

Storage Conditions

-20°C

Neurofibromin Polyclonal Antibody - Protein Information

Name NF1

Function

Stimulates the GTPase activity of Ras. NF1 shows greater affinity for Ras GAP, but lower specific activity. May be a regulator of Ras activity.

Cellular Location

Nucleus. Nucleus, nucleolus. Cell membrane

Tissue Location

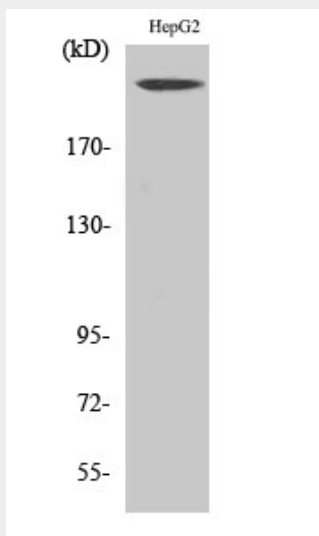
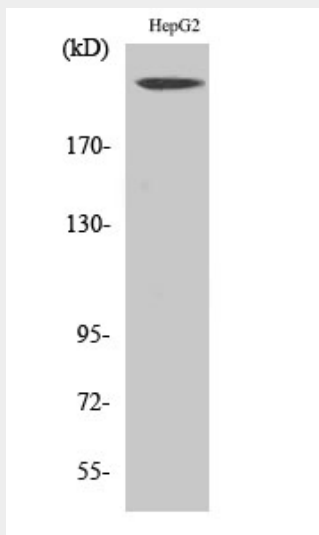
Detected in brain, peripheral nerve, lung, colon and muscle.

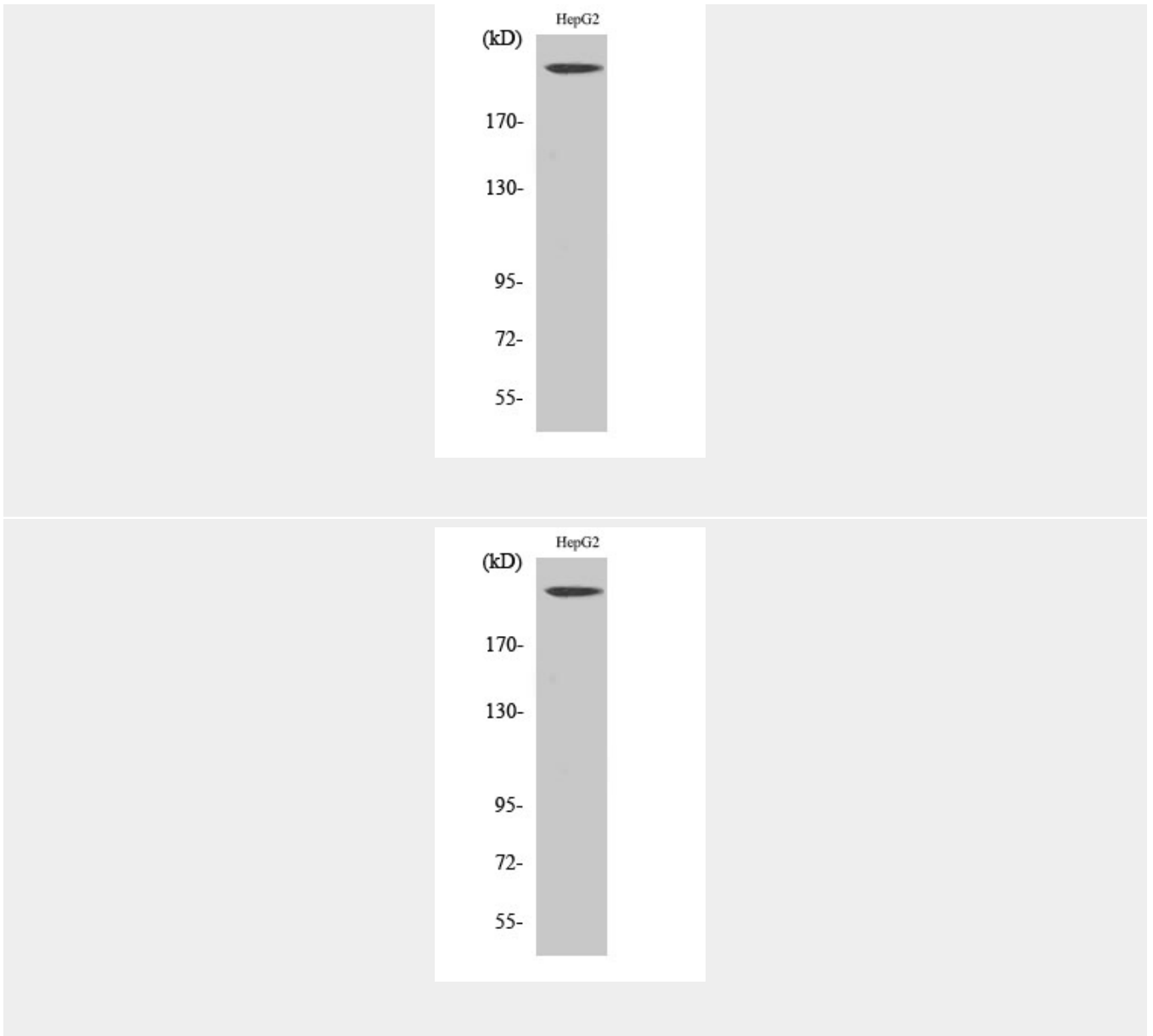
Neurofibromin Polyclonal Antibody - Protocols

Provided below are standard protocols that you may find useful for product applications.

- [Western Blot](#)
- [Blocking Peptides](#)
- [Dot Blot](#)
- [Immunohistochemistry](#)
- [Immunofluorescence](#)
- [Immunoprecipitation](#)
- [Flow Cytometry](#)
- [Cell Culture](#)

Neurofibromin Polyclonal Antibody - Images





Neurofibromin Polyclonal Antibody - Background

Stimulates the GTPase activity of Ras. NF1 shows greater affinity for Ras GAP, but lower specific activity. May be a regulator of Ras activity.