

Nectin 3 Polyclonal Antibody
Catalog # AP71207**Specification**

Nectin 3 Polyclonal Antibody - Product Information

Application	WB
Primary Accession	Q9NQS3
Reactivity	Human, Mouse
Host	Rabbit
Clonality	Polyclonal

Nectin 3 Polyclonal Antibody - Additional Information**Gene ID** 25945**Other Names**

PVRL3; PRR3; Poliovirus receptor-related protein 3; CDw113; Nectin-3; CD antigen CD113

Dilution

WB~~Western Blot: 1/500 - 1/2000. ELISA: 1/5000. Not yet tested in other applications.

Format

Liquid in PBS containing 50% glycerol, 0.5% BSA and 0.09% (W/V) sodium azide.

Storage Conditions

-20°C

Nectin 3 Polyclonal Antibody - Protein Information**Name** NECTIN3 ([HGNC:17664](#))**Synonyms** PRR3, PVRL3**Function**

Cell adhesion molecule that promotes cell-cell adhesion through heterophilic trans-interactions with nectins-like or other nectins, such as trans-interaction with NECTIN2 at Sertoli-spermatid junctions (PubMed:<[a href="http://www.uniprot.org/citations/16216929" target="_blank">16216929](http://www.uniprot.org/citations/16216929)). Trans-interaction with PVR induces activation of CDC42 and RAC small G proteins through common signaling molecules such as SRC and RAP1 (PubMed:<[a href="http://www.uniprot.org/citations/16216929" target="_blank">16216929](http://www.uniprot.org/citations/16216929)). Induces endocytosis- mediated down-regulation of PVR from the cell surface, resulting in reduction of cell movement and proliferation (PubMed:<[a href="http://www.uniprot.org/citations/16216929" target="_blank">16216929](http://www.uniprot.org/citations/16216929)). Involved in axon guidance by promoting contacts between the commissural axons and the floor plate cells (By similarity). Also involved in the formation of cell-cell junctions, including adherens junctions and synapses (By similarity). Promotes formation of checkerboard-like cellular pattern of hair cells and supporting cells in the auditory epithelium via heterophilic interaction with NECTIN1: NECTIN1 is present in the membrane of hair cells and associates with NECTIN3 on supporting cells, thereby mediating heterotypic adhesion between

these two cell types (By similarity). Plays a role in the morphology of the ciliary body (By similarity).

Cellular Location

Cell membrane; Single-pass membrane protein. Postsynaptic cell membrane {ECO:0000250|UniProtKB:Q9JLB9}; Single-pass type I membrane protein. Cell junction, adherens junction {ECO:0000250|UniProtKB:Q9JLB9}. Note=In the auditory epithelium, specifically localizes to the apical side of the lateral membranes of supporting cells. {ECO:0000250|UniProtKB:Q9JLB9}

Tissue Location

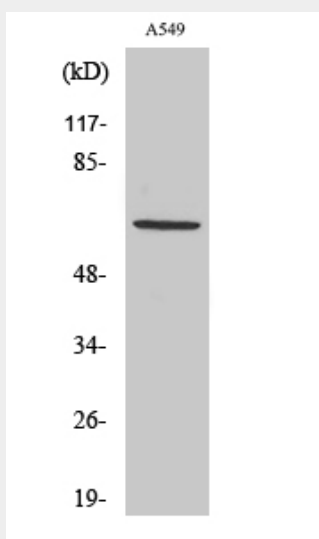
Predominantly expressed in testis and placenta as well as in many cell lines, including epithelial cell lines

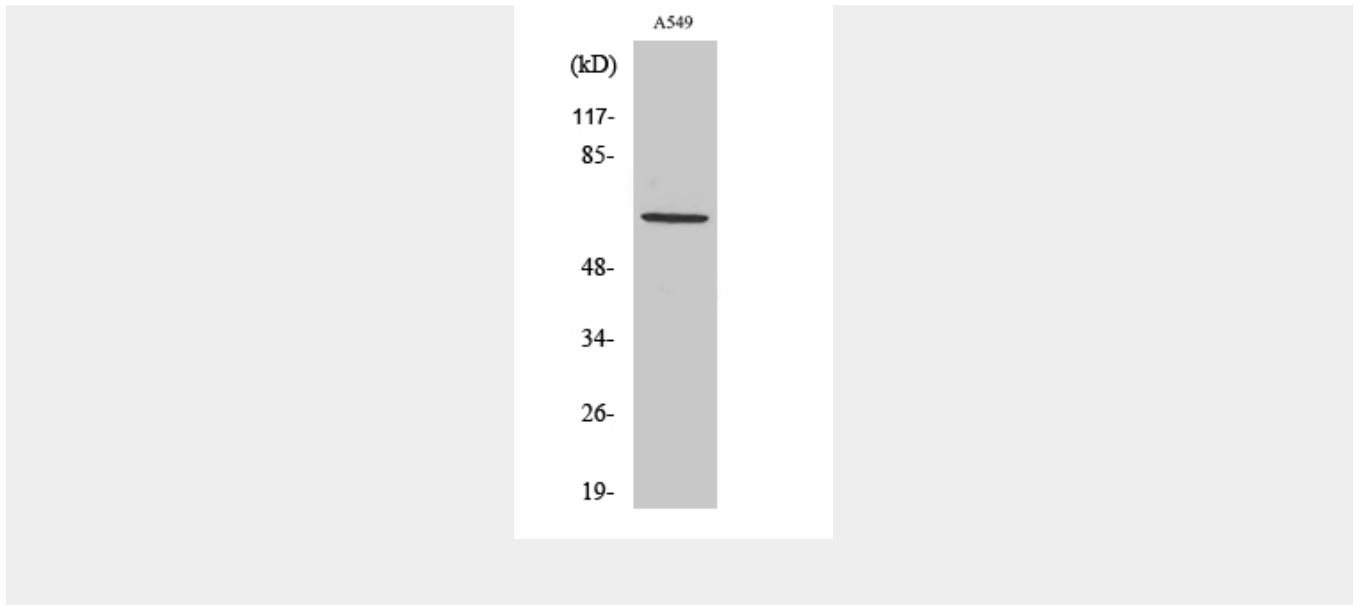
Nectin 3 Polyclonal Antibody - Protocols

Provided below are standard protocols that you may find useful for product applications.

- [Western Blot](#)
- [Blocking Peptides](#)
- [Dot Blot](#)
- [Immunohistochemistry](#)
- [Immunofluorescence](#)
- [Immunoprecipitation](#)
- [Flow Cytometry](#)
- [Cell Culture](#)

Nectin 3 Polyclonal Antibody - Images





Nectin 3 Polyclonal Antibody - Background

Plays a role in cell-cell adhesion through heterophilic trans-interactions with nectin-like proteins or nectins, such as trans-interaction with NECTIN2 at Sertoli-spermatid junctions. Trans-interaction with PVR induces activation of CDC42 and RAC small G proteins through common signaling molecules such as SRC and RAP1. Also involved in the formation of cell-cell junctions, including adherens junctions and synapses. Induces endocytosis-mediated down-regulation of PVR from the cell surface, resulting in reduction of cell movement and proliferation. Plays a role in the morphology of the ciliary body.