

NDUFB9 Polyclonal Antibody
Catalog # AP71197**Specification**

NDUFB9 Polyclonal Antibody - Product Information

Application	WB
Primary Accession	Q9Y6M9
Reactivity	Human
Host	Rabbit
Clonality	Polyclonal

NDUFB9 Polyclonal Antibody - Additional Information**Gene ID** 4715**Other Names**

NDUFB9; LYRM3; UQOR22; NADH dehydrogenase [ubiquinone] 1 beta subcomplex subunit 9; Complex I-B22; CI-B22; LYR motif-containing protein 3; NADH-ubiquinone oxidoreductase B22 subunit

Dilution

WB~~Western Blot: 1/500 - 1/2000. Immunohistochemistry: 1/100 - 1/300. ELISA: 1/10000. Not yet tested in other applications.

Format

Liquid in PBS containing 50% glycerol, 0.5% BSA and 0.09% (W/V) sodium azide.

Storage Conditions

-20°C

NDUFB9 Polyclonal Antibody - Protein Information**Name** NDUFB9**Synonyms** LYRM3, UQOR22**Function**

Accessory subunit of the mitochondrial membrane respiratory chain NADH dehydrogenase (Complex I), that is believed to be not involved in catalysis. Complex I functions in the transfer of electrons from NADH to the respiratory chain. The immediate electron acceptor for the enzyme is believed to be ubiquinone.

Cellular Location

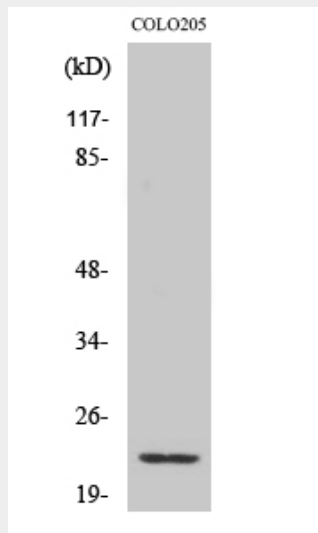
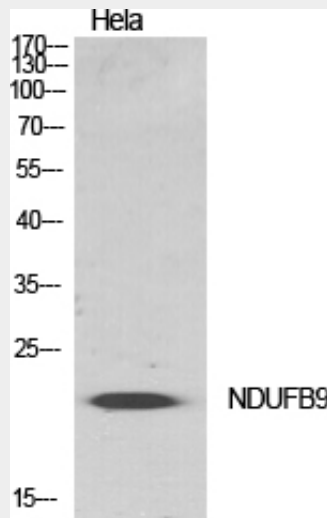
Mitochondrion inner membrane; Peripheral membrane protein; Matrix side

NDUFB9 Polyclonal Antibody - Protocols

Provided below are standard protocols that you may find useful for product applications.

- [Western Blot](#)
- [Blocking Peptides](#)
- [Dot Blot](#)
- [Immunohistochemistry](#)
- [Immunofluorescence](#)
- [Immunoprecipitation](#)
- [Flow Cytometry](#)
- [Cell Culture](#)

NDUFB9 Polyclonal Antibody - Images



NDUFB9 Polyclonal Antibody - Background

Accessory subunit of the mitochondrial membrane respiratory chain NADH dehydrogenase (Complex I), that is believed to be not involved in catalysis. Complex I functions in the transfer of electrons from NADH to the respiratory chain. The immediate electron acceptor for the enzyme is believed to be ubiquinone.