

**NDUFA8 Polyclonal Antibody**  
Catalog # AP71193**Specification****NDUFA8 Polyclonal Antibody - Product Information**

Application	<b>WB</b>
Primary Accession	<a href="#">P51970</a>
Reactivity	<b>Human, Mouse</b>
Host	<b>Rabbit</b>
Clonality	<b>Polyclonal</b>

**NDUFA8 Polyclonal Antibody - Additional Information****Gene ID** 4702**Other Names**

NDUFA8; NADH dehydrogenase [ubiquinone] 1 alpha subcomplex subunit 8; Complex I-19kD; CI-19kD; Complex I-PGIV; CI-PGIV; NADH-ubiquinone oxidoreductase 19 kDa subunit

**Dilution**

WB~~Western Blot: 1/500 - 1/2000. Immunohistochemistry: 1/100 - 1/300. ELISA: 1/40000. Not yet tested in other applications.

**Format**

Liquid in PBS containing 50% glycerol, 0.5% BSA and 0.09% (W/V) sodium azide.

**Storage Conditions**

-20°C

**NDUFA8 Polyclonal Antibody - Protein Information****Name** NDUFA8**Function**

Accessory subunit of the mitochondrial membrane respiratory chain NADH dehydrogenase (Complex I), that is believed not to be involved in catalysis (PubMed:<a href="http://www.uniprot.org/citations/27626371" target="\_blank">27626371</a>, PubMed:<a href="http://www.uniprot.org/citations/32385911" target="\_blank">32385911</a>, PubMed:<a href="http://www.uniprot.org/citations/33153867" target="\_blank">33153867</a>). Complex I functions in the transfer of electrons from NADH to the respiratory chain (PubMed:<a href="http://www.uniprot.org/citations/27626371" target="\_blank">27626371</a>). The immediate electron acceptor for the enzyme is believed to be ubiquinone (PubMed:<a href="http://www.uniprot.org/citations/27626371" target="\_blank">27626371</a>).

**Cellular Location**

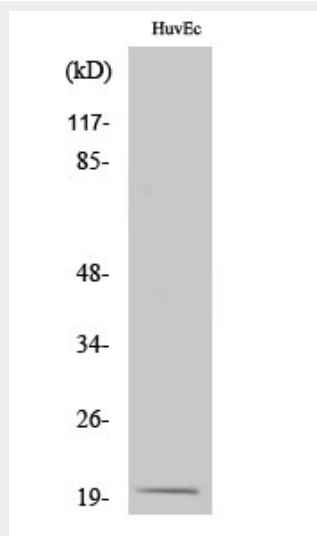
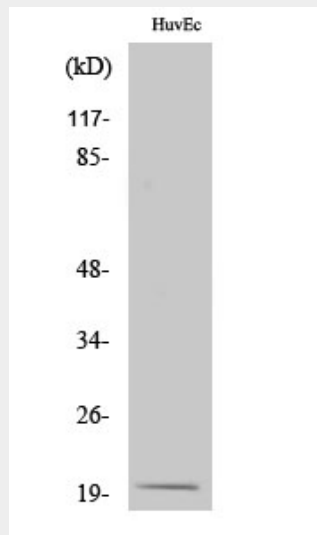
Mitochondrion inner membrane; Peripheral membrane protein. Mitochondrion intermembrane space. Mitochondrion

## NDUFA8 Polyclonal Antibody - Protocols

Provided below are standard protocols that you may find useful for product applications.

- [Western Blot](#)
- [Blocking Peptides](#)
- [Dot Blot](#)
- [Immunohistochemistry](#)
- [Immunofluorescence](#)
- [Immunoprecipitation](#)
- [Flow Cytometry](#)
- [Cell Culture](#)

## NDUFA8 Polyclonal Antibody - Images



## NDUFA8 Polyclonal Antibody - Background

Accessory subunit of the mitochondrial membrane respiratory chain NADH dehydrogenase (Complex I), that is believed not to be involved in catalysis. Complex I functions in the transfer of electrons from NADH to the respiratory chain. The immediate electron acceptor for the enzyme is believed to be ubiquinone.