

NDR2 Polyclonal Antibody
Catalog # AP71186**Specification**

NDR2 Polyclonal Antibody - Product Information

Application	WB
Primary Accession	Q9Y2H1
Reactivity	Human, Mouse, Rat
Host	Rabbit
Clonality	Polyclonal

NDR2 Polyclonal Antibody - Additional Information**Gene ID** 23012**Other Names**

STK38L; KIAA0965; NDR2; Serine/threonine-protein kinase 38-like; NDR2 protein kinase; Nuclear Dbf2-related kinase 2

Dilution

WB~~Western Blot: 1/500 - 1/2000.IHC-p:1:50-300 ELISA: 1/20000. Not yet tested in other applications.

Format

Liquid in PBS containing 50% glycerol, 0.5% BSA and 0.09% (W/V) sodium azide.

Storage Conditions

-20°C

NDR2 Polyclonal Antibody - Protein Information**Name** STK38L {ECO:0000312|EMBL:AAH28603.1}**Function**

Involved in the regulation of structural processes in differentiating and mature neuronal cells.

Cellular Location

Cytoplasm. Cytoplasm, cytoskeleton. Membrane. Note=Associated with the actin cytoskeleton. Co-localizes with STK24/MST3 in the membrane

Tissue Location

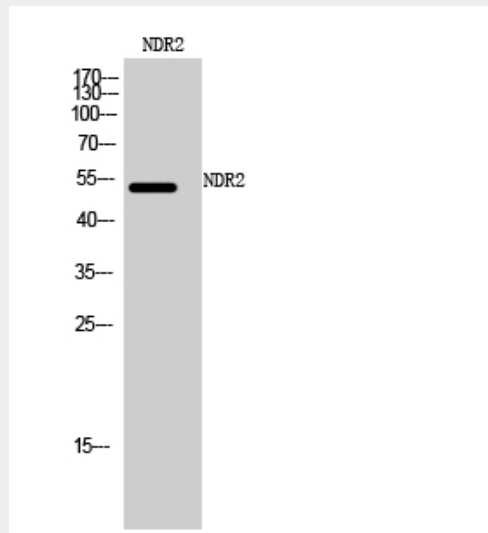
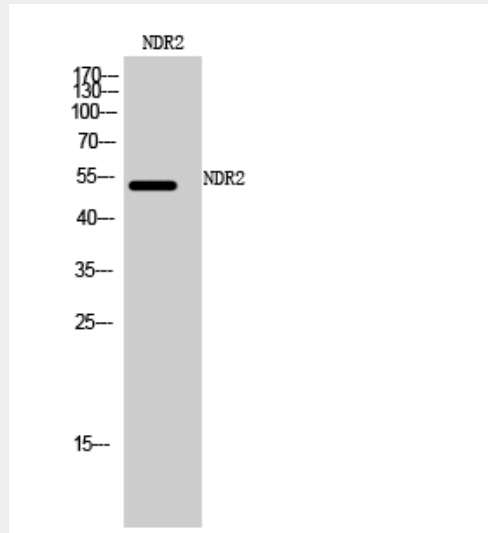
Ubiquitously expressed with highest levels observed in the thymus.

NDR2 Polyclonal Antibody - Protocols

Provided below are standard protocols that you may find useful for product applications.

- [Western Blot](#)
- [Blocking Peptides](#)
- [Dot Blot](#)
- [Immunohistochemistry](#)
- [Immunofluorescence](#)
- [Immunoprecipitation](#)
- [Flow Cytometry](#)
- [Cell Culture](#)

NDR2 Polyclonal Antibody - Images



NDR2 Polyclonal Antibody - Background

Involved in the regulation of structural processes in differentiating and mature neuronal cells.