

N-cadherin Polyclonal Antibody
Catalog # AP71171**Specification**

N-cadherin Polyclonal Antibody - Product Information

| | |
|-------------------|------------------------|
| Application | WB |
| Primary Accession | P19022 |
| Reactivity | Human, Mouse, Rat |
| Host | Rabbit |
| Clonality | Polyclonal |

N-cadherin Polyclonal Antibody - Additional Information**Gene ID** 1000**Other Names**

CDH2; CDHN; NCAD; Cadherin-2; CDw325; Neural cadherin; N-cadherin; CD antigen CD325

Dilution

WB~~Western Blot: 1/500 - 1/2000. Immunohistochemistry: 1/100 - 1/300. Immunofluorescence: 1/200 - 1/1000. ELISA: 1/10000. Not yet tested in other applications.

Format

Liquid in PBS containing 50% glycerol, 0.5% BSA and 0.09% (W/V) sodium azide.

Storage Conditions

-20°C

N-cadherin Polyclonal Antibody - Protein Information**Name** CDH2**Synonyms** CDHN, NCAD**Function**

Calcium-dependent cell adhesion protein; preferentially mediates homotypic cell-cell adhesion by dimerization with a CDH2 chain from another cell. Cadherins may thus contribute to the sorting of heterogeneous cell types. Acts as a regulator of neural stem cells quiescence by mediating anchorage of neural stem cells to ependymocytes in the adult subependymal zone: upon cleavage by MMP24, CDH2-mediated anchorage is affected, leading to modulate neural stem cell quiescence. Plays a role in cell-to-cell junction formation between pancreatic beta cells and neural crest stem (NCS) cells, promoting the formation of processes by NCS cells (By similarity). Required for proper neurite branching. Required for pre- and postsynaptic organization (By similarity). CDH2 may be involved in neuronal recognition mechanism. In hippocampal neurons, may regulate dendritic spine density.

Cellular Location

Cell membrane; Single-pass type I membrane protein. Cell membrane, sarcolemma

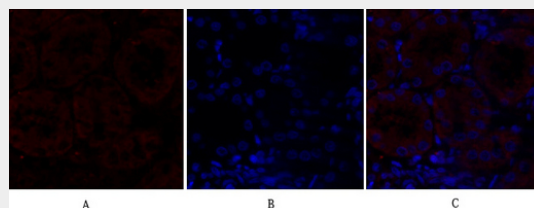
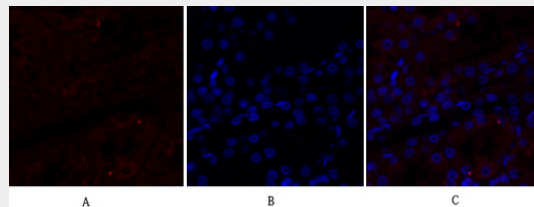
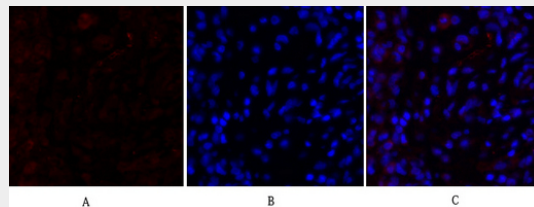
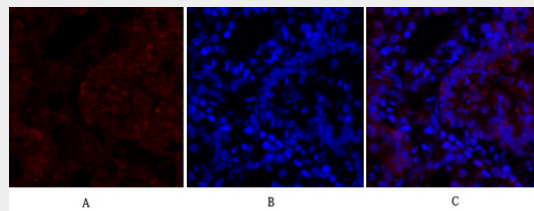
{ECO:0000250|UniProtKB:P15116}. Cell junction. Cell surface {ECO:0000250|UniProtKB:P15116}. Cell junction, desmosome {ECO:0000250|UniProtKB:P15116}. Cell junction, adherens junction {ECO:0000250|UniProtKB:P15116}. Note=Colocalizes with TMEM65 at the intercalated disk in cardiomyocytes. Colocalizes with OBSCN at the intercalated disk and at sarcolemma in cardiomyocytes {ECO:0000250|UniProtKB:P15116}

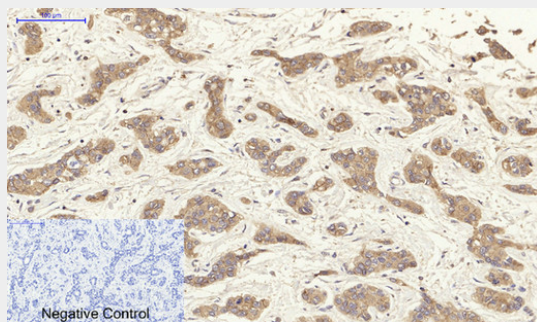
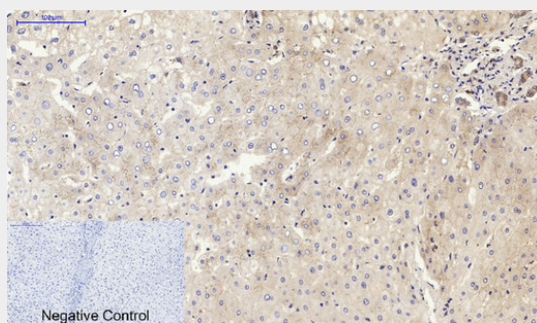
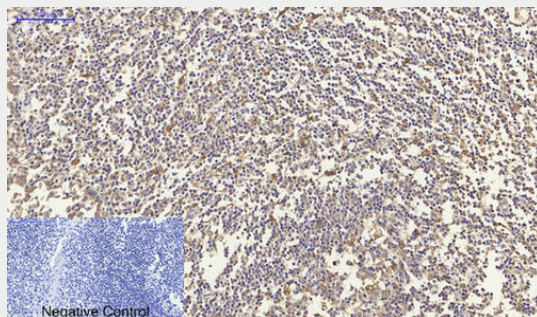
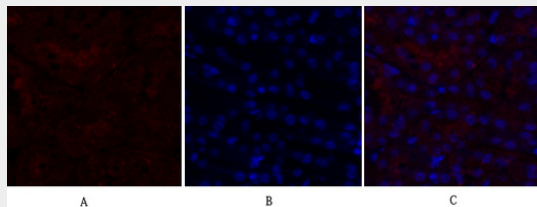
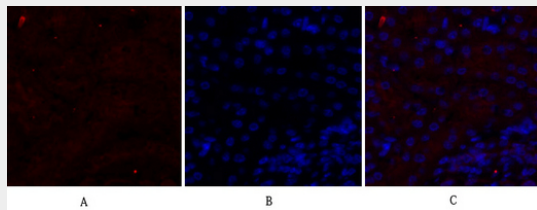
N-cadherin Polyclonal Antibody - Protocols

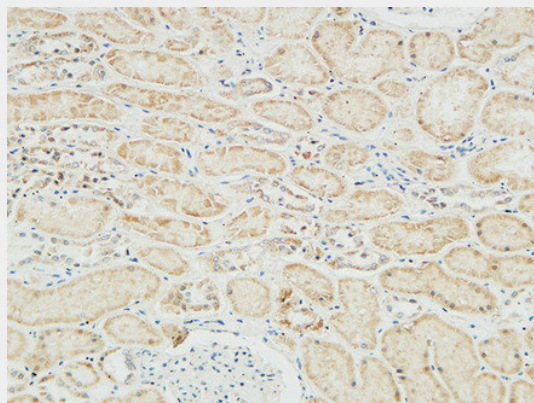
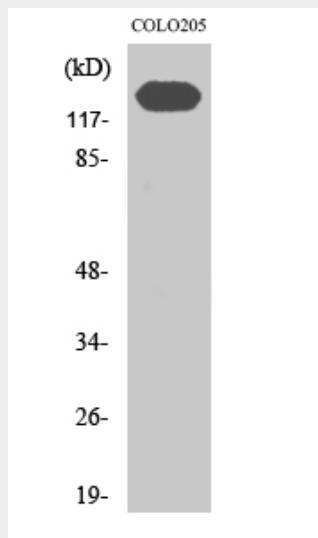
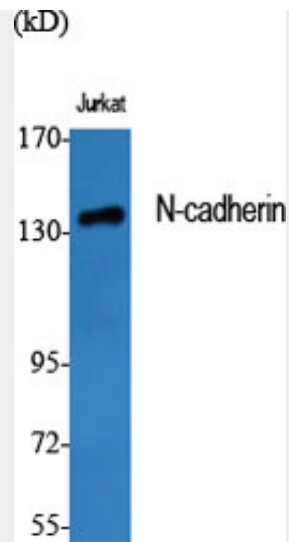
Provided below are standard protocols that you may find useful for product applications.

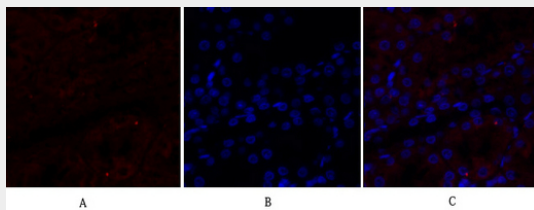
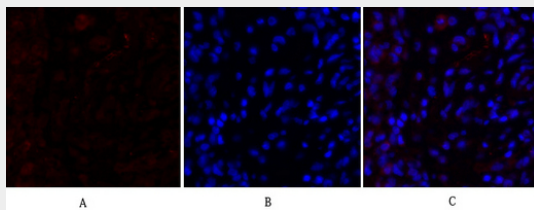
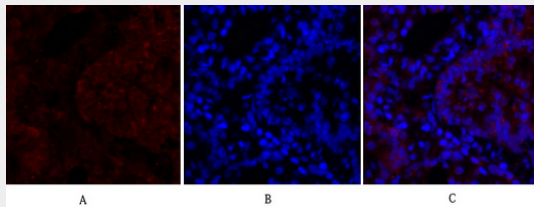
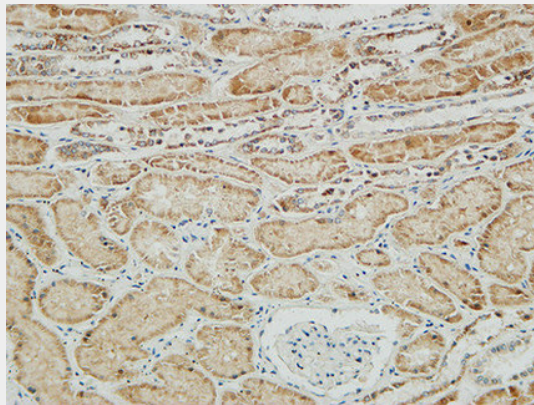
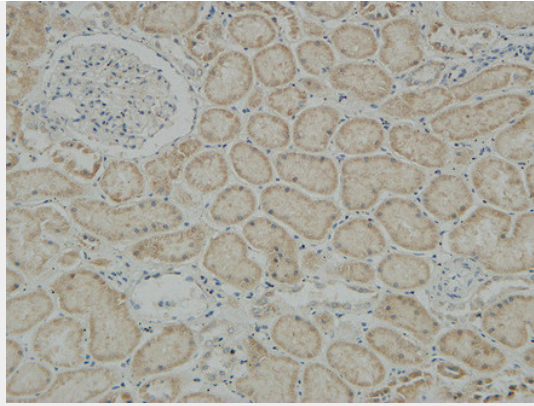
- [Western Blot](#)
- [Blocking Peptides](#)
- [Dot Blot](#)
- [Immunohistochemistry](#)
- [Immunofluorescence](#)
- [Immunoprecipitation](#)
- [Flow Cytometry](#)
- [Cell Culture](#)

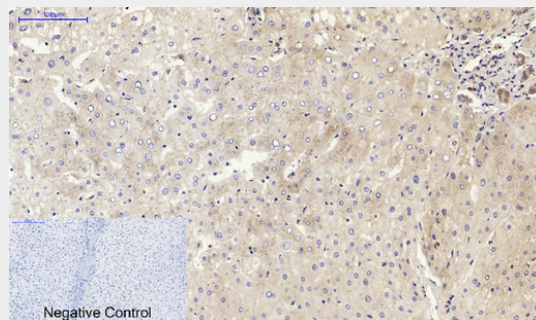
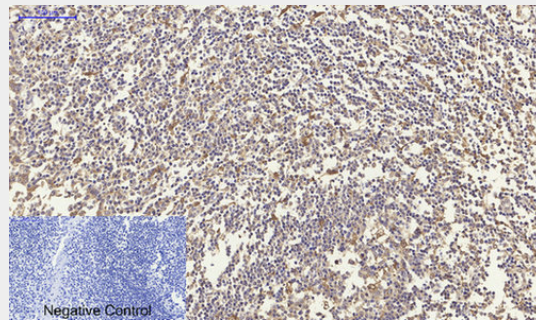
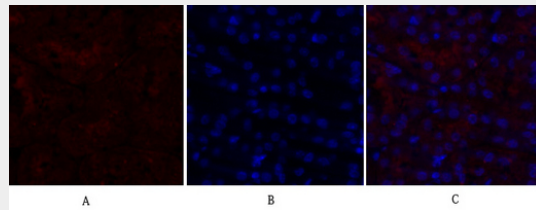
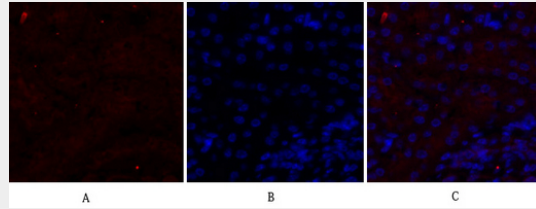
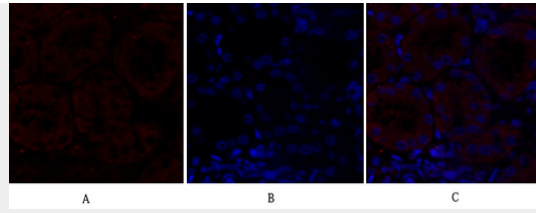
N-cadherin Polyclonal Antibody - Images

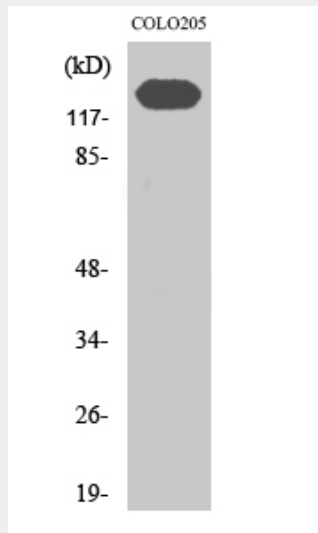
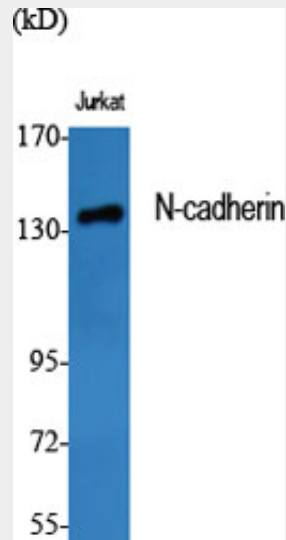
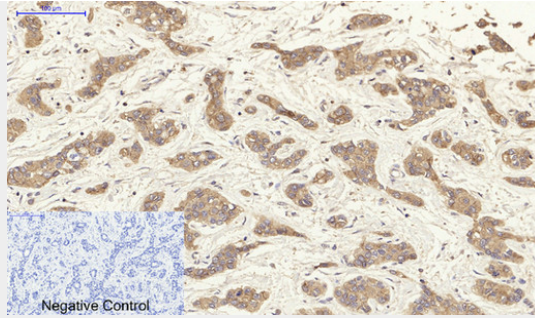


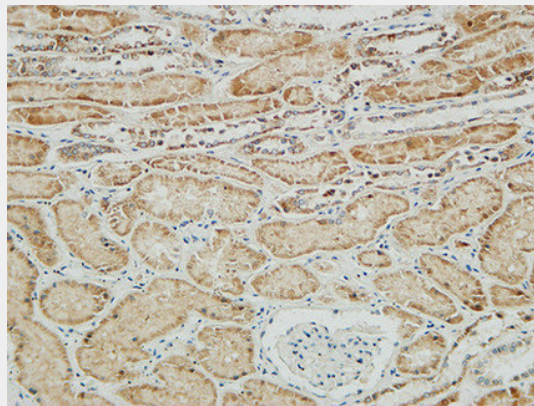
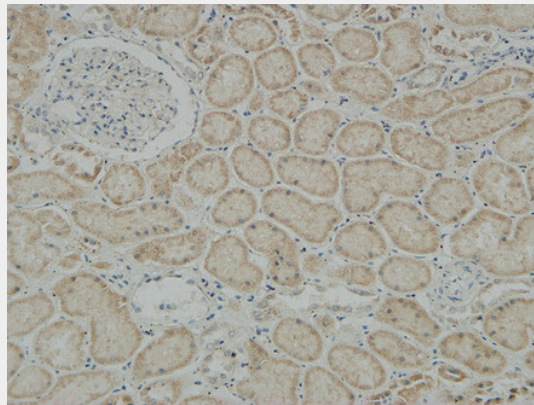
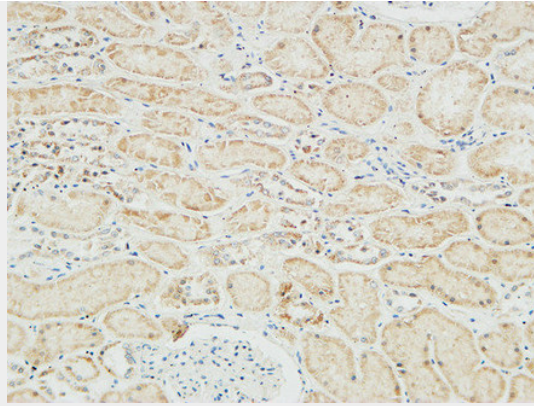












N-cadherin Polyclonal Antibody - Background

Calcium-dependent cell adhesion protein; preferentially mediates homotypic cell-cell adhesion by dimerization with a CDH2 chain from another cell. Cadherins may thus contribute to the sorting of heterogeneous cell types. Acts as a regulator of neural stem cells quiescence by mediating anchorage of neural stem cells to ependymocytes in the adult subependymal zone: upon cleavage by MMP24, CDH2-mediated anchorage is affected, leading to modulate neural stem cell quiescence. CDH2 may be involved in neuronal recognition mechanism. In hippocampal neurons, may regulate dendritic spine density.

N-cadherin Polyclonal Antibody - Citations

- [Eupalinolide A induces autophagy via the ROS/ERK signaling pathway in hepatocellular carcinoma cells](#)

