

**Myt 1 Polyclonal Antibody**  
Catalog # AP71141**Specification****Myt 1 Polyclonal Antibody - Product Information**

Application	WB
Primary Accession	<a href="#">Q99640</a>
Reactivity	Human
Host	Rabbit
Clonality	Polyclonal

**Myt 1 Polyclonal Antibody - Additional Information****Gene ID** 9088**Other Names**

PKMYT1; MYT1; Membrane-associated tyrosine- and threonine-specific cdc2-inhibitory kinase; Myt1 kinase

**Dilution**

WB~~Western Blot: 1/500 - 1/2000. Immunohistochemistry: 1/100 - 1/300. ELISA: 1/20000. Not yet tested in other applications.

**Format**

Liquid in PBS containing 50% glycerol, 0.5% BSA and 0.09% (W/V) sodium azide.

**Storage Conditions**

-20°C

**Myt 1 Polyclonal Antibody - Protein Information****Name** PKMYT1**Synonyms** MYT1**Function**

Acts as a negative regulator of entry into mitosis (G2 to M transition) by phosphorylation of the CDK1 kinase specifically when CDK1 is complexed to cyclins (PubMed:<a href="http://www.uniprot.org/citations/10373560" target="\_blank">10373560</a>, PubMed:<a href="http://www.uniprot.org/citations/10504341" target="\_blank">10504341</a>, PubMed:<a href="http://www.uniprot.org/citations/9001210" target="\_blank">9001210</a>, PubMed:<a href="http://www.uniprot.org/citations/9268380" target="\_blank">9268380</a>). Mediates phosphorylation of CDK1 predominantly on 'Thr-14'. Also involved in Golgi fragmentation (PubMed:<a href="http://www.uniprot.org/citations/9001210" target="\_blank">9001210</a>, PubMed:<a href="http://www.uniprot.org/citations/9268380" target="\_blank">9268380</a>). May be involved in phosphorylation of CDK1 on 'Tyr-15' to a lesser degree, however tyrosine kinase activity is unclear and may be indirect (PubMed:<a href="http://www.uniprot.org/citations/9001210" target="\_blank">9001210</a>, PubMed:<a href="http://www.uniprot.org/citations/9001210" target="\_blank">9001210</a>, PubMed:<a href="http://www.uniprot.org/citations/9001210" target="\_blank">9001210</a>).

href="http://www.uniprot.org/citations/9268380" target="\_blank">9268380</a>).

#### Cellular Location

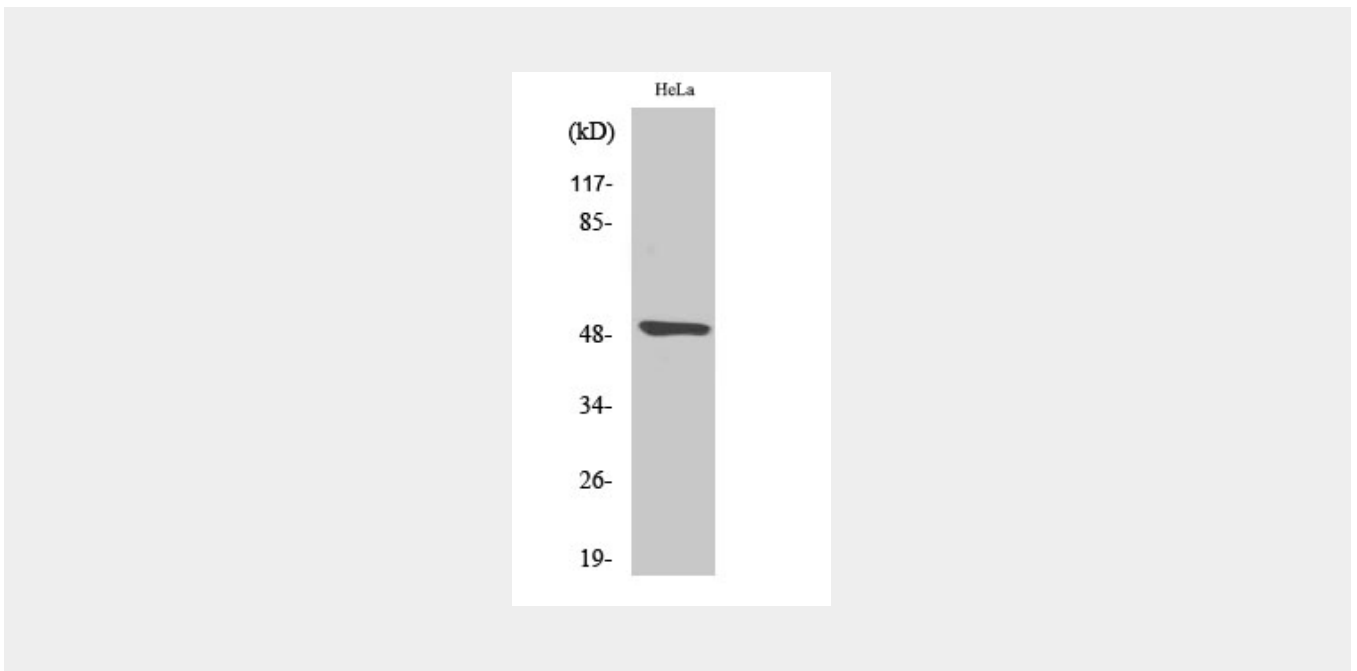
Endoplasmic reticulum membrane; Peripheral membrane protein. Golgi apparatus membrane; Peripheral membrane protein

#### Myt 1 Polyclonal Antibody - Protocols

Provided below are standard protocols that you may find useful for product applications.

- [Western Blot](#)
- [Blocking Peptides](#)
- [Dot Blot](#)
- [Immunohistochemistry](#)
- [Immunofluorescence](#)
- [Immunoprecipitation](#)
- [Flow Cytometry](#)
- [Cell Culture](#)

#### Myt 1 Polyclonal Antibody - Images



#### Myt 1 Polyclonal Antibody - Background

Acts as a negative regulator of entry into mitosis (G2 to M transition) by phosphorylation of the CDK1 kinase specifically when CDK1 is complexed to cyclins. Mediates phosphorylation of CDK1 predominantly on 'Thr-14'. Also involved in Golgi fragmentation. May be involved in phosphorylation of CDK1 on 'Tyr-15' to a lesser degree, however tyrosine kinase activity is unclear and may be indirect. May be a downstream target of Notch signaling pathway during eye development.