

**Mucin 13 Polyclonal Antibody**  
Catalog # AP71104**Specification**

---

**Mucin 13 Polyclonal Antibody - Product Information**

Application	WB
Primary Accession	<a href="#">Q9H3R2</a>
Reactivity	Human
Host	Rabbit
Clonality	Polyclonal

**Mucin 13 Polyclonal Antibody - Additional Information****Gene ID** 56667**Other Names**

MUC13; DRCC1; RECC; Mucin-13; MUC-13; Down-regulated in colon cancer 1

**Dilution**

WB~Western Blot: 1/500 - 1/2000. Immunohistochemistry: 1/100 - 1/300. Immunofluorescence: 1/200 - 1/1000. ELISA: 1/20000. Not yet tested in other applications.

**Format**

Liquid in PBS containing 50% glycerol, 0.5% BSA and 0.09% (W/V) sodium azide.

**Storage Conditions**

-20°C

**Mucin 13 Polyclonal Antibody - Protein Information****Name** MUC13**Synonyms** DRCC1, RECC**Function**

Epithelial and hemopoietic transmembrane mucin that may play a role in cell signaling.

**Cellular Location**

Cell membrane; Single-pass type I membrane protein Apical cell membrane. Secreted. Note=Also exists as a soluble form

**Tissue Location**

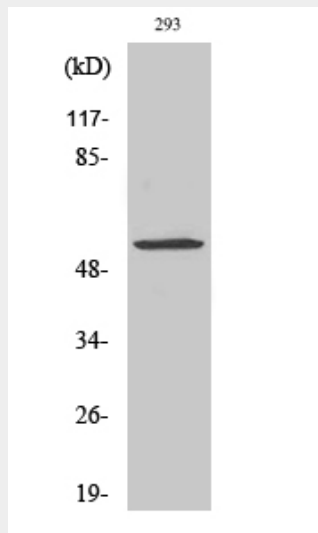
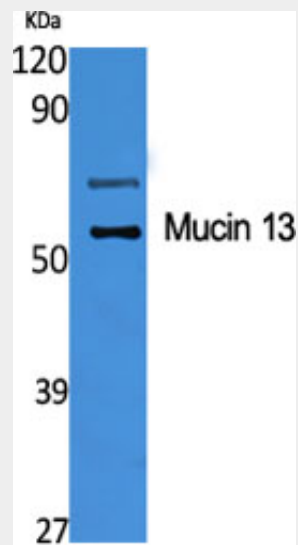
Highly expressed in epithelial tissues, particularly those of the gastrointestinal and respiratory tracts, such as large intestine and trachea, followed by kidney, small intestine, appendix and stomach.

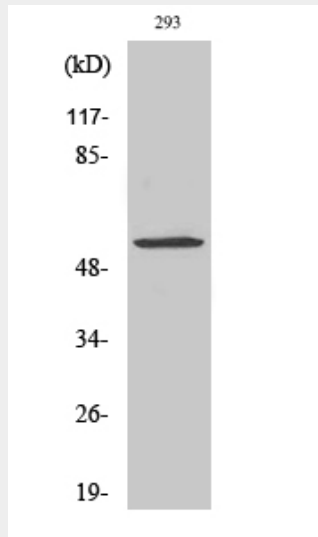
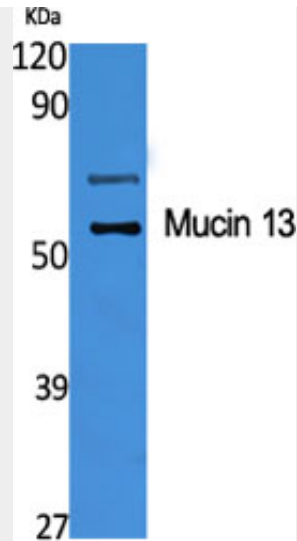
## Mucin 13 Polyclonal Antibody - Protocols

Provided below are standard protocols that you may find useful for product applications.

- [Western Blot](#)
- [Blocking Peptides](#)
- [Dot Blot](#)
- [Immunohistochemistry](#)
- [Immunofluorescence](#)
- [Immunoprecipitation](#)
- [Flow Cytometry](#)
- [Cell Culture](#)

## Mucin 13 Polyclonal Antibody - Images





### Mucin 13 Polyclonal Antibody - Background

Epithelial and hemopoietic transmembrane mucin that may play a role in cell signaling.