

MRP7 Polyclonal Antibody
Catalog # AP71025**Specification****MRP7 Polyclonal Antibody - Product Information**

| | |
|-------------------|------------------------|
| Application | WB |
| Primary Accession | Q5T3U5 |
| Reactivity | Human, Monkey |
| Host | Rabbit |
| Clonality | Polyclonal |

MRP7 Polyclonal Antibody - Additional Information**Gene ID** 89845**Other Names**

ABCC10; MRP7; SIMRP7; Multidrug resistance-associated protein 7; ATP-binding cassette sub-family C member 10

Dilution

WB~~Western Blot: 1/500 - 1/2000. ELISA: 1/40000. Not yet tested in other applications.

Format

Liquid in PBS containing 50% glycerol, 0.5% BSA and 0.09% (W/V) sodium azide.

Storage Conditions

-20°C

MRP7 Polyclonal Antibody - Protein Information**Name** ABCC10**Synonyms** MRP7, SIMRP7**Function**

ATP-dependent transporter of the ATP-binding cassette (ABC) family that actively extrudes physiological compounds, and xenobiotics from cells. Lipophilic anion transporter that mediates ATP-dependent transport of glucuronide conjugates such as estradiol-17-beta-o- glucuronide and GSH conjugates such as leukotriene C4 (LTC4) (PubMed:12527806, PubMed:15256465). May contribute to regulate the transport of organic compounds in testes across the blood-testis- barrier (Probable). Mediates multidrug resistance (MDR) in cancer cells by preventing the intracellular accumulation of certain antitumor drugs, such as, docetaxel and paclitaxel (PubMed:15256465, PubMed:23087055). Does not transport glycocholic acid, taurocholic acid, MTX, folic acid, cAMP, or cGMP (PubMed:12527806).

Cellular Location

Cell membrane; Multi-pass membrane protein {ECO:0000255|PROSITE-ProRule:PRU00441, ECO:0000269|PubMed:12566991, ECO:0000269|PubMed:15256465}. Basolateral cell membrane; Multi-pass membrane protein. Basal cell membrane; Multi-pass membrane protein.
Note=Localized to the basal membrane of Sertoli cells.

Tissue Location

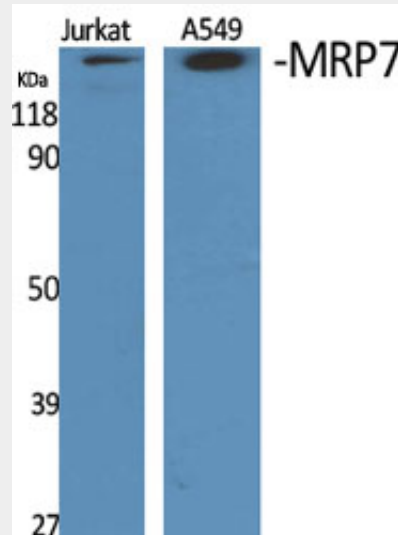
In testis, localized to peritubular myoid cells, Leydig cells, along the basal membrane of Sertoli cells, moderately in the adluminal compartment of the seminiferous tubules, and in vascular endothelial cells. [Isoform 2]: Widely expressed.

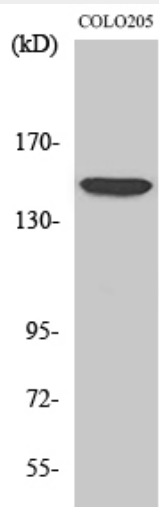
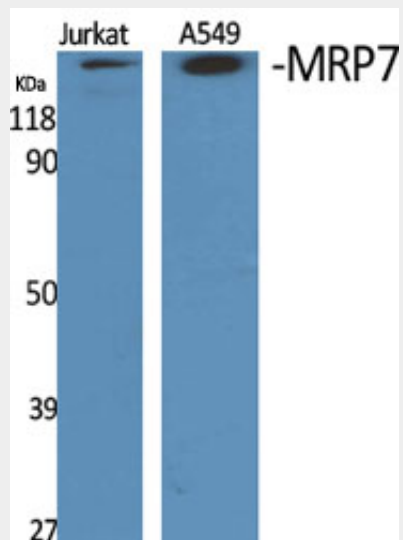
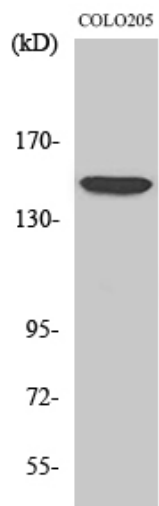
MRP7 Polyclonal Antibody - Protocols

Provided below are standard protocols that you may find useful for product applications.

- [Western Blot](#)
- [Blocking Peptides](#)
- [Dot Blot](#)
- [Immunohistochemistry](#)
- [Immunofluorescence](#)
- [Immunoprecipitation](#)
- [Flow Cytometry](#)
- [Cell Culture](#)

MRP7 Polyclonal Antibody - Images





MRP7 Polyclonal Antibody - Background

ATP-dependent transporter probably involved in cellular detoxification through lipophilic anion extrusion.