

**MRP3 Polyclonal Antibody**  
Catalog # AP71024**Specification**

---

**MRP3 Polyclonal Antibody - Product Information**

Application	<b>WB</b>
Primary Accession	<a href="#">O15438</a>
Reactivity	<b>Human</b>
Host	<b>Rabbit</b>
Clonality	<b>Polyclonal</b>

**MRP3 Polyclonal Antibody - Additional Information****Gene ID** 8714**Other Names**

ABCC3; CMOAT2; MLP2; MRP3; Canalicular multispecific organic anion transporter 2; ATP-binding cassette sub-family C member 3; Multi-specific organic anion transporter D; MOAT-D; Multidrug resistance-associated protein 3

**Dilution**

WB~~Western Blot: 1/500 - 1/2000. ELISA: 1/5000. Not yet tested in other applications.

**Format**

Liquid in PBS containing 50% glycerol, 0.5% BSA and 0.09% (W/V) sodium azide.

**Storage Conditions**

-20°C

**MRP3 Polyclonal Antibody - Protein Information****Name** ABCC3 ([HGNC:54](#))**Synonyms** CMOAT2, MLP2, MRP3**Function**

ATP-dependent transporter of the ATP-binding cassette (ABC) family that binds and hydrolyzes ATP to enable active transport of various substrates including many drugs, toxicants and endogenous compound across cell membranes (PubMed:<a href="http://www.uniprot.org/citations/10359813" target="\_blank">10359813</a>, PubMed:<a href="http://www.uniprot.org/citations/11581266" target="\_blank">11581266</a>, PubMed:<a href="http://www.uniprot.org/citations/15083066" target="\_blank">15083066</a>). Transports glucuronide conjugates such as bilirubin diglucuronide, estradiol-17-beta-o-glucuronide and GSH conjugates such as leukotriene C4 (LTC4) (PubMed:<a href="http://www.uniprot.org/citations/11581266" target="\_blank">11581266</a>, PubMed:<a href="http://www.uniprot.org/citations/15083066" target="\_blank">15083066</a>). Transports also various bile salts (taurocholate, glycocholate, taurochenodeoxycholate-3-sulfate, tauroolithocholate- 3-sulfate) (By similarity). Does not contribute substantially to bile salt physiology but provides an alternative route for the export of bile acids and glucuronides from cholestatic

hepatocytes (By similarity). May contribute to regulate the transport of organic compounds in testes across the blood-testis-barrier (Probable). Can confer resistance to various anticancer drugs, methotrexate, tenoposide and etoposide, by decreasing accumulation of these drugs in cells (PubMed:<a href="http://www.uniprot.org/citations/10359813" target="\_blank">10359813</a>, PubMed:<a href="http://www.uniprot.org/citations/11581266" target="\_blank">11581266</a>).

#### Cellular Location

Basolateral cell membrane; Multi-pass membrane protein. Basal cell membrane; Multi-pass membrane protein. Note=Localized to the basolateral membrane of enterocytes (PubMed:28408210). Localized to the basal membrane of Sertoli cells (PubMed:35307651).

#### Tissue Location

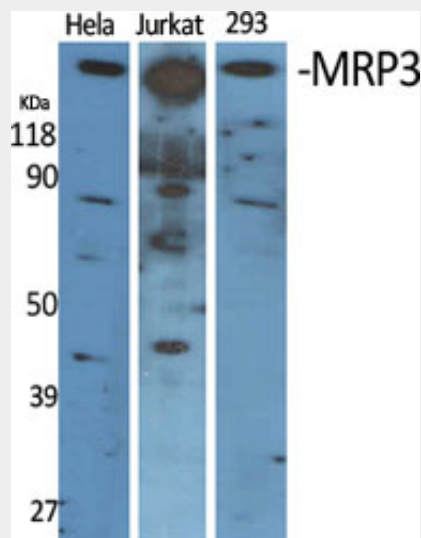
Mainly expressed in the liver. Also expressed in small intestine, colon, prostate, testis, brain and at a lower level in the kidney. In testis, localized to peritubular myoid cells, Leydig cells, along the basal membrane of Sertoli cells and moderately in the adluminal compartment of the seminiferous tubules (PubMed:35307651)

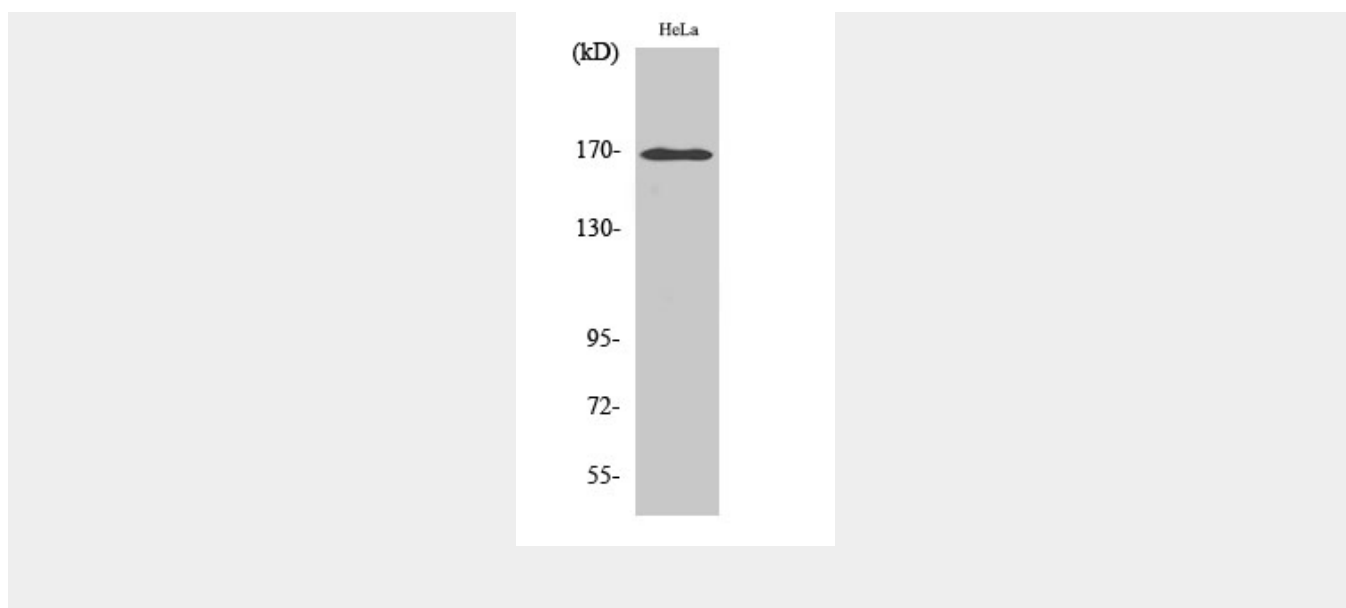
### MRP3 Polyclonal Antibody - Protocols

Provided below are standard protocols that you may find useful for product applications.

- [Western Blot](#)
- [Blocking Peptides](#)
- [Dot Blot](#)
- [Immunohistochemistry](#)
- [Immunofluorescence](#)
- [Immunoprecipitation](#)
- [Flow Cytometry](#)
- [Cell Culture](#)

### MRP3 Polyclonal Antibody - Images





### MRP3 Polyclonal Antibody - Background

May act as an inducible transporter in the biliary and intestinal excretion of organic anions. Acts as an alternative route for the export of bile acids and glucuronides from cholestatic hepatocytes (By similarity).