

MRP2 Polyclonal Antibody
Catalog # AP71023**Specification****MRP2 Polyclonal Antibody - Product Information**

Application	WB
Primary Accession	Q92887
Reactivity	Human
Host	Rabbit
Clonality	Polyclonal

MRP2 Polyclonal Antibody - Additional Information**Gene ID** 1244**Other Names**

ABCC2; CMOAT; CMOAT1; CMRP; MRP2; Canalicular multispecific organic anion transporter 1; ATP-binding cassette sub-family C member 2; Canalicular multidrug resistance protein; Multidrug resistance-associated protein 2

Dilution

WB~~Western Blot: 1/500 - 1/2000. ELISA: 1/10000. Not yet tested in other applications.

Format

Liquid in PBS containing 50% glycerol, 0.5% BSA and 0.09% (W/V) sodium azide.

Storage Conditions

-20°C

MRP2 Polyclonal Antibody - Protein Information**Name** ABCC2 ([HGNC:53](#))**Function**

ATP-dependent transporter of the ATP-binding cassette (ABC) family that binds and hydrolyzes ATP to enable active transport of various substrates including many drugs, toxicants and endogenous compound across cell membranes. Transports a wide variety of conjugated organic anions such as sulfate-, glucuronide- and glutathione (GSH)- conjugates of endo- and xenobiotics substrates (PubMed:[10220572](http://www.uniprot.org/citations/10220572), PubMed:[10421658](http://www.uniprot.org/citations/10421658), PubMed:[11500505](http://www.uniprot.org/citations/11500505), PubMed:[16332456](http://www.uniprot.org/citations/16332456)). Mediates hepatobiliary excretion of mono- and bis-glucuronidated bilirubin molecules and therefore play an important role in bilirubin detoxification (PubMed:[10421658](http://www.uniprot.org/citations/10421658)). Mediates also hepatobiliary excretion of others glucuronide conjugates such as 17beta-estradiol 17-glucosiduronic acid and leukotriene C4 (PubMed:[11500505](http://www.uniprot.org/citations/11500505)). Transports

sulfated bile salt such as tauroolithocholate sulfate (PubMed:16332456). Transports various anticancer drugs, such as anthracycline, vinca alkaloid and methotrexate and HIV-drugs such as protease inhibitors (PubMed:10220572, PubMed:11500505, PubMed:12441801). Confers resistance to several anti-cancer drugs including cisplatin, doxorubicin, epirubicin, methotrexate, etoposide and vincristine (PubMed:10220572, PubMed:11500505).

Cellular Location

Apical cell membrane; Multi-pass membrane protein. Note=Localized to the apical membrane of enterocytes

Tissue Location

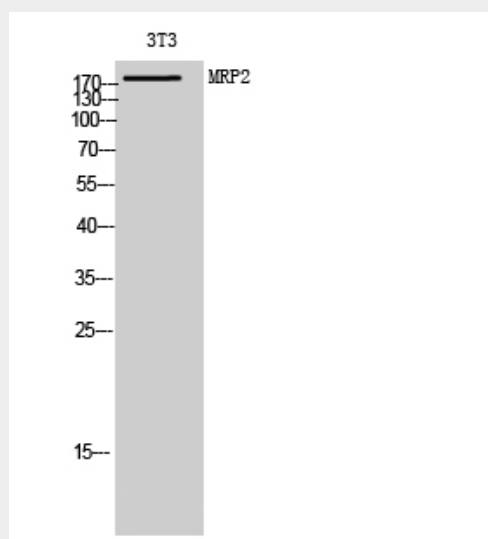
Expressed by polarized cells in liver, kidney and intestine. The highest expression is found in liver. Expressed in small intestine (PubMed:28408210).

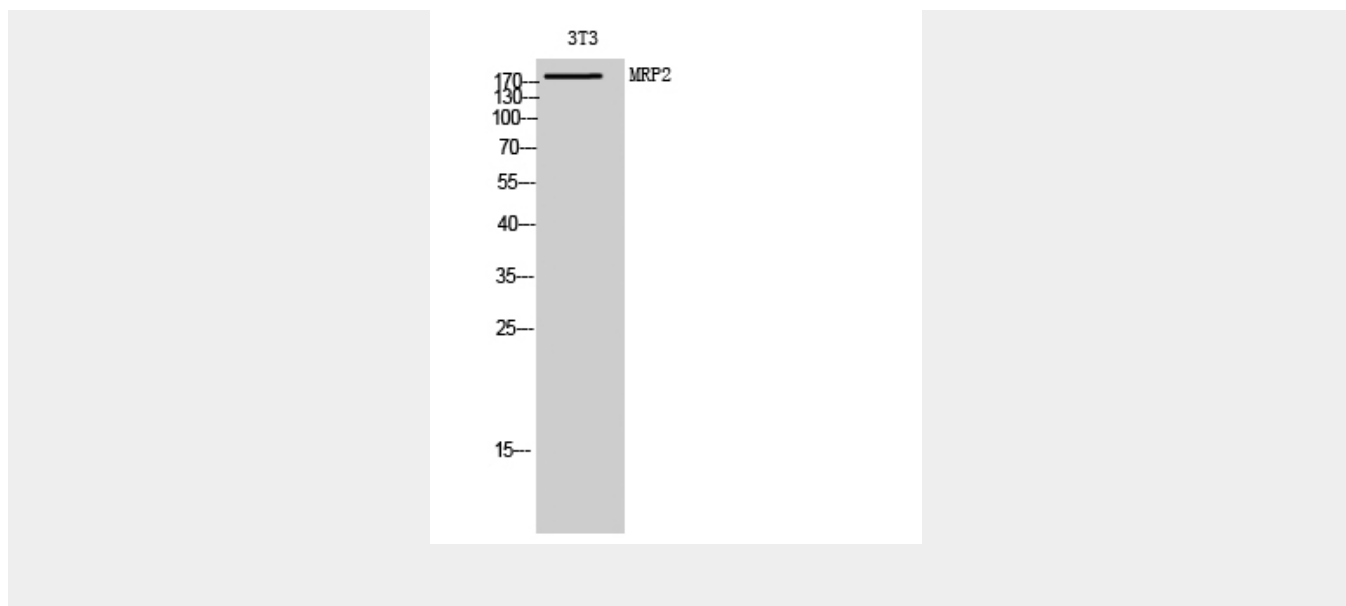
MRP2 Polyclonal Antibody - Protocols

Provided below are standard protocols that you may find useful for product applications.

- [Western Blot](#)
- [Blocking Peptides](#)
- [Dot Blot](#)
- [Immunohistochemistry](#)
- [Immunofluorescence](#)
- [Immunoprecipitation](#)
- [Flow Cytometry](#)
- [Cell Culture](#)

MRP2 Polyclonal Antibody - Images





MRP2 Polyclonal Antibody - Background

Mediates hepatobiliary excretion of numerous organic anions. May function as a cellular cisplatin transporter.