

**mPR $\alpha$  Polyclonal Antibody**  
Catalog # AP71008**Specification****mPR $\alpha$  Polyclonal Antibody - Product Information**

Application	WB
Primary Accession	<a href="#">Q86WK9</a>
Reactivity	Human
Host	Rabbit
Clonality	Polyclonal

**mPR $\alpha$  Polyclonal Antibody - Additional Information****Gene ID** 164091**Other Names**

PAQR7; MRPA; Membrane progesterin receptor alpha; mPR alpha; Progesterin and adipoQ receptor family member 7; Progesterin and adipoQ receptor family member VII

**Dilution**

WB~~Western Blot: 1/500 - 1/2000. Immunofluorescence: 1/200 - 1/1000. ELISA: 1/5000. Not yet tested in other applications.

**Format**

Liquid in PBS containing 50% glycerol, 0.5% BSA and 0.09% (W/V) sodium azide.

**Storage Conditions**

-20°C

**mPR $\alpha$  Polyclonal Antibody - Protein Information****Name** PAQR7 ([HGNC:23146](#))**Synonyms** MRPA**Function**

Plasma membrane progesterone (P4) receptor coupled to G proteins (PubMed:[23763432](http://www.uniprot.org/citations/23763432)). Seems to act through a G(i) mediated pathway (PubMed:[23763432](http://www.uniprot.org/citations/23763432)). May be involved in oocyte maturation (PubMed:[12601167](http://www.uniprot.org/citations/12601167)). Involved in neurosteroid inhibition of apoptosis (PubMed:[23161870](http://www.uniprot.org/citations/23161870)). Also binds dehydroepiandrosterone (DHEA), pregnanolone, pregnenolone and allopregnanolone (PubMed:[23161870](http://www.uniprot.org/citations/23161870)).

**Cellular Location**

Cell membrane; Multi-pass membrane protein

### Tissue Location

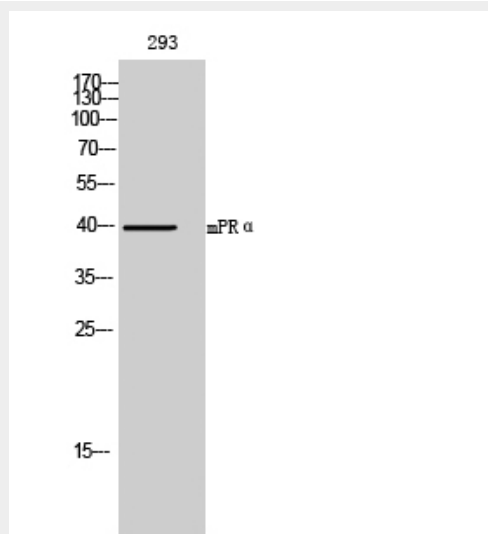
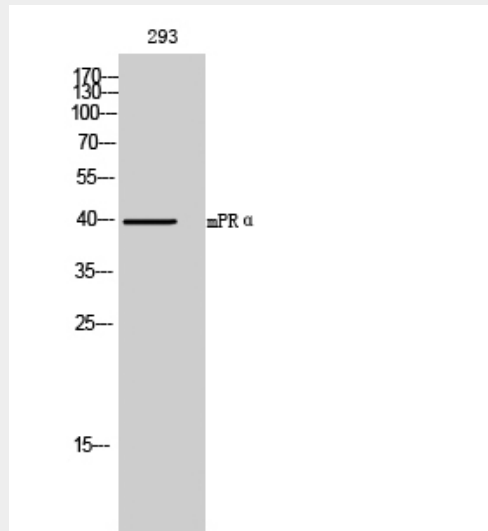
Expressed in a wide range of tissues including ovary, testis, placenta, uterus and bladder

### mPR $\alpha$ Polyclonal Antibody - Protocols

Provided below are standard protocols that you may find useful for product applications.

- [Western Blot](#)
- [Blocking Peptides](#)
- [Dot Blot](#)
- [Immunohistochemistry](#)
- [Immunofluorescence](#)
- [Immunoprecipitation](#)
- [Flow Cytometry](#)
- [Cell Culture](#)

### mPR $\alpha$ Polyclonal Antibody - Images



**mPR $\alpha$  Polyclonal Antibody - Background**

Plasma membrane progesterone (P4) receptor coupled to G proteins (PubMed:23763432). Seems to act through a G(i) mediated pathway (PubMed:23763432). May be involved in oocyte maturation (PubMed:12601167). Involved in neurosteroid inhibition of apoptosis (PubMed:23161870). Also binds dehydroepiandrosterone (DHEA), pregnanolone, pregnenolone and allopregnanolone (PubMed:23161870).