

MMP-8 Polyclonal Antibody
Catalog # AP70983**Specification**

MMP-8 Polyclonal Antibody - Product Information

Application	WB
Primary Accession	P22894
Reactivity	Human, Mouse, Rat
Host	Rabbit
Clonality	Polyclonal

MMP-8 Polyclonal Antibody - Additional Information**Gene ID** 4317**Other Names**

MMP8; CLG1; Neutrophil collagenase; Matrix metalloproteinase-8; MMP-8; PMNL collagenase; PMNL-CL

Dilution

WB~~Western Blot: 1/500 - 1/2000. Immunohistochemistry: 1/100 - 1/300. ELISA: 1/20000. Not yet tested in other applications.

Format

Liquid in PBS containing 50% glycerol, 0.5% BSA and 0.09% (W/V) sodium azide.

Storage Conditions

-20°C

MMP-8 Polyclonal Antibody - Protein Information**Name** MMP8**Synonyms** CLG1**Function**

Can degrade fibrillar type I, II, and III collagens.

Cellular Location

Cytoplasmic granule. Secreted, extracellular space, extracellular matrix. Note=Stored in intracellular granules

Tissue Location

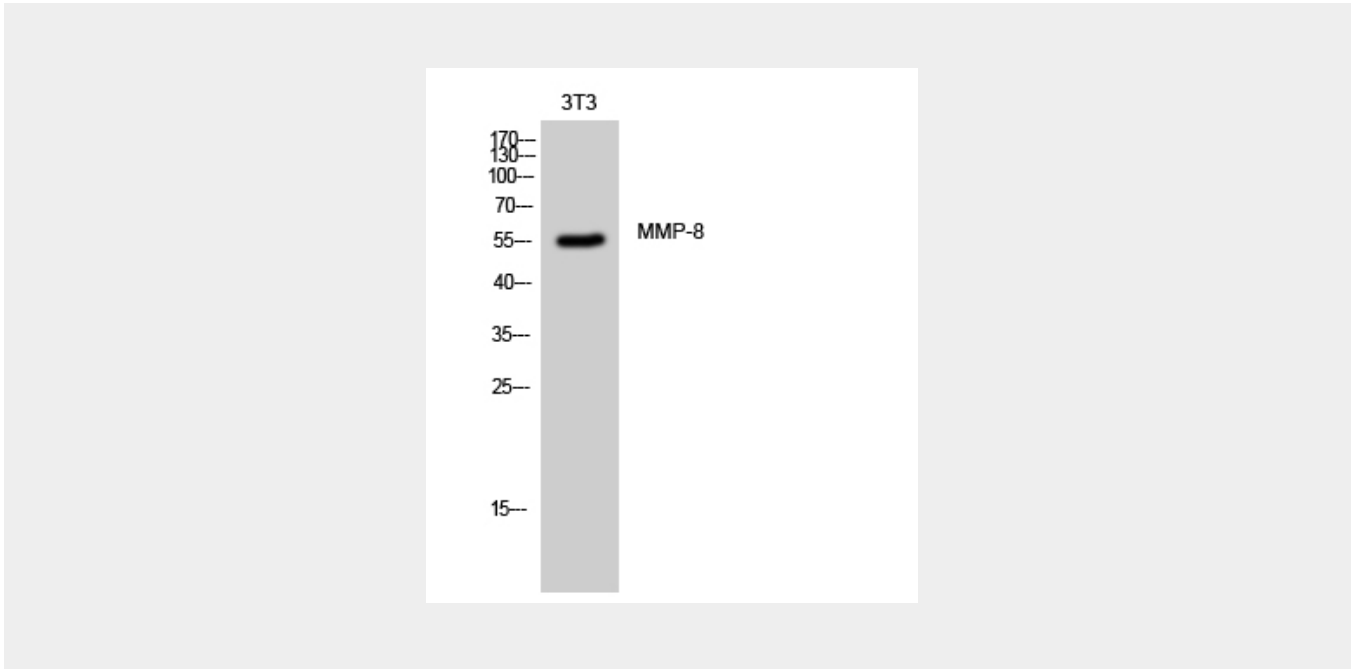
Neutrophils.

MMP-8 Polyclonal Antibody - Protocols

Provided below are standard protocols that you may find useful for product applications.

- [Western Blot](#)
- [Blocking Peptides](#)
- [Dot Blot](#)
- [Immunohistochemistry](#)
- [Immunofluorescence](#)
- [Immunoprecipitation](#)
- [Flow Cytometry](#)
- [Cell Culture](#)

MMP-8 Polyclonal Antibody - Images



MMP-8 Polyclonal Antibody - Background

Can degrade fibrillar type I, II, and III collagens.