

**MMP-11 Polyclonal Antibody**  
Catalog # AP70977**Specification**

---

**MMP-11 Polyclonal Antibody - Product Information**

Application	WB
Primary Accession	<a href="#">P24347</a>
Reactivity	Human, Mouse, Rat
Host	Rabbit
Clonality	Polyclonal

**MMP-11 Polyclonal Antibody - Additional Information****Gene ID** 4320**Other Names**

MMP11; STMY3; Stromelysin-3; SL-3; ST3; Matrix metalloproteinase-11; MMP-11

**Dilution**

WB~~Western Blot: 1/500 - 1/2000. Immunohistochemistry: 1/100 - 1/300. Immunofluorescence: 1/200 - 1/1000. ELISA: 1/20000. Not yet tested in other applications.

**Format**

Liquid in PBS containing 50% glycerol, 0.5% BSA and 0.09% (W/V) sodium azide.

**Storage Conditions**

-20°C

**MMP-11 Polyclonal Antibody - Protein Information****Name** MMP11**Synonyms** STMY3**Function**

May play an important role in the progression of epithelial malignancies.

**Cellular Location**

Secreted, extracellular space, extracellular matrix

**Tissue Location**

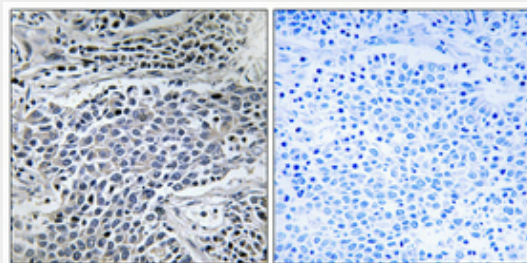
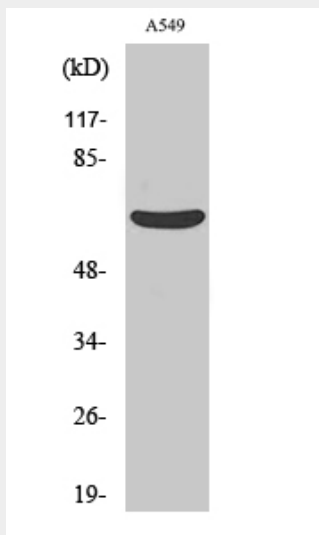
Specifically expressed in stromal cells of breast carcinomas

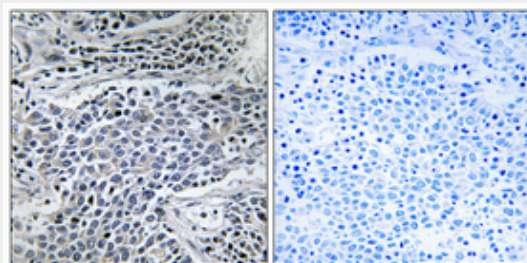
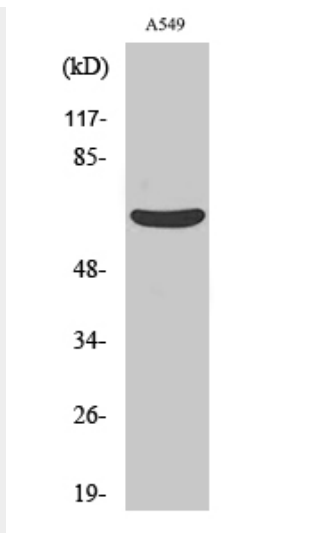
**MMP-11 Polyclonal Antibody - Protocols**

Provided below are standard protocols that you may find useful for product applications.

- [Western Blot](#)
- [Blocking Peptides](#)
- [Dot Blot](#)
- [Immunohistochemistry](#)
- [Immunofluorescence](#)
- [Immunoprecipitation](#)
- [Flow Cytometry](#)
- [Cell Culture](#)

### MMP-11 Polyclonal Antibody - Images





### **MMP-11 Polyclonal Antibody - Background**

May play an important role in the progression of epithelial malignancies.