

**Mlx Polyclonal Antibody**  
Catalog # AP70974

**Specification**

---

**Mlx Polyclonal Antibody - Product Information**

Application	WB
Primary Accession	<a href="#">Q9UH92</a>
Reactivity	Human, Mouse, Rat
Host	Rabbit
Clonality	Polyclonal

**Mlx Polyclonal Antibody - Additional Information**

**Gene ID** 6945

**Other Names**

MLX; BHLHD13; TCFL4; Max-like protein X; Class D basic helix-loop-helix protein 13; bHLHD13; Max-like bHLHZip protein; Protein BigMax; Transcription factor-like protein 4

**Dilution**

WB~~Western Blot: 1/500 - 1/2000. Immunohistochemistry: 1/100 - 1/300. ELISA: 1/10000. Not yet tested in other applications.

**Format**

Liquid in PBS containing 50% glycerol, 0.5% BSA and 0.09% (W/V) sodium azide.

**Storage Conditions**

-20°C

**Mlx Polyclonal Antibody - Protein Information**

**Name** MLX

**Synonyms** BHLHD13, TCFL4

**Function**

Transcription regulator. Forms a sequence-specific DNA- binding protein complex with MAD1, MAD4, MNT, WBSCR14 and MLXIP which recognizes the core sequence 5'-CACGTG-3'. The TCFL4-MAD1, TCFL4-MAD4, TCFL4-WBSCR14 complexes are transcriptional repressors. Plays a role in transcriptional activation of glycolytic target genes. Involved in glucose-responsive gene regulation.

**Cellular Location**

[Isoform Alpha]: Cytoplasm. Note=Found predominantly in the cytoplasm (PubMed:10918583).  
[Isoform Gamma]: Nucleus. Note=Found predominantly in the nucleus (PubMed:10918583).

**Tissue Location**

Expressed in all tissues tested, including spleen, thymus, prostate, ovary, intestine, colon,

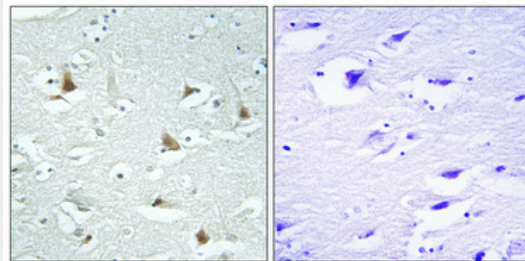
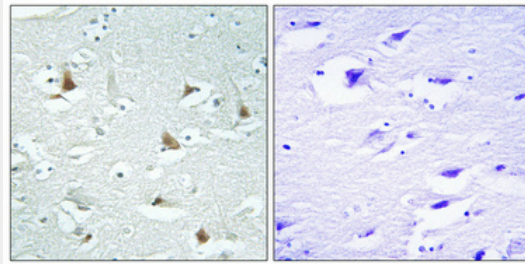
peripheral blood leukocyte, heart, liver, skeletal muscle and kidney. Lower levels of expression in testis, brain, placenta and lung.

### Mix Polyclonal Antibody - Protocols

Provided below are standard protocols that you may find useful for product applications.

- [Western Blot](#)
- [Blocking Peptides](#)
- [Dot Blot](#)
- [Immunohistochemistry](#)
- [Immunofluorescence](#)
- [Immunoprecipitation](#)
- [Flow Cytometry](#)
- [Cell Culture](#)

### Mix Polyclonal Antibody - Images



### Mix Polyclonal Antibody - Background

Transcription regulator. Forms a sequence-specific DNA-binding protein complex with MAD1, MAD4, MNT, WBSCR14 and MLXIP which recognizes the core sequence 5'-CACGTG-3'. The TCFL4-MAD1, TCFL4-MAD4, TCFL4-WBSCR14 complexes are transcriptional repressors. Plays a role in transcriptional activation of glycolytic target genes. Involved in glucose-responsive gene regulation.