

PGK1 Antibody (Center)
Purified Rabbit Polyclonal Antibody (Pab)
Catalog # AP7094b

Specification

PGK1 Antibody (Center) - Product Information

Application	IF, WB, IHC-P, FC,E
Primary Accession	P00558
Other Accession	P16617 , P09411 , Q60HD8 , P00559
Reactivity	Human
Predicted	Horse, Monkey, Mouse, Rat
Host	Rabbit
Clonality	Polyclonal
Isotype	Rabbit IgG
Antigen Region	117-145

PGK1 Antibody (Center) - Additional Information

Gene ID 5230

Other Names

Phosphoglycerate kinase 1, Cell migration-inducing gene 10 protein, Primer recognition protein 2, PRP 2, PGK1, PGKA

Target/Specificity

This PGK1 antibody is generated from rabbits immunized with a KLH conjugated synthetic peptide between 117-145 amino acids from the Central region of human PGK1.

Dilution

IF~~1:10~50
WB~~1:1000
IHC-P~~1:100
FC~~1:10~50

Format

Purified polyclonal antibody supplied in PBS with 0.09% (W/V) sodium azide. This antibody is prepared by Saturated Ammonium Sulfate (SAS) precipitation followed by dialysis against PBS.

Storage

Maintain refrigerated at 2-8°C for up to 2 weeks. For long term storage store at -20°C in small aliquots to prevent freeze-thaw cycles.

Precautions

PGK1 Antibody (Center) is for research use only and not for use in diagnostic or therapeutic procedures.

PGK1 Antibody (Center) - Protein Information

Name PGK1

Synonyms PGKA

Function Catalyzes one of the two ATP producing reactions in the glycolytic pathway via the reversible conversion of 1,3- diphosphoglycerate to 3-phosphoglycerate (PubMed:[30323285](#), PubMed:[7391028](#)). In addition to its role as a glycolytic enzyme, it seems that PGK-1 acts as a polymerase alpha cofactor protein (primer recognition protein) (PubMed:[2324090](#)). May play a role in sperm motility (PubMed:[26677959](#)).

Cellular Location

Cytoplasm.

Tissue Location

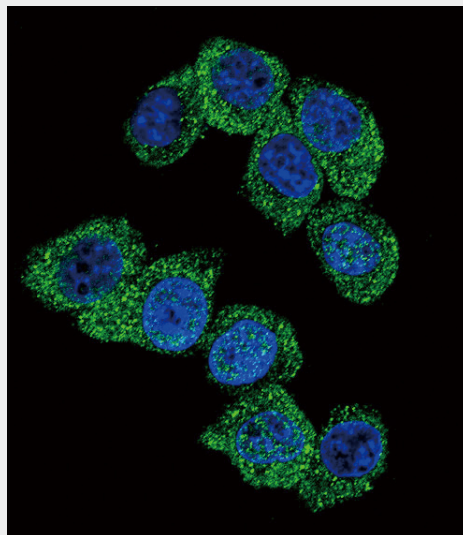
Mainly expressed in spermatogonia. Localized on the principle piece in the sperm (at protein level). Expression significantly decreased in the testis of elderly men

PGK1 Antibody (Center) - Protocols

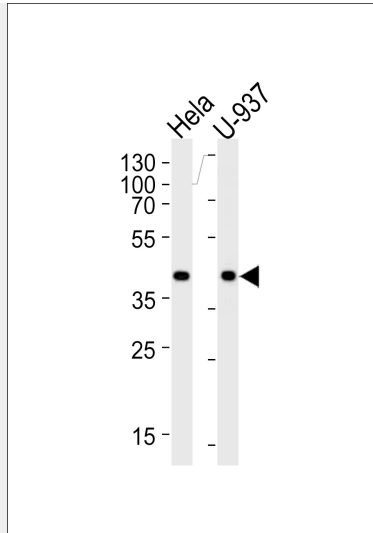
Provided below are standard protocols that you may find useful for product applications.

- [Western Blot](#)
- [Blocking Peptides](#)
- [Dot Blot](#)
- [Immunohistochemistry](#)
- [Immunofluorescence](#)
- [Immunoprecipitation](#)
- [Flow Cytometry](#)
- [Cell Culture](#)

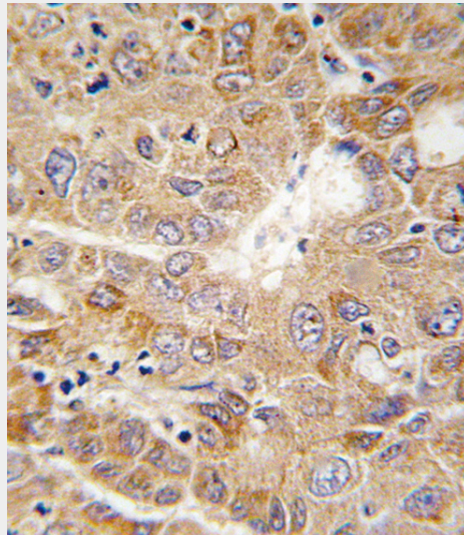
PGK1 Antibody (Center) - Images



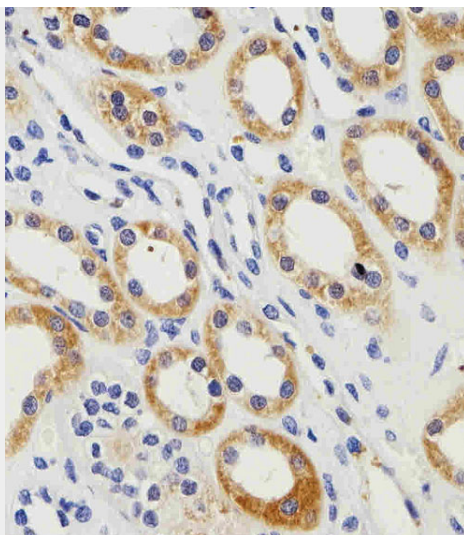
Confocal immunofluorescent analysis of PGK1 Antibody (Center)(Cat#AP7094b) with HeLa cell followed by Alexa Fluor 488-conjugated goat anti-rabbit IgG (green).DAPI was used to stain the cell nuclear (blue).



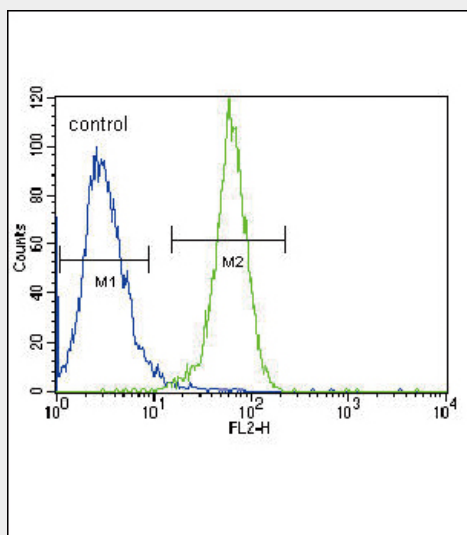
Western blot analysis of lysates from HeLa, U-937 cell line (from left to right), using PGK1 Antibody (G132)(Cat. #AP7094b). AP7094b was diluted at 1:1000 at each lane. A goat anti-rabbit IgG H&L(HRP) at 1:5000 dilution was used as the secondary antibody. Lysates at 35ug per lane.



Formalin-fixed and paraffin-embedded human hepatocarcinoma tissue reacted with PGK1 antibody (Center), which was peroxidase-conjugated to the secondary antibody, followed by DAB staining. This data demonstrates the use of this antibody for immunohistochemistry; clinical relevance has not been evaluated.



Immunohistochemical analysis of paraffin-embedded H. kidney section using PGK1 Antibody (Center)(Cat#AP7094b). AP7094b was diluted at 1:100 dilution. A peroxidase-conjugated goat anti-rabbit IgG at 1:400 dilution was used as the secondary antibody, followed by DAB staining.



PGK1 Antibody (Center) (Cat. #AP7094b) flow cytometric analysis of Hela cells (right histogram) compared to a negative control cell (left histogram). FITC-conjugated goat-anti-rabbit secondary antibodies were used for the analysis.

PGK1 Antibody (Center) - Background

Also known as ATP:3-phosphoglycerate 1-phosphotransferase (EC 2.7.2.3), this major enzyme in glycolysis catalyzes the reversible conversion of 1,3-diphosphoglycerate to 3-phosphoglycerate, generating one molecule of ATP. New blood vessel formation or angiogenesis is critical for tumor expansion and metastasis. Lay et al. (2000) showed that the plasmin reductase isolated from conditioned medium of fibrosarcoma cells is the glycolytic enzyme phosphoglycerate kinase. They concluded that phosphoglycerate kinase not only functions in glycolysis but is secreted by tumor cells and participates in the angiogenic process as a disulfide reductase.

PGK1 Antibody (Center) - References

Lay, A. J., et al. Nature 408: 869-873 (2000).

PGK1 Antibody (Center) - Citations

- [O-GlcNAcylation of PGK1 coordinates glycolysis and TCA cycle to promote tumor growth](#)
- [The effect of 3-bromopyruvate on human colorectal cancer cells is dependent on glucose concentration but not hexokinase II expression](#).
- [Antrodia cinnamomea Inhibits Migration in Human Hepatocellular Carcinoma Cells](#).
- [Cigarette smoking exposure alters pebp1 DNA methylation and protein profile involved in MAPK signaling pathway in mice testis](#).
- [Phosphoglycerate kinase 2 \(PGK2\) is essential for sperm function and male fertility in mice](#).
- [Opposite pathobiochemical fate of pyruvate kinase and adenylate kinase in aged rat skeletal muscle as revealed by proteomic DIGE analysis](#).
- [Proteomic profiling reveals a severely perturbed protein expression pattern in aged skeletal muscle](#).
- [Role of hypoxia inducible factor-1 alpha in modulation of apoptosis resistance](#).
- [Parkinson's disease-associated mutations in leucine-rich repeat kinase 2 augment kinase activity](#).