

**MC1-R Polyclonal Antibody**  
Catalog # AP70856**Specification****MC1-R Polyclonal Antibody - Product Information**

Application	<b>WB</b>
Primary Accession	<a href="#">Q01726</a>
Reactivity	<b>Human</b>
Host	<b>Rabbit</b>
Clonality	<b>Polyclonal</b>

**MC1-R Polyclonal Antibody - Additional Information****Gene ID** 4157**Other Names**

MC1R; MSHR; Melanocyte-stimulating hormone receptor; MSH-R; Melanocortin receptor 1; MC1-R

**Dilution**

WB~~Western Blot: 1/500 - 1/2000. Immunofluorescence: 1/200 - 1/1000. ELISA: 1/5000. Not yet tested in other applications.

**Format**

Liquid in PBS containing 50% glycerol, 0.5% BSA and 0.09% (W/V) sodium azide.

**Storage Conditions**

-20°C

**MC1-R Polyclonal Antibody - Protein Information****Name** MC1R**Synonyms** MSHR**Function**

Receptor for MSH (alpha, beta and gamma) and ACTH (PubMed:[11442765](http://www.uniprot.org/citations/11442765), PubMed:[11707265](http://www.uniprot.org/citations/11707265), PubMed:[1325670](http://www.uniprot.org/citations/1325670), PubMed:[1516719](http://www.uniprot.org/citations/1516719), PubMed:[8463333](http://www.uniprot.org/citations/8463333)). The activity of this receptor is mediated by G proteins which activate adenylate cyclase (PubMed:[11707265](http://www.uniprot.org/citations/11707265), PubMed:[1325670](http://www.uniprot.org/citations/1325670), PubMed:[16463023](http://www.uniprot.org/citations/16463023), PubMed:[19737927](http://www.uniprot.org/citations/19737927)). Mediates melanogenesis, the production of eumelanin (black/brown) and phaeomelanin (red/yellow), via regulation of cAMP signaling in melanocytes (PubMed:[19737927](http://www.uniprot.org/citations/19737927)).

<http://www.uniprot.org/citations/31097585>

#### Cellular Location

Cell membrane; Multi-pass membrane protein

#### Tissue Location

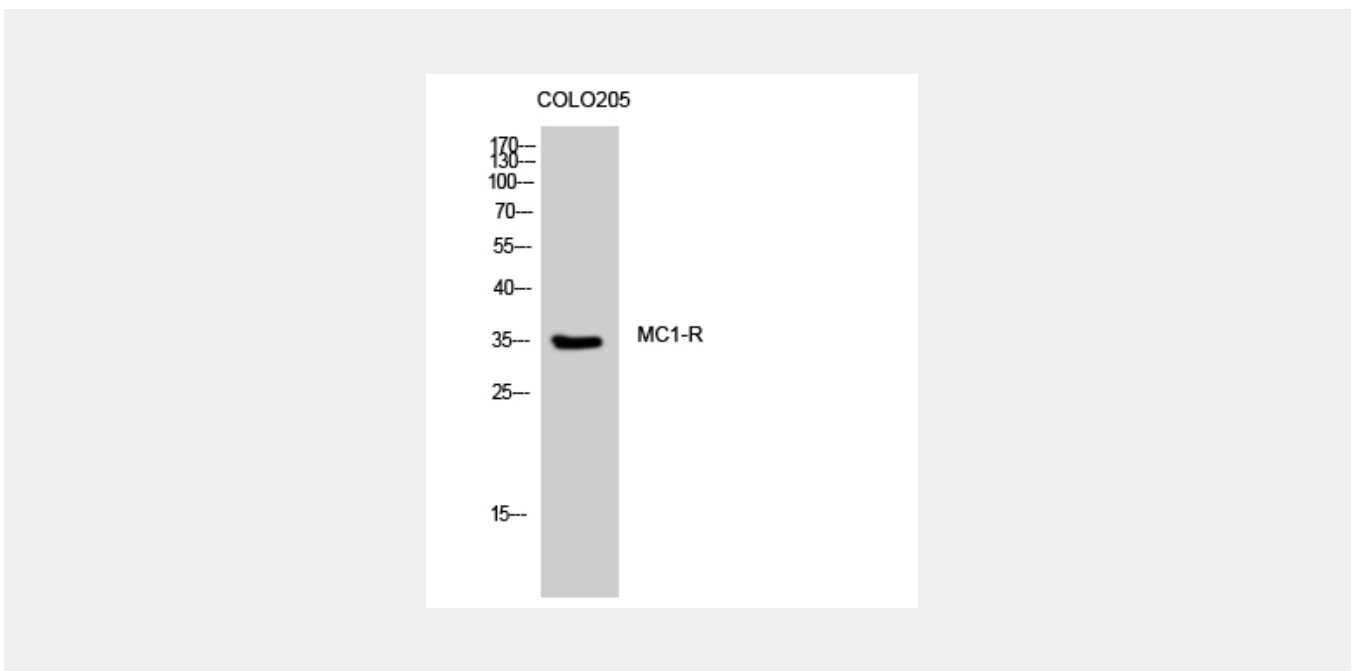
Expressed in melanocytes (PubMed:1325670, PubMed:31097585). Expressed in corticoadrenal tissue (PubMed:1325670)

### MC1-R Polyclonal Antibody - Protocols

Provided below are standard protocols that you may find useful for product applications.

- [Western Blot](#)
- [Blocking Peptides](#)
- [Dot Blot](#)
- [Immunohistochemistry](#)
- [Immunofluorescence](#)
- [Immunoprecipitation](#)
- [Flow Cytometry](#)
- [Cell Culture](#)

### MC1-R Polyclonal Antibody - Images



### MC1-R Polyclonal Antibody - Background

Receptor for MSH (alpha, beta and gamma) and ACTH. The activity of this receptor is mediated by G proteins which activate adenylate cyclase.