

**Mammaglobin B Polyclonal Antibody**  
Catalog # AP70815**Specification**

---

**Mammaglobin B Polyclonal Antibody - Product Information**

Application	WB
Primary Accession	<a href="#">O75556</a>
Reactivity	Human
Host	Rabbit
Clonality	Polyclonal

**Mammaglobin B Polyclonal Antibody - Additional Information****Gene ID** 4246**Other Names**

SCGB2A1; LIPHC; MGB2; UGB3; Mammaglobin-B; Lacryglobin; Lipophilin-C; Mammaglobin-2; Secretoglobin family 2A member 1

**Dilution**

WB~~Western Blot: 1/500 - 1/2000. Immunohistochemistry: 1/100 - 1/300. Immunofluorescence: 1/200 - 1/1000. ELISA: 1/20000. Not yet tested in other applications.

**Format**

Liquid in PBS containing 50% glycerol, 0.5% BSA and 0.09% (W/V) sodium azide.

**Storage Conditions**

-20°C

**Mammaglobin B Polyclonal Antibody - Protein Information****Name** SCGB2A1**Synonyms** LIPHC, MGB2, UGB3**Function**

May bind androgens and other steroids, may also bind estramustine, a chemotherapeutic agent used for prostate cancer. May be under transcriptional regulation of steroid hormones.

**Cellular Location**

Secreted.

**Tissue Location**

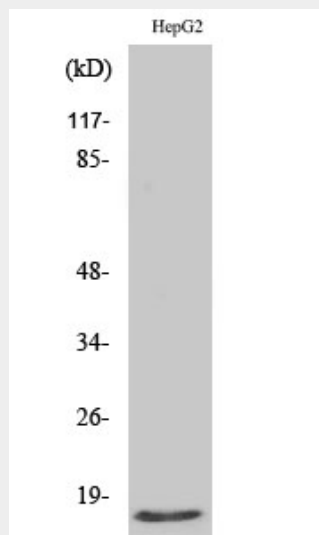
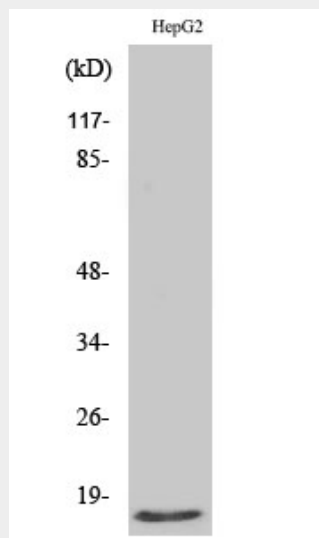
Expressed in thymus, trachea, kidney, steroid responsive tissues (prostate, testis, uterus, breast and ovary) and salivary gland

## Mammaglobin B Polyclonal Antibody - Protocols

Provided below are standard protocols that you may find useful for product applications.

- [Western Blot](#)
- [Blocking Peptides](#)
- [Dot Blot](#)
- [Immunohistochemistry](#)
- [Immunofluorescence](#)
- [Immunoprecipitation](#)
- [Flow Cytometry](#)
- [Cell Culture](#)

## Mammaglobin B Polyclonal Antibody - Images



## Mammaglobin B Polyclonal Antibody - Background

May bind androgens and other steroids, may also bind estramustine, a chemotherapeutic agent

used for prostate cancer. May be under transcriptional regulation of steroid hormones.