

MAGE-A5 Polyclonal Antibody
Catalog # AP70808**Specification**

MAGE-A5 Polyclonal Antibody - Product Information

Application	WB
Primary Accession	P43359
Reactivity	Human
Host	Rabbit
Clonality	Polyclonal

MAGE-A5 Polyclonal Antibody - Additional Information**Gene ID** 100533997**Other Names**

MAGEA5; MAGE5; Melanoma-associated antigen 5; Cancer/testis antigen 1.5; CT1.5; MAGE-5 antigen

Dilution

WB~~Western Blot: 1/500 - 1/2000. ELISA: 1/10000. Not yet tested in other applications.

Format

Liquid in PBS containing 50% glycerol, 0.5% BSA and 0.09% (W/V) sodium azide.

Storage Conditions

-20°C

MAGE-A5 Polyclonal Antibody - Protein Information**Name** MAGEA5P ([HGNC:6803](#))**Function**

May negatively regulates apoptosis.

Tissue Location

Expressed in many tumors of several types, such as melanoma, head and neck squamous cell carcinoma, lung carcinoma and breast carcinoma, but not in normal tissues except for testes

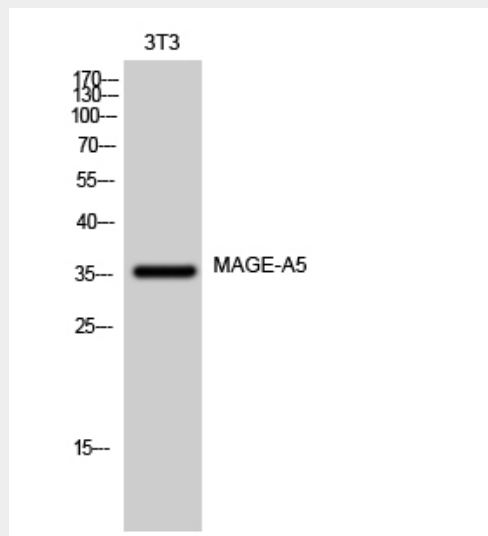
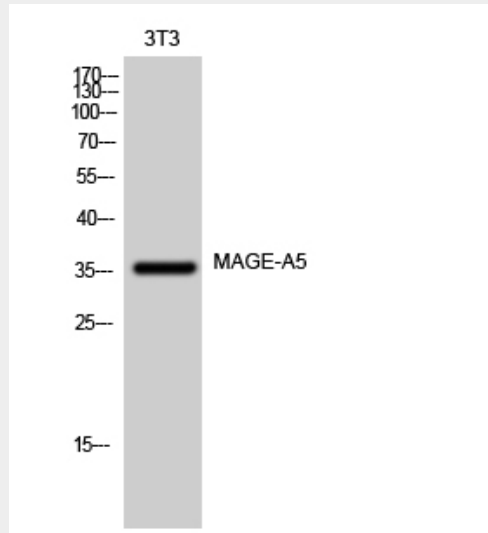
MAGE-A5 Polyclonal Antibody - Protocols

Provided below are standard protocols that you may find useful for product applications.

- [Western Blot](#)
- [Blocking Peptides](#)
- [Dot Blot](#)

- [Immunohistochemistry](#)
- [Immunofluorescence](#)
- [Immunoprecipitation](#)
- [Flow Cytometry](#)
- [Cell Culture](#)

MAGE-A5 Polyclonal Antibody - Images



MAGE-A5 Polyclonal Antibody - Background

Not known, though may play a role tumor transformation or progression. In vitro promotes cell viability in melanoma cell lines.