

MAD2 Polyclonal Antibody
Catalog # AP70801**Specification****MAD2 Polyclonal Antibody - Product Information**

Application	WB
Primary Accession	Q13257
Reactivity	Human
Host	Rabbit
Clonality	Polyclonal

MAD2 Polyclonal Antibody - Additional Information

Gene ID 4085

Other Names

MAD2L1; MAD2; Mitotic spindle assembly checkpoint protein MAD2A; HsMAD2; Mitotic arrest deficient 2-like protein 1; MAD2-like protein 1

Dilution

WB~~Western Blot: 1/500 - 1/2000. ELISA: 1/5000. Not yet tested in other applications.

Format

Liquid in PBS containing 50% glycerol, 0.5% BSA and 0.09% (W/V) sodium azide.

Storage Conditions

-20°C

MAD2 Polyclonal Antibody - Protein Information

Name MAD2L1

Synonyms MAD2

Function

Component of the spindle-assembly checkpoint that prevents the onset of anaphase until all chromosomes are properly aligned at the metaphase plate (PubMed: [15024386](http://www.uniprot.org/citations/15024386), PubMed: [29162720](http://www.uniprot.org/citations/29162720)). In the closed conformation (C-MAD2) forms a heterotetrameric complex with MAD1L1 at unattached kinetochores during prometaphase, the complex recruits open conformation molecules of MAD2L1 (O-MAD2) and then promotes the conversion of O-MAD2 to C-MAD2 (PubMed: [29162720](http://www.uniprot.org/citations/29162720)). Required for the execution of the mitotic checkpoint which monitors the process of kinetochore-spindle attachment and inhibits the activity of the anaphase promoting complex by sequestering CDC20 until all chromosomes are aligned at the metaphase plate (PubMed: [10700282](http://www.uniprot.org/citations/10700282), PubMed: [11804586](http://www.uniprot.org/citations/11804586), PubMed: [11804586](http://www.uniprot.org/citations/11804586), PubMed: [11804586](http://www.uniprot.org/citations/11804586)).

href="http://www.uniprot.org/citations/15024386" target="_blank">15024386).

Cellular Location

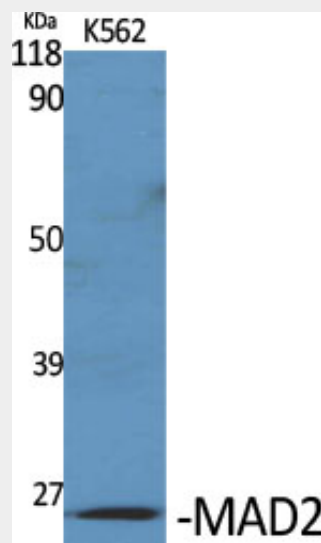
Nucleus. Chromosome, centromere, kinetochore. Cytoplasm. Cytoplasm, cytoskeleton, spindle pole Note=Recruited by MAD1L1 to unattached kinetochores (Probable) Recruited to the nuclear pore complex by TPR during interphase Recruited to kinetochores in late prometaphase after BUB1, CENPF, BUB1B and CENPE. Kinetochore association requires the presence of NEK2 Kinetochore association is repressed by UBD. Sequestered to the cytoplasm upon interaction with isoform 3 of MAD1L1 (PubMed:19010891) {ECO:0000269|PubMed:19010891, ECO:0000305}

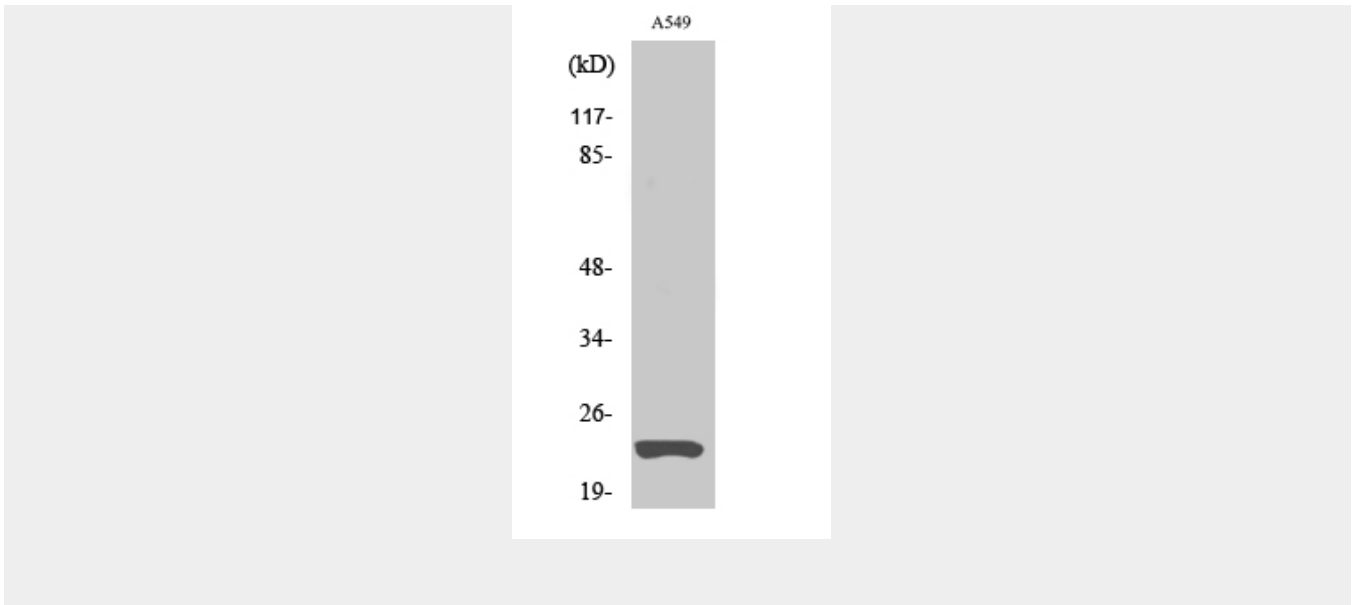
MAD2 Polyclonal Antibody - Protocols

Provided below are standard protocols that you may find useful for product applications.

- [Western Blot](#)
- [Blocking Peptides](#)
- [Dot Blot](#)
- [Immunohistochemistry](#)
- [Immunofluorescence](#)
- [Immunoprecipitation](#)
- [Flow Cytometry](#)
- [Cell Culture](#)

MAD2 Polyclonal Antibody - Images





MAD2 Polyclonal Antibody - Background

Component of the spindle-assembly checkpoint that prevents the onset of anaphase until all chromosomes are properly aligned at the metaphase plate. Required for the execution of the mitotic checkpoint which monitors the process of kinetochore- spindle attachment and inhibits the activity of the anaphase promoting complex by sequestering CDC20 until all chromosomes are aligned at the metaphase plate.