

CSNK2B Antibody (C-term F168)
Purified Rabbit Polyclonal Antibody (Pab)
Catalog # AP7075e

Specification

CSNK2B Antibody (C-term F168) - Product Information

Application	WB,E
Primary Accession	P67870
Other Accession	P28021 , P67874 , P67873 , P67872 , P67871 , O91398 , P67869 , P67868
Reactivity	Human
Predicted	Bovine, Chicken, Zebrafish, Mouse, Pig, Rabbit, Rat, Xenopus
Host	Rabbit
Clonality	Polyclonal
Isotype	Rabbit IgG
Calculated MW	24942
Antigen Region	153-184

CSNK2B Antibody (C-term F168) - Additional Information

Gene ID 1460

Other Names

Casein kinase II subunit beta, CK II beta, Phosvitin, Protein G5a, CSNK2B, CK2N, G5A

Target/Specificity

This CSNK2B antibody is generated from rabbits immunized with a KLH conjugated synthetic peptide between 153-184 amino acids from the C-terminal region of human CSNK2B.

Dilution

WB~~1:1000

Format

Purified polyclonal antibody supplied in PBS with 0.09% (W/V) sodium azide. This antibody is prepared by Saturated Ammonium Sulfate (SAS) precipitation followed by dialysis against PBS.

Storage

Maintain refrigerated at 2-8°C for up to 2 weeks. For long term storage store at -20°C in small aliquots to prevent freeze-thaw cycles.

Precautions

CSNK2B Antibody (C-term F168) is for research use only and not for use in diagnostic or therapeutic procedures.

CSNK2B Antibody (C-term F168) - Protein Information

Name CSNK2B ([HGNC:2460](#))

Synonyms CK2N, G5A

Function Regulatory subunit of casein kinase II/CK2. As part of the kinase complex regulates the basal catalytic activity of the alpha subunit a constitutively active serine/threonine-protein kinase that phosphorylates a large number of substrates containing acidic residues C-terminal to the phosphorylated serine or threonine (PubMed:[11239457](#), PubMed:[16818610](#)). Participates in Wnt signaling (By similarity).

Cellular Location

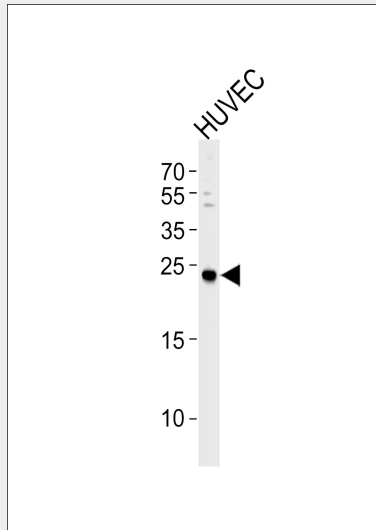
Nucleus.

CSNK2B Antibody (C-term F168) - Protocols

Provided below are standard protocols that you may find useful for product applications.

- [Western Blot](#)
- [Blocking Peptides](#)
- [Dot Blot](#)
- [Immunohistochemistry](#)
- [Immunofluorescence](#)
- [Immunoprecipitation](#)
- [Flow Cytometry](#)
- [Cell Culture](#)

CSNK2B Antibody (C-term F168) - Images



Western blot analysis of lysate from HUVEC cell line, using CSNK2B Antibody (Cat. #AP7075e). AP7075e was diluted at 1:1000 at each lane. A goat anti-rabbit IgG H&L (HRP) at 1:5000 dilution was used as the secondary antibody. Lysate at 35ug per lane.

CSNK2B Antibody (C-term F168) - Background

CSNK2B is the beta subunit of casein kinase II, a ubiquitous protein kinase which regulates metabolic pathways, signal transduction, transcription, translation, and replication. The enzyme is composed of three subunits, alpha, alpha prime and beta, which form a tetrameric holoenzyme. The alpha and alpha prime subunits are catalytic, while the beta subunit serves regulatory functions. The enzyme localizes to the endoplasmic reticulum and the Golgi apparatus.

CSNK2B Antibody (C-term F168) - References

- Schwartz, E.I., et al., Mol. Cell. Biol. 24(21):9580-9591 (2004).
Lee, G., et al., J. Biol. Chem. 279(8):6834-6839 (2004).
Lim, A.C., et al., J. Biol. Chem. 279(6):4433-4439 (2004).
Singh, D.K., et al., Virology 313(2):435-451 (2003).
Szebeni, A., et al., J. Biol. Chem. 278(11):9107-9115 (2003).