

LIMK-2 Polyclonal Antibody
Catalog # AP70750**Specification****LIMK-2 Polyclonal Antibody - Product Information**

Application	WB
Primary Accession	P53671
Reactivity	Human, Mouse, Rat
Host	Rabbit
Clonality	Polyclonal

LIMK-2 Polyclonal Antibody - Additional Information

Gene ID 3985

Other Names

LIMK2; LIM domain kinase 2; LIMK-2

Dilution

WB~~Western Blot: 1/500 - 1/2000. Immunohistochemistry: 1/100 - 1/300. Immunofluorescence: 1/200 - 1/1000. ELISA: 1/40000. Not yet tested in other applications.

Format

Liquid in PBS containing 50% glycerol, 0.5% BSA and 0.09% (W/V) sodium azide.

Storage Conditions

-20°C

LIMK-2 Polyclonal Antibody - Protein Information

Name LIMK2

Function

Serine/threonine-protein kinase that plays an essential role in the regulation of actin filament dynamics (PubMed: [10436159](http://www.uniprot.org/citations/10436159), PubMed: [11018042](http://www.uniprot.org/citations/11018042)). Acts downstream of several Rho family GTPase signal transduction pathways (PubMed: [10436159](http://www.uniprot.org/citations/10436159), PubMed: [11018042](http://www.uniprot.org/citations/11018042)). Involved in astral microtubule organization and mitotic spindle orientation during early stages of mitosis by mediating phosphorylation of TPPP (PubMed: [22328514](http://www.uniprot.org/citations/22328514)). Displays serine/threonine-specific phosphorylation of myelin basic protein and histone (MBP) in vitro (PubMed: [8537403](http://www.uniprot.org/citations/8537403)). Suppresses ciliogenesis via multiple pathways; phosphorylation of CFL1, suppression of directional trafficking of ciliary vesicles to the ciliary base, and by facilitating YAP1 nuclear localization where it acts as a transcriptional corepressor of the TEAD4 target genes AURKA and PLK1 (PubMed: [25849865](http://www.uniprot.org/citations/25849865)).

Cellular Location

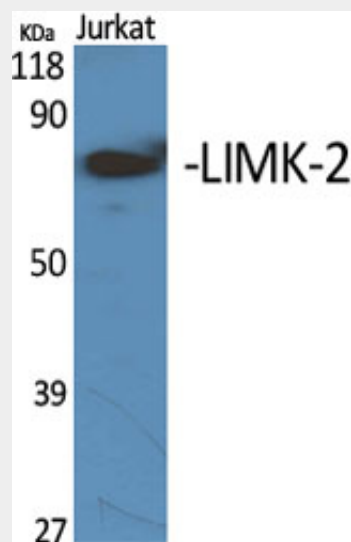
Cytoplasm, cytoskeleton, spindle. Cytoplasm, cytoskeleton, microtubule organizing center, centrosome [Isoform LIMK2b]: Cytoplasm. Cytoplasm, perinuclear region. Nucleus Note=Mainly present in the cytoplasm and is scarcely translocated to the nucleus.

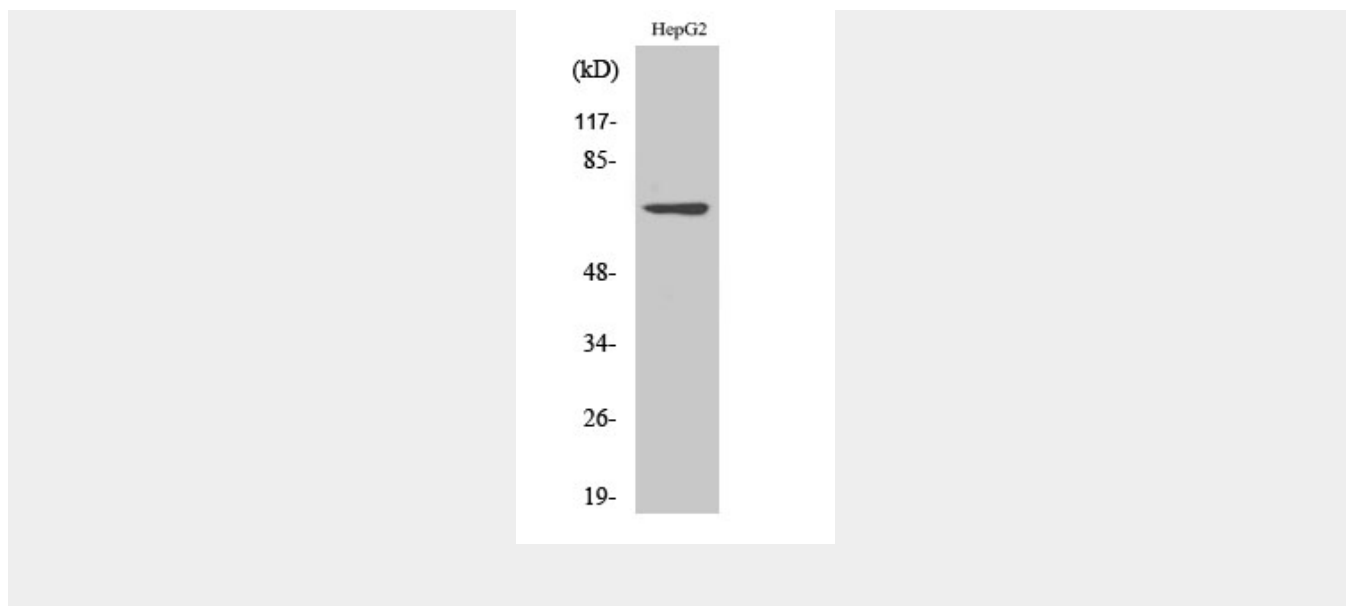
LIMK-2 Polyclonal Antibody - Protocols

Provided below are standard protocols that you may find useful for product applications.

- [Western Blot](#)
- [Blocking Peptides](#)
- [Dot Blot](#)
- [Immunohistochemistry](#)
- [Immunofluorescence](#)
- [Immunoprecipitation](#)
- [Flow Cytometry](#)
- [Cell Culture](#)

LIMK-2 Polyclonal Antibody - Images





LIMK-2 Polyclonal Antibody - Background

Displays serine/threonine-specific phosphorylation of myelin basic protein and histone (MBP) in vitro.