

KIR2.3 Polyclonal Antibody
Catalog # AP70657**Specification****KIR2.3 Polyclonal Antibody - Product Information**

Application	WB
Primary Accession	P48050
Reactivity	Human, Mouse, Rat
Host	Rabbit
Clonality	Polyclonal

KIR2.3 Polyclonal Antibody - Additional Information

Gene ID 3761

Other Names

KCNJ4; IRK3; Inward rectifier potassium channel 4; HIRK2; HRK1; Hippocampal inward rectifier; HIR; Inward rectifier K(+) channel Kir2.3; IRK-3; Potassium channel; inwardly rectifying subfamily J member 4

Dilution

WB~~Western Blot: 1/500 - 1/2000. ELISA: 1/40000. Not yet tested in other applications.

Format

Liquid in PBS containing 50% glycerol, 0.5% BSA and 0.09% (W/V) sodium azide.

Storage Conditions

-20°C

KIR2.3 Polyclonal Antibody - Protein Information

Name KCNJ4

Synonyms IRK3

Function

Inward rectifier potassium channels are characterized by a greater tendency to allow potassium to flow into the cell rather than out of it. Their voltage dependence is regulated by the concentration of extracellular potassium; as external potassium is raised, the voltage range of the channel opening shifts to more positive voltages. The inward rectification is mainly due to the blockage of outward current by internal magnesium. Can be blocked by extracellular barium and cesium.

Cellular Location

Cell membrane {ECO:0000250|UniProtKB:P52189}; Multi-pass membrane protein. Postsynaptic cell membrane {ECO:0000250|UniProtKB:P52189}; Multi-pass membrane protein. Cytoplasmic vesicle membrane {ECO:0000250|UniProtKB:P52189}. Note=TAX1BP3 binding promotes dissociation of KCNJ4 from LIN7 family members and KCNJ4 internalization. {ECO:0000250|UniProtKB:P52189}

Tissue Location

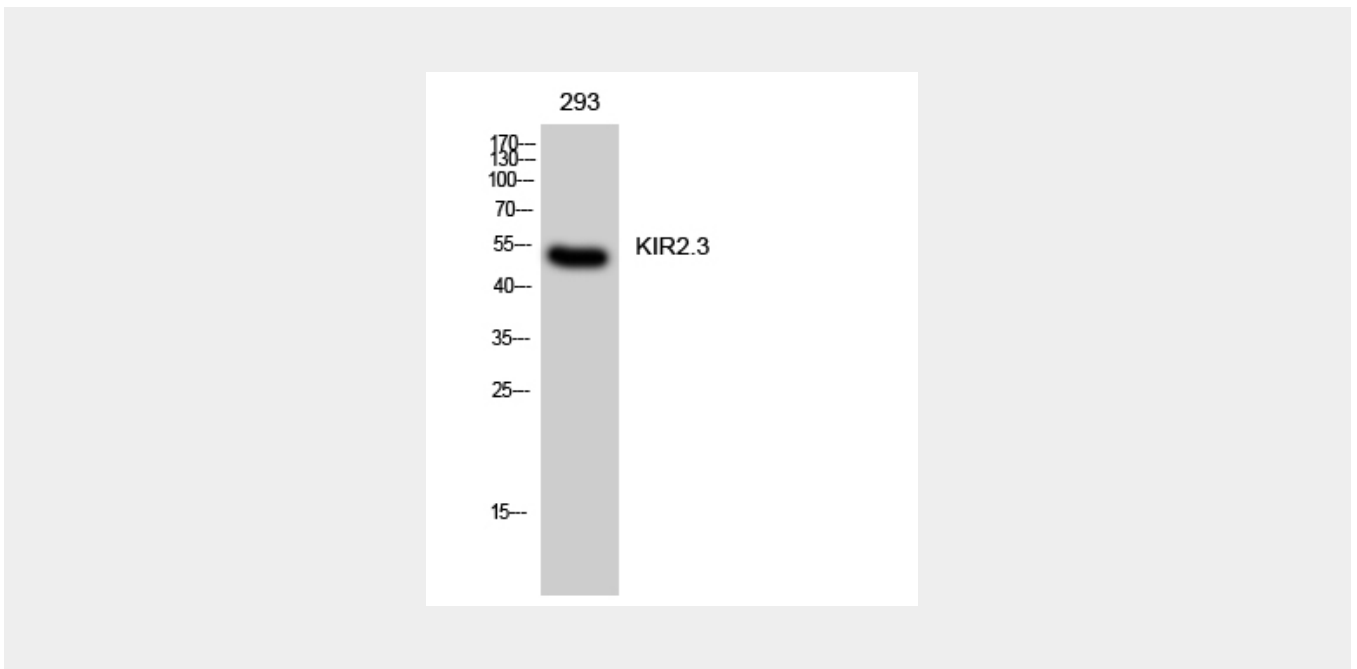
Heart, skeletal muscle, and several different brain regions including the hippocampus

KIR2.3 Polyclonal Antibody - Protocols

Provided below are standard protocols that you may find useful for product applications.

- [Western Blot](#)
- [Blocking Peptides](#)
- [Dot Blot](#)
- [Immunohistochemistry](#)
- [Immunofluorescence](#)
- [Immunoprecipitation](#)
- [Flow Cytometry](#)
- [Cell Culture](#)

KIR2.3 Polyclonal Antibody - Images



KIR2.3 Polyclonal Antibody - Background

Inward rectifier potassium channels are characterized by a greater tendency to allow potassium to flow into the cell rather than out of it. Their voltage dependence is regulated by the concentration of extracellular potassium; as external potassium is raised, the voltage range of the channel opening shifts to more positive voltages. The inward rectification is mainly due to the blockage of outward current by internal magnesium. Can be blocked by extracellular barium and cesium (By similarity).