

**KDEL Receptor 2 Polyclonal Antibody**  
Catalog # AP70645**Specification****KDEL Receptor 2 Polyclonal Antibody - Product Information**

Application	WB
Primary Accession	<a href="#">P33947</a>
Reactivity	Human, Mouse, Rat
Host	Rabbit
Clonality	Polyclonal

**KDEL Receptor 2 Polyclonal Antibody - Additional Information****Gene ID** 11014**Other Names**

KDEL2; ERD2.2; ER lumen protein retaining receptor 2; ERD2-like protein 1; ELP-1; KDEL endoplasmic reticulum protein retention receptor 2; KDEL receptor 2

**Dilution**

WB~Western Blot: 1/500 - 1/2000. Immunohistochemistry: 1/100 - 1/300. Immunofluorescence: 1/200 - 1/1000. ELISA: 1/20000. Not yet tested in other applications.

**Format**

Liquid in PBS containing 50% glycerol, 0.5% BSA and 0.09% (W/V) sodium azide.

**Storage Conditions**

-20°C

**KDEL Receptor 2 Polyclonal Antibody - Protein Information****Name** KDEL2**Synonyms** ERD2.2 {ECO:0000303|PubMed:1325562}**Function**

Membrane receptor that binds the K-D-E-L sequence motif in the C-terminal part of endoplasmic reticulum resident proteins and maintains their localization in that compartment by participating to their vesicle-mediated recycling back from the Golgi (PubMed:[1325562](http://www.uniprot.org/citations/1325562), PubMed:[18086916](http://www.uniprot.org/citations/18086916), PubMed:[33053334](http://www.uniprot.org/citations/33053334)). Binding is pH dependent, and is optimal at pH 5-5.4 (By similarity).

**Cellular Location**

Endoplasmic reticulum membrane; Multi-pass membrane protein {ECO:0000250|UniProtKB:Q5ZKX9}. Golgi apparatus membrane; Multi-pass membrane protein {ECO:0000250|UniProtKB:Q5ZKX9}. Cytoplasmic vesicle, COPI-coated vesicle membrane;

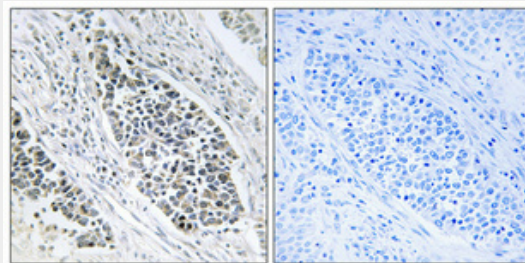
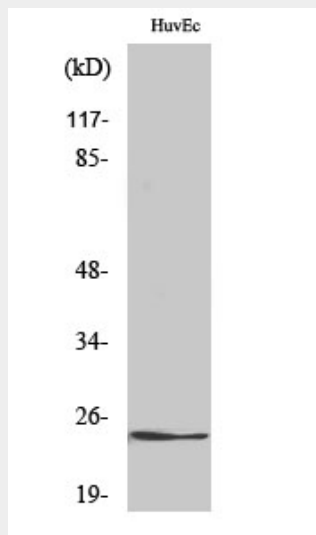
Multi-pass membrane protein {ECO:0000250|UniProtKB:Q5ZKX9} Note=Localized in the Golgi in the absence of bound proteins with the sequence motif K-D-E-L. Trafficks back to the endoplasmic reticulum together with cargo proteins containing the sequence motif K-D-E-L

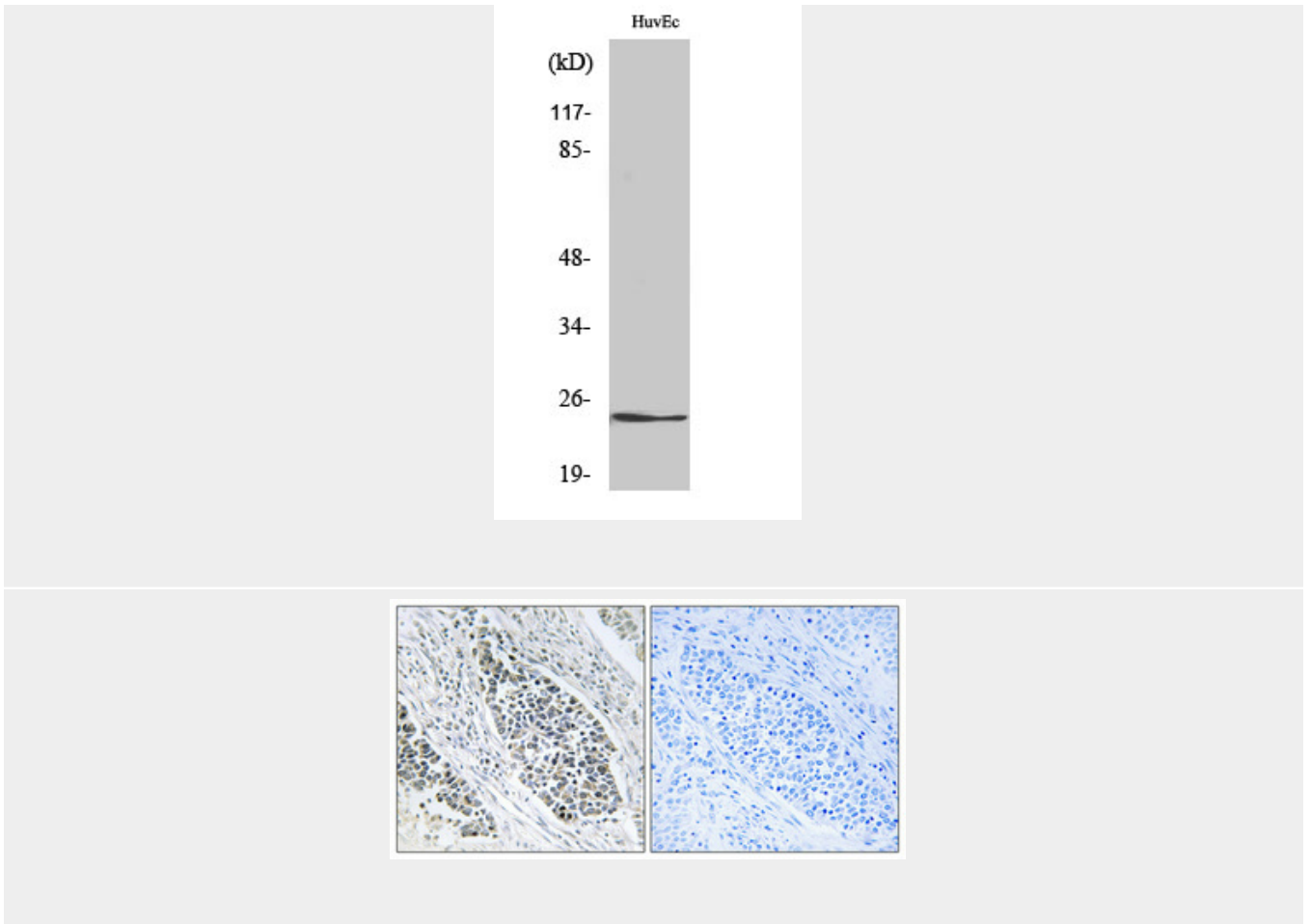
### KDEL Receptor 2 Polyclonal Antibody - Protocols

Provided below are standard protocols that you may find useful for product applications.

- [Western Blot](#)
- [Blocking Peptides](#)
- [Dot Blot](#)
- [Immunohistochemistry](#)
- [Immunofluorescence](#)
- [Immunoprecipitation](#)
- [Flow Cytometry](#)
- [Cell Culture](#)

### KDEL Receptor 2 Polyclonal Antibody - Images





### **KDEL Receptor 2 Polyclonal Antibody - Background**

Required for the retention of luminal endoplasmic reticulum proteins. Determines the specificity of the luminal ER protein retention system. Also required for normal vesicular traffic through the Golgi. This receptor recognizes K-D-E-L.