

Thymidine Kinase 2 Antibody (C-term)
Purified Rabbit Polyclonal Antibody (Pab)
Catalog # AP7062b

Specification

Thymidine Kinase 2 Antibody (C-term) - Product Information

Application	WB,E
Primary Accession	O00142
Reactivity	Human
Host	Rabbit
Clonality	Polyclonal
Isotype	Rabbit IgG
Antigen Region	233-263

Thymidine Kinase 2 Antibody (C-term) - Additional Information

Gene ID 7084

Other Names

Thymidine kinase 2, mitochondrial, Mt-TK, TK2

Target/Specificity

This Thymidine Kinase 2 antibody is generated from rabbits immunized with a KLH conjugated synthetic peptide between 233-263 amino acids from the C-terminal region of human Thymidine Kinase 2.

Dilution

WB~~1:1000

Format

Purified polyclonal antibody supplied in PBS with 0.09% (W/V) sodium azide. This antibody is prepared by Saturated Ammonium Sulfate (SAS) precipitation followed by dialysis against PBS.

Storage

Maintain refrigerated at 2-8°C for up to 2 weeks. For long term storage store at -20°C in small aliquots to prevent freeze-thaw cycles.

Precautions

Thymidine Kinase 2 Antibody (C-term) is for research use only and not for use in diagnostic or therapeutic procedures.

Thymidine Kinase 2 Antibody (C-term) - Protein Information

Name TK2 {ECO:0000303|PubMed:9989599, ECO:0000312|HGNC:HGNC:11831}

Function Phosphorylates thymidine, deoxycytidine, and deoxyuridine in the mitochondrial matrix (PubMed:[11687801](#), PubMed:[9989599](#)). In non-replicating cells, where cytosolic dNTP synthesis is down-regulated, mtDNA synthesis depends solely on TK2 and DGUOK (PubMed:[9989599](#)). Widely

used as target of antiviral and chemotherapeutic agents (PubMed:[9989599](#)).

Cellular Location

Mitochondrion.

Tissue Location

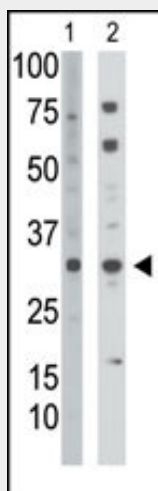
Predominantly expressed in liver, pancreas, muscle, and brain.

Thymidine Kinase 2 Antibody (C-term) - Protocols

Provided below are standard protocols that you may find useful for product applications.

- [Western Blot](#)
- [Blocking Peptides](#)
- [Dot Blot](#)
- [Immunohistochemistry](#)
- [Immunofluorescence](#)
- [Immunoprecipitation](#)
- [Flow Cytometry](#)
- [Cell Culture](#)

Thymidine Kinase 2 Antibody (C-term) - Images



The anti-TK2 Pab (Cat. #AP7062b) is used in Western blot to detect TK2 in mouse muscle tissue lysate (Lane 1) and HepG2 cell lysate (Lane 2).

Thymidine Kinase 2 Antibody (C-term) - Background

Thymidine kinase-2 (TK2) is a deoxyribonucleoside kinase that phosphorylates thymidine, deoxycytidine, and deoxyuridine, and also phosphorylates antiviral and anticancer nucleoside analogs. Both recombinant and native forms of the enzyme have broad substrate specificity and complex kinetics, suggesting that it may play a role in the activation of chemotherapeutic nucleoside analogs. The highest levels of expression are observed in testis and ovary. The main supply of deoxyribonucleotides (dNTPs) for mitochondrial DNA synthesis comes from the salvage pathway initiated by deoxyguanosine kinase (DGK) and TK2. The association of mitochondrial DNA depletion with mutations in the genes encoding these 2 kinases suggests that the salvage pathway enzymes are involved in the maintenance of balanced mitochondrial dNTP pools.