

Islet-2 Polyclonal Antibody
Catalog # AP70598**Specification**

Islet-2 Polyclonal Antibody - Product Information

Application	WB
Primary Accession	Q96A47
Reactivity	Human, Mouse, Rat
Host	Rabbit
Clonality	Polyclonal

Islet-2 Polyclonal Antibody - Additional Information**Gene ID** 64843**Other Names**

ISL2; Insulin gene enhancer protein ISL-2; Islet-2

Dilution

WB~~Western Blot: 1/500 - 1/2000. Immunofluorescence: 1/200 - 1/1000. ELISA: 1/20000. Not yet tested in other applications.

Format

Liquid in PBS containing 50% glycerol, 0.5% BSA and 0.09% (W/V) sodium azide.

Storage Conditions

-20°C

Islet-2 Polyclonal Antibody - Protein Information**Name** ISL2**Function**

Transcriptional factor that defines subclasses of motoneurons that segregate into columns in the spinal cord and select distinct axon pathways.

Cellular Location

Nucleus {ECO:0000255|PROSITE-ProRule:PRU00108}.

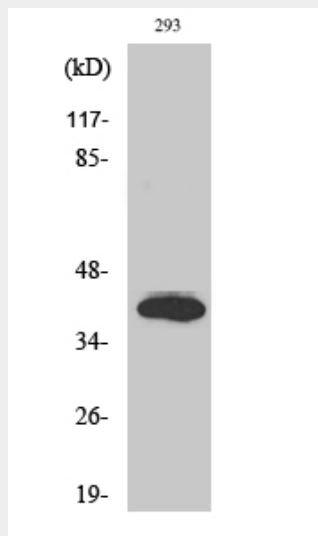
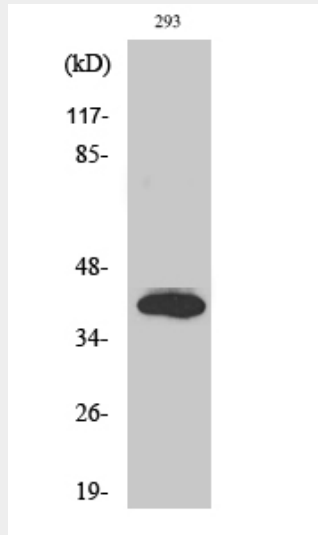
Islet-2 Polyclonal Antibody - Protocols

Provided below are standard protocols that you may find useful for product applications.

- [Western Blot](#)
- [Blocking Peptides](#)
- [Dot Blot](#)

- [Immunohistochemistry](#)
- [Immunofluorescence](#)
- [Immunoprecipitation](#)
- [Flow Cytometry](#)
- [Cell Culture](#)

Islet-2 Polyclonal Antibody - Images



Islet-2 Polyclonal Antibody - Background

Transcriptional factor that defines subclasses of motoneurons that segregate into columns in the spinal cord and select distinct axon pathways.