

**IQGAP1 Polyclonal Antibody**  
Catalog # AP70570**Specification****IQGAP1 Polyclonal Antibody - Product Information**

Application	<b>WB</b>
Primary Accession	<a href="#">P46940</a>
Reactivity	<b>Human, Mouse</b>
Host	<b>Rabbit</b>
Clonality	<b>Polyclonal</b>

**IQGAP1 Polyclonal Antibody - Additional Information****Gene ID** 8826**Other Names**

IQGAP1; KIAA0051; Ras GTPase-activating-like protein IQGAP1; p195

**Dilution**

WB~~Western Blot: 1/500 - 1/2000. ELISA: 1/20000. Not yet tested in other applications.

**Format**

Liquid in PBS containing 50% glycerol, 0.5% BSA and 0.09% (W/V) sodium azide.

**Storage Conditions**

-20°C

**IQGAP1 Polyclonal Antibody - Protein Information****Name** IQGAP1**Synonyms** KIAA0051**Function**

Plays a crucial role in regulating the dynamics and assembly of the actin cytoskeleton. Binds to activated CDC42 but does not stimulate its GTPase activity. It associates with calmodulin. Could serve as an assembly scaffold for the organization of a multimolecular complex that would interface incoming signals to the reorganization of the actin cytoskeleton at the plasma membrane. May promote neurite outgrowth (PubMed:<a href="http://www.uniprot.org/citations/15695813" target="\_blank">15695813</a>). May play a possible role in cell cycle regulation by contributing to cell cycle progression after DNA replication arrest (PubMed:<a href="http://www.uniprot.org/citations/20883816" target="\_blank">20883816</a>).

**Cellular Location**

Cell membrane. Nucleus. Cytoplasm. Apical cell membrane. Basolateral cell membrane {ECO:0000250|UniProtKB:Q9JKF1}. Note=Subcellular distribution is regulated by the cell cycle, nuclear levels increase at G1/S phase (PubMed:20883816).

### Tissue Location

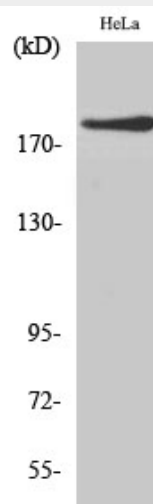
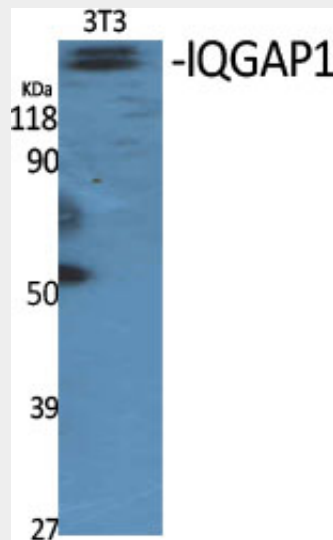
Expressed in the placenta, lung, and kidney (PubMed:8051149). A lower level expression is seen in the heart, liver, skeletal muscle and pancreas (PubMed:8051149)

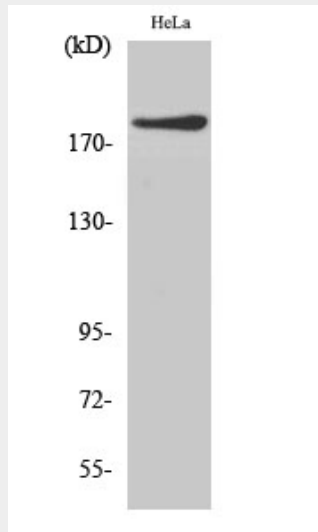
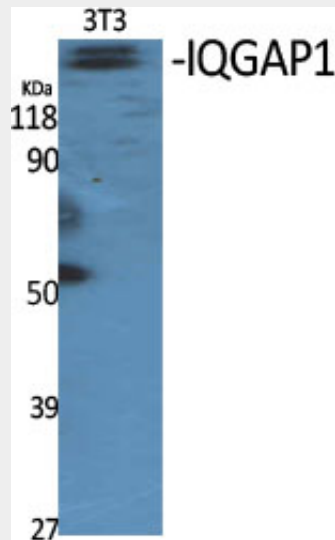
### IQGAP1 Polyclonal Antibody - Protocols

Provided below are standard protocols that you may find useful for product applications.

- [Western Blot](#)
- [Blocking Peptides](#)
- [Dot Blot](#)
- [Immunohistochemistry](#)
- [Immunofluorescence](#)
- [Immunoprecipitation](#)
- [Flow Cytometry](#)
- [Cell Culture](#)

### IQGAP1 Polyclonal Antibody - Images





### **IQGAP1 Polyclonal Antibody - Background**

Plays a crucial role in regulating the dynamics and assembly of the actin cytoskeleton. Binds to activated CDC42 but does not stimulate its GTPase activity. It associates with calmodulin. Could serve as an assembly scaffold for the organization of a multimolecular complex that would interface incoming signals to the reorganization of the actin cytoskeleton at the plasma membrane. May promote neurite outgrowth (PubMed:15695813). May play a possible role in cell cycle regulation by contributing to cell cycle progression after DNA replication arrest (PubMed:20883816).