

**IP6K2 Polyclonal Antibody**  
Catalog # AP70565

**Specification**

---

**IP6K2 Polyclonal Antibody - Product Information**

Application	WB
Primary Accession	<a href="#">Q9UHH9</a>
Reactivity	Human, Mouse, Rat
Host	Rabbit
Clonality	Polyclonal

**IP6K2 Polyclonal Antibody - Additional Information**

**Gene ID** 51447

**Other Names**

IP6K2; IHPK2; TCCCIA00113; Inositol hexakisphosphate kinase 2; InsP6 kinase 2; P(i)-uptake stimulator; PiUS

**Dilution**

WB~~Western Blot: 1/500 - 1/2000. Immunohistochemistry: 1/100 - 1/300. Immunofluorescence: 1/200 - 1/1000. ELISA: 1/40000. Not yet tested in other applications.

**Format**

Liquid in PBS containing 50% glycerol, 0.5% BSA and 0.09% (W/V) sodium azide.

**Storage Conditions**

-20°C

**IP6K2 Polyclonal Antibody - Protein Information**

**Name** IP6K2 {ECO:0000303|PubMed:30624931}

**Synonyms** IHPK2

**Function**

Converts inositol hexakisphosphate (InsP6) to diphosphoinositol pentakisphosphate (InsP7/PP-InsP5).

**Cellular Location**

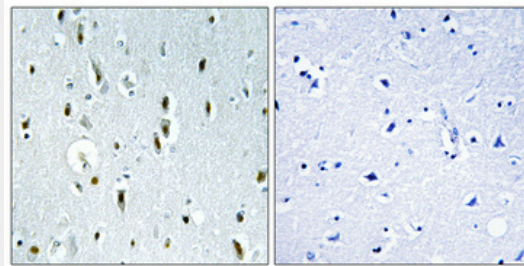
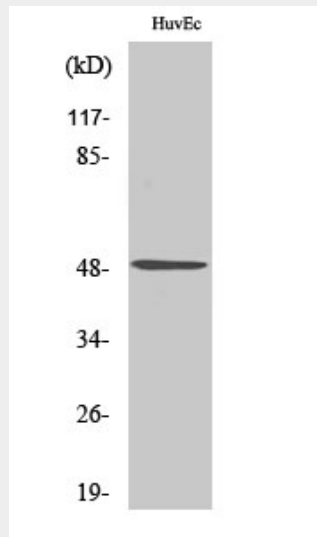
Nucleus.

**IP6K2 Polyclonal Antibody - Protocols**

Provided below are standard protocols that you may find useful for product applications.

- [Western Blot](#)
- [Blocking Peptides](#)
- [Dot Blot](#)
- [Immunohistochemistry](#)
- [Immunofluorescence](#)
- [Immunoprecipitation](#)
- [Flow Cytometry](#)
- [Cell Culture](#)

### IP6K2 Polyclonal Antibody - Images



### IP6K2 Polyclonal Antibody - Background

Converts inositol hexakisphosphate (InsP6) to diphosphoinositol pentakisphosphate (InsP7/PP-InsP5). Converts 1,3,4,5,6-pentakisphosphate (InsP5) to PP-InsP4.