

## Involucrin Polyclonal Antibody

Catalog # AP70560

### Specification

---

#### Involucrin Polyclonal Antibody - Product Information

Application	WB
Primary Accession	<a href="#">P07476</a>
Reactivity	Human
Host	Rabbit
Clonality	Polyclonal

#### Involucrin Polyclonal Antibody - Additional Information

**Gene ID** 3713

**Other Names**  
IVL; Involucrin

**Dilution**

WB~~Western Blot: 1/500 - 1/2000. Immunohistochemistry: 1/100 - 1/300. ELISA: 1/20000. Not yet tested in other applications.

**Format**

Liquid in PBS containing 50% glycerol, 0.5% BSA and 0.09% (W/V) sodium azide.

**Storage Conditions**

-20°C

#### Involucrin Polyclonal Antibody - Protein Information

**Name** IVL

**Function**

Part of the insoluble cornified cell envelope (CE) of stratified squamous epithelia.

**Cellular Location**

Cytoplasm. Note=Constituent of the scaffolding of the cornified envelope

**Tissue Location**

Keratinocytes of epidermis and other stratified squamous epithelia

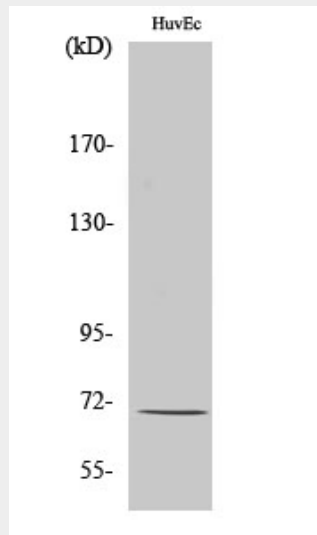
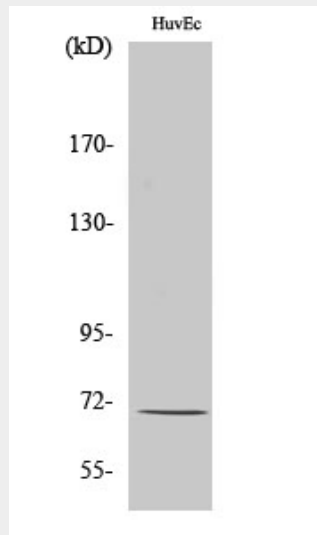
#### Involucrin Polyclonal Antibody - Protocols

Provided below are standard protocols that you may find useful for product applications.

- [Western Blot](#)

- [Blocking Peptides](#)
- [Dot Blot](#)
- [Immunohistochemistry](#)
- [Immunofluorescence](#)
- [Immunoprecipitation](#)
- [Flow Cytometry](#)
- [Cell Culture](#)

### Involucrin Polyclonal Antibody - Images



### Involucrin Polyclonal Antibody - Background

Part of the insoluble cornified cell envelope (CE) of stratified squamous epithelia.