

**IL-3R $\beta$  Polyclonal Antibody**  
Catalog # AP70516**Specification****IL-3R $\beta$  Polyclonal Antibody - Product Information**

Application	WB
Primary Accession	<a href="#">P32927</a>
Reactivity	Human, Mouse, Rat
Host	Rabbit
Clonality	Polyclonal

**IL-3R $\beta$  Polyclonal Antibody - Additional Information****Gene ID** 1439**Other Names**

CSF2RB; IL3RB; IL5RB; Cytokine receptor common subunit beta; CDw131; GM-CSF/IL-3/IL-5 receptor common beta subunit; CD antigen CD131

**Dilution**

WB~~Western Blot: 1/500 - 1/2000. Immunohistochemistry: 1/100 - 1/300. ELISA: 1/5000. Not yet tested in other applications.

**Format**

Liquid in PBS containing 50% glycerol, 0.5% BSA and 0.09% (W/V) sodium azide.

**Storage Conditions**

-20°C

**IL-3R $\beta$  Polyclonal Antibody - Protein Information****Name** CSF2RB**Synonyms** IL3RB, IL5RB**Function**

Cell surface receptor that plays a role in immune response and controls the production and differentiation of hematopoietic progenitor cells into lineage-restricted cells. Acts by forming an heterodimeric receptor through interaction with different partners such as IL3RA, IL5RA or CSF2RA (PubMed:<a href="http://www.uniprot.org/citations/1495999" target="\_blank">1495999</a>). In turn, participates in various signaling pathways including interleukin-3, interleukin-5 and granulocyte-macrophage colony-stimulating factor/CSF2 pathways. In unstimulated conditions, interacts constitutively with JAK1 and ligand binding leads to JAK1 stimulation and subsequent activation of the JAK- STAT pathway (PubMed:<a href="http://www.uniprot.org/citations/9516124" target="\_blank">9516124</a>).

**Cellular Location**

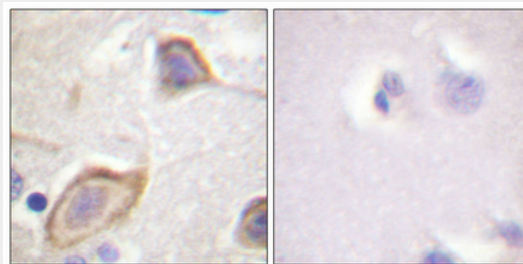
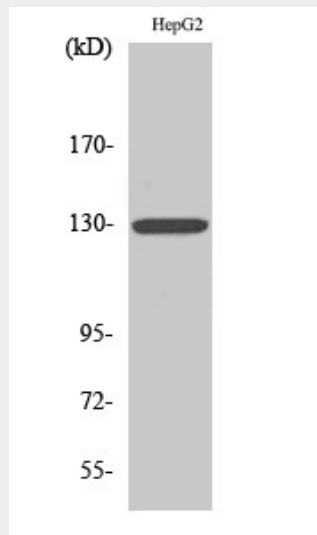
Membrane; Single-pass type I membrane protein.

## IL-3R $\beta$ Polyclonal Antibody - Protocols

Provided below are standard protocols that you may find useful for product applications.

- [Western Blot](#)
- [Blocking Peptides](#)
- [Dot Blot](#)
- [Immunohistochemistry](#)
- [Immunofluorescence](#)
- [Immunoprecipitation](#)
- [Flow Cytometry](#)
- [Cell Culture](#)

## IL-3R $\beta$ Polyclonal Antibody - Images



## IL-3R $\beta$ Polyclonal Antibody - Background

High affinity receptor for interleukin-3, interleukin-5 and granulocyte-macrophage colony-stimulating factor.