

IL-32 Polyclonal Antibody
Catalog # AP70515**Specification**

IL-32 Polyclonal Antibody - Product Information

Application	WB
Primary Accession	P24001
Reactivity	Human
Host	Rabbit
Clonality	Polyclonal

IL-32 Polyclonal Antibody - Additional Information**Gene ID** 9235**Other Names**

IL32; NK4; TAIF; Interleukin-32; IL-32; Natural killer cells protein 4; Tumor necrosis factor alpha-inducing factor

Dilution

WB~~Western Blot: 1/500 - 1/2000. Immunohistochemistry: 1/100 - 1/300. ELISA: 1/40000. Not yet tested in other applications.

Format

Liquid in PBS containing 50% glycerol, 0.5% BSA and 0.09% (W/V) sodium azide.

Storage Conditions

-20°C

IL-32 Polyclonal Antibody - Protein Information**Name** IL32**Synonyms** NK4, TAIF**Function**

Cytokine that may play a role in innate and adaptive immune responses. It induces various cytokines such as TNFA/TNF-alpha and IL8. It activates typical cytokine signal pathways of NF-kappa-B and p38 MAPK.

Cellular Location

Secreted.

Tissue Location

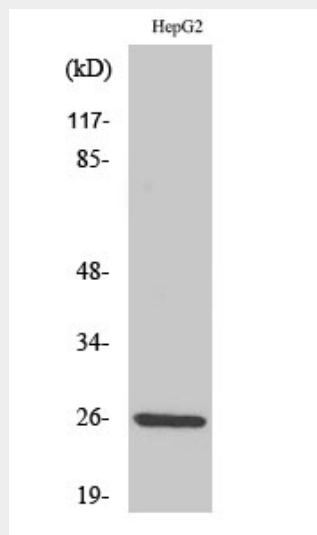
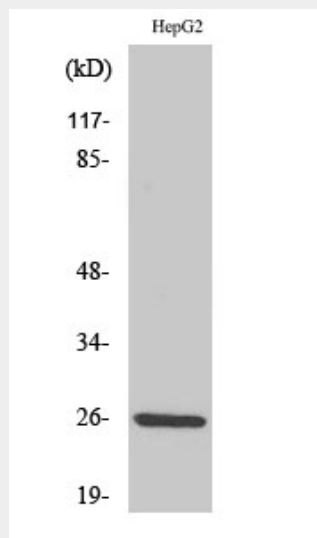
Selectively expressed in lymphocytes. Expression is more prominent in immune cells than in non-immune cells

IL-32 Polyclonal Antibody - Protocols

Provided below are standard protocols that you may find useful for product applications.

- [Western Blot](#)
- [Blocking Peptides](#)
- [Dot Blot](#)
- [Immunohistochemistry](#)
- [Immunofluorescence](#)
- [Immunoprecipitation](#)
- [Flow Cytometry](#)
- [Cell Culture](#)

IL-32 Polyclonal Antibody - Images



IL-32 Polyclonal Antibody - Background

Cytokine that may play a role in innate and adaptive immune responses. It induces various

cytokines such as TNFA/TNF- alpha and IL8. It activates typical cytokine signal pathways of NF-kappa-B and p38 MAPK.