

IL-11R α Polyclonal Antibody
Catalog # AP70493**Specification**

IL-11R α Polyclonal Antibody - Product Information

Application	WB
Primary Accession	Q14626
Reactivity	Human
Host	Rabbit
Clonality	Polyclonal

IL-11R α Polyclonal Antibody - Additional Information**Gene ID** 3590**Other Names**

IL11RA; Interleukin-11 receptor subunit alpha; IL-11 receptor subunit alpha; IL-11R subunit alpha; IL-11R-alpha; IL-11RA

Dilution

WB~~Western Blot: 1/500 - 1/2000. ELISA: 1/20000. Not yet tested in other applications.

Format

Liquid in PBS containing 50% glycerol, 0.5% BSA and 0.09% (W/V) sodium azide.

Storage Conditions

-20°C

IL-11R α Polyclonal Antibody - Protein Information**Name** IL11RA ([HGNC:5967](#))**Function**

Receptor for interleukin-11 (IL11). The receptor systems for IL6, LIF, OSM, CNTF, IL11 and CT1 can utilize IL6ST for initiating signal transmission. The IL11/IL11RA/IL6ST complex may be involved in the control of proliferation and/or differentiation of skeletogenic progenitor or other mesenchymal cells (Probable). Essential for the normal development of craniofacial bones and teeth. Restricts suture fusion and tooth number.

Cellular Location

[Interleukin-11 receptor subunit alpha]: Membrane; Single-pass type I membrane protein [Isoform HCR2]: Secreted

Tissue Location

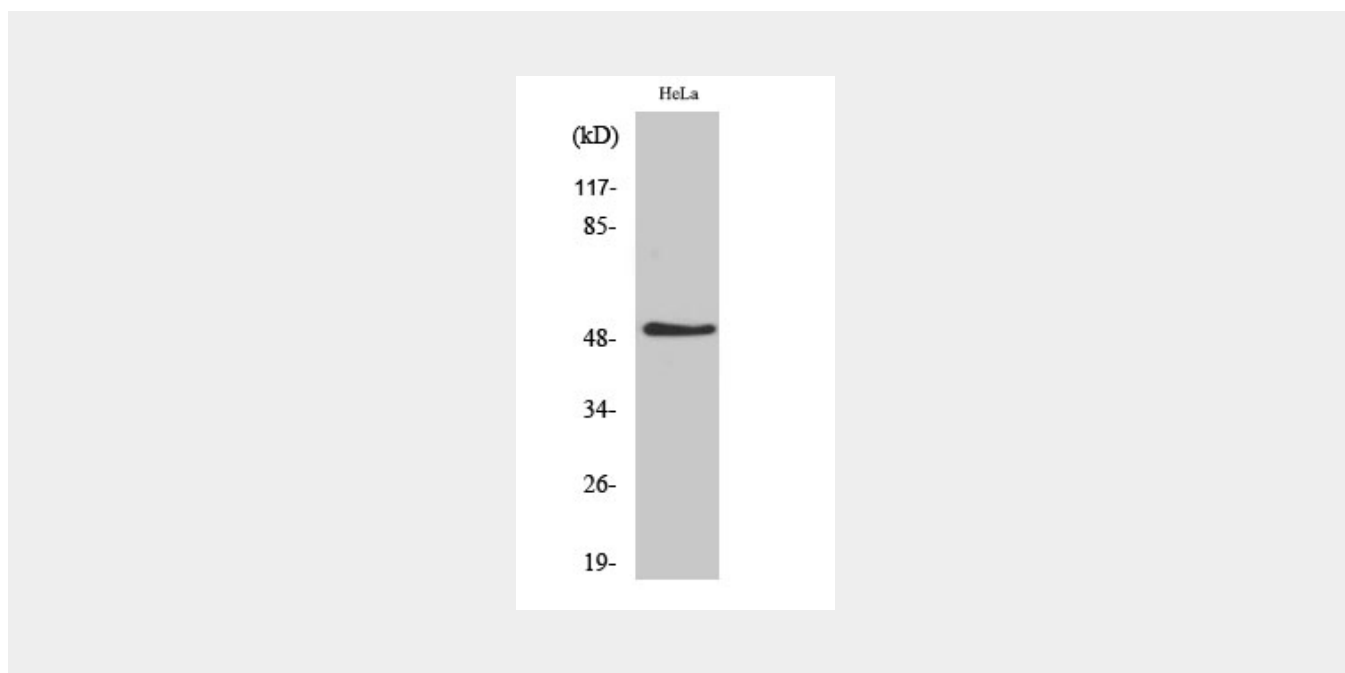
Expressed in a number of cell lines, including the myelogenous leukemia cell line K-562, the megakaryocytic leukemia cell line M-07e, the erythroleukemia cell line TF-1, and the osteosarcoma cell lines, MG-63 and SaOS-2 (PubMed:7670098). Also expressed in normal and malignant prostate epithelial cell lines. Expression levels are increased in prostate carcinoma.

IL-11R α Polyclonal Antibody - Protocols

Provided below are standard protocols that you may find useful for product applications.

- [Western Blot](#)
- [Blocking Peptides](#)
- [Dot Blot](#)
- [Immunohistochemistry](#)
- [Immunofluorescence](#)
- [Immunoprecipitation](#)
- [Flow Cytometry](#)
- [Cell Culture](#)

IL-11R α Polyclonal Antibody - Images



IL-11R α Polyclonal Antibody - Background

Receptor for interleukin-11. The receptor systems for IL6, LIF, OSM, CNTF, IL11 and CT1 can utilize IL6ST for initiating signal transmission. The IL11/IL11RA/IL6ST complex may be involved in the control of proliferation and/or differentiation of skeletogenic progenitor or other mesenchymal cells. Essential for the normal development of craniofacial bones and teeth. Restricts suture fusion and tooth number.