

IGSF4C Polyclonal Antibody
Catalog # AP70478**Specification**

IGSF4C Polyclonal Antibody - Product Information

Application	WB
Primary Accession	Q8NFZ8
Reactivity	Human, Mouse, Rat
Host	Rabbit
Clonality	Polyclonal

IGSF4C Polyclonal Antibody - Additional Information**Gene ID** 199731**Other Names**

CADM4; IGSF4C; NECL4; TSLL2; Cell adhesion molecule 4; Immunoglobulin superfamily member 4C; IgSF4C; Nectin-like protein 4; NECL-4; TSLC1-like protein 2

Dilution

WB~~Western Blot: 1/500 - 1/2000. Immunohistochemistry: 1/100 - 1/300. Immunofluorescence: 1/200 - 1/1000. ELISA: 1/20000. Not yet tested in other applications.

Format

Liquid in PBS containing 50% glycerol, 0.5% BSA and 0.09% (W/V) sodium azide.

Storage Conditions

-20°C

IGSF4C Polyclonal Antibody - Protein Information**Name** CADM4**Synonyms** IGSF4C, NECL4, TSLL2**Function**

Involved in the cell-cell adhesion. Has calcium- and magnesium-independent cell-cell adhesion activity. May have tumor- suppressor activity.

Cellular Location

Membrane; Single-pass type I membrane protein

Tissue Location

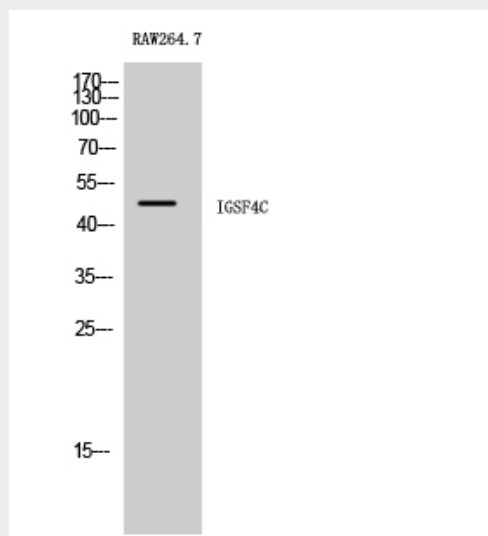
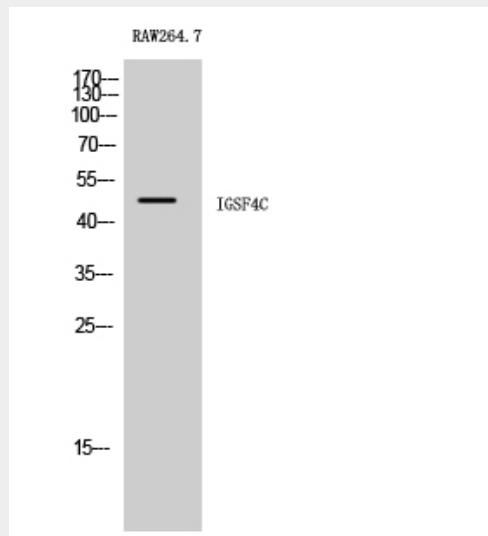
Expressed in brain, prostate, brain, kidney and some other organs.

IGSF4C Polyclonal Antibody - Protocols

Provided below are standard protocols that you may find useful for product applications.

- [Western Blot](#)
- [Blocking Peptides](#)
- [Dot Blot](#)
- [Immunohistochemistry](#)
- [Immunofluorescence](#)
- [Immunoprecipitation](#)
- [Flow Cytometry](#)
- [Cell Culture](#)

IGSF4C Polyclonal Antibody - Images



IGSF4C Polyclonal Antibody - Background

Involved in the cell-cell adhesion. Has calcium- and magnesium-independent cell-cell adhesion activity. May have tumor- suppressor activity.