

ICAM-1 Polyclonal Antibody
Catalog # AP70452**Specification**

ICAM-1 Polyclonal Antibody - Product Information

Application	WB
Primary Accession	P05362
Reactivity	Human
Host	Rabbit
Clonality	Polyclonal

ICAM-1 Polyclonal Antibody - Additional Information**Gene ID** 3383**Other Names**

ICAM1; Intercellular adhesion molecule 1; ICAM-1; Major group rhinovirus receptor; CD antigen CD54

Dilution

WB~~Western Blot: 1/500 - 1/2000. ELISA: 1/10000. Not yet tested in other applications.

Format

Liquid in PBS containing 50% glycerol, 0.5% BSA and 0.09% (W/V) sodium azide.

Storage Conditions

-20°C

ICAM-1 Polyclonal Antibody - Protein Information**Name** ICAM1**Function**

ICAM proteins are ligands for the leukocyte adhesion protein LFA-1 (integrin alpha-L/beta-2). During leukocyte trans-endothelial migration, ICAM1 engagement promotes the assembly of endothelial apical cups through ARHGEF26/SGEF and RHOG activation.

Cellular Location

Membrane; Single-pass type I membrane protein.

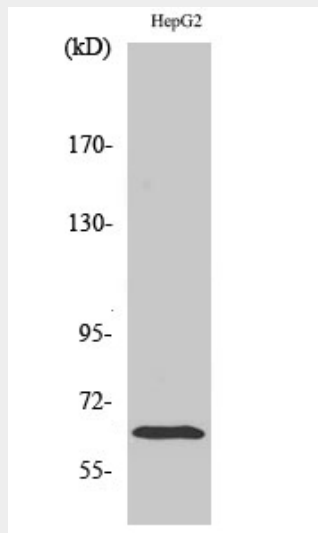
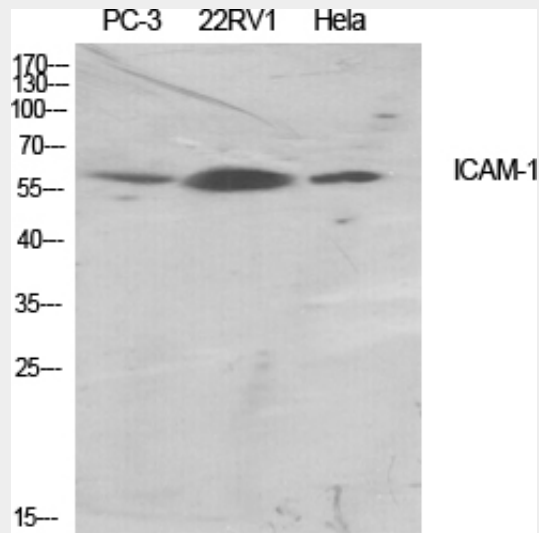
ICAM-1 Polyclonal Antibody - Protocols

Provided below are standard protocols that you may find useful for product applications.

- [Western Blot](#)
- [Blocking Peptides](#)

- [Dot Blot](#)
- [Immunohistochemistry](#)
- [Immunofluorescence](#)
- [Immunoprecipitation](#)
- [Flow Cytometry](#)
- [Cell Culture](#)

ICAM-1 Polyclonal Antibody - Images



ICAM-1 Polyclonal Antibody - Background

ICAM proteins are ligands for the leukocyte adhesion protein LFA-1 (integrin alpha-L/beta-2). During leukocyte trans- endothelial migration, ICAM1 engagement promotes the assembly of endothelial apical cups through ARHGEF26/SGEF and RHOG activation.