

HSP60 Polyclonal Antibody

Catalog # AP70438

Specification

HSP60 Polyclonal Antibody - Product Information

Application	WB
Primary Accession	Q0VDF9
Reactivity	Human, Mouse, Rat
Host	Rabbit
Clonality	Polyclonal

HSP60 Polyclonal Antibody - Additional Information

Gene ID 51182

Other Names

HSPA14; HSP60; HSP70L1; Heat shock 70 kDa protein 14; HSP70-like protein 1; Heat shock protein HSP60

Dilution

WB~~Western Blot: 1/500 - 1/2000. Immunohistochemistry: 1/100 - 1/300. ELISA: 1/40000. Not yet tested in other applications.

Format

Liquid in PBS containing 50% glycerol, 0.5% BSA and 0.09% (W/V) sodium azide.

Storage Conditions

-20°C

HSP60 Polyclonal Antibody - Protein Information

Name HSPA14

Synonyms HSP60, HSP70L1

Function

Component of the ribosome-associated complex (RAC), a complex involved in folding or maintaining nascent polypeptides in a folding- competent state. In the RAC complex, binds to the nascent polypeptide chain, while DNAJC2 stimulates its ATPase activity.

Cellular Location

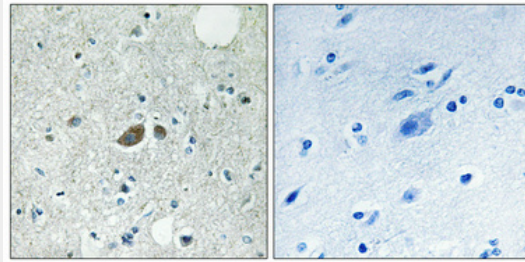
Cytoplasm, cytosol.

HSP60 Polyclonal Antibody - Protocols

Provided below are standard protocols that you may find useful for product applications.

- [Western Blot](#)
- [Blocking Peptides](#)
- [Dot Blot](#)
- [Immunohistochemistry](#)
- [Immunofluorescence](#)
- [Immunoprecipitation](#)
- [Flow Cytometry](#)
- [Cell Culture](#)

HSP60 Polyclonal Antibody - Images



HSP60 Polyclonal Antibody - Background

Component of the ribosome-associated complex (RAC), a complex involved in folding or maintaining nascent polypeptides in a folding-competent state. In the RAC complex, binds to the nascent polypeptide chain, while DNAJC2 stimulates its ATPase activity.