

HP1 α Polyclonal Antibody
Catalog # AP70406**Specification****HP1 α Polyclonal Antibody - Product Information**

Application	WB
Primary Accession	P45973
Reactivity	Human, Mouse
Host	Rabbit
Clonality	Polyclonal

HP1 α Polyclonal Antibody - Additional Information**Gene ID** 23468**Other Names**

CBX5; HP1A; Chromobox protein homolog 5; Antigen p25; Heterochromatin protein 1 homolog alpha; HP1 alpha

Dilution

WB~~Western Blot: 1/500 - 1/2000. Immunohistochemistry: 1/100 - 1/300. Immunofluorescence: 1/200 - 1/1000. ELISA: 1/20000. Not yet tested in other applications.

Format

Liquid in PBS containing 50% glycerol, 0.5% BSA and 0.09% (W/V) sodium azide.

Storage Conditions

-20°C

HP1 α Polyclonal Antibody - Protein Information**Name** CBX5**Synonyms** HP1A**Function**

Component of heterochromatin that recognizes and binds histone H3 tails methylated at 'Lys-9' (H3K9me), leading to epigenetic repression. In contrast, it is excluded from chromatin when 'Tyr-41' of histone H3 is phosphorylated (H3Y41ph) (PubMed: [19783980](http://www.uniprot.org/citations/19783980)). May contribute to the association of heterochromatin with the inner nuclear membrane by interactions with the lamin-B receptor (LBR) (PubMed: [19783980](http://www.uniprot.org/citations/19783980)). Involved in the formation of kinetochore through interaction with the MIS12 complex subunit NSL1 (PubMed: [19783980](http://www.uniprot.org/citations/19783980), PubMed: [20231385](http://www.uniprot.org/citations/20231385)). Required for the formation of the inner centromere (PubMed: [20231385](http://www.uniprot.org/citations/20231385)).

Cellular Location

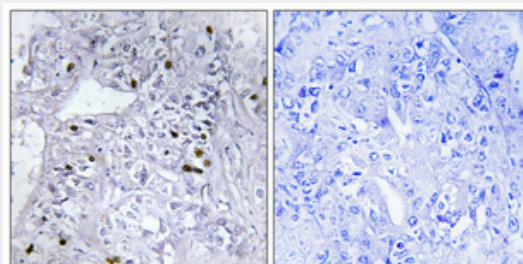
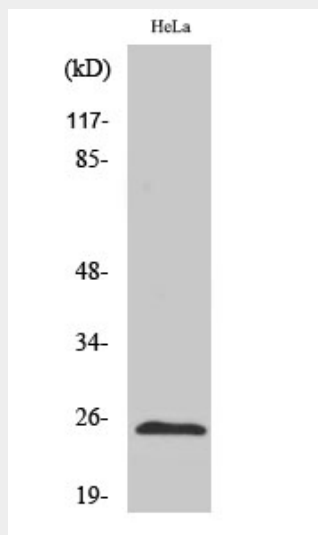
Nucleus. Chromosome. Chromosome, centromere. Note=Colocalizes with HNRNPU in the nucleus (PubMed:19617346). Component of centromeric and pericentromeric heterochromatin. Associates with chromosomes during mitosis. Associates specifically with chromatin during metaphase and anaphase (PubMed:19617346). Localizes to sites of DNA damage (PubMed:28977666)

HP1 α Polyclonal Antibody - Protocols

Provided below are standard protocols that you may find useful for product applications.

- [Western Blot](#)
- [Blocking Peptides](#)
- [Dot Blot](#)
- [Immunohistochemistry](#)
- [Immunofluorescence](#)
- [Immunoprecipitation](#)
- [Flow Cytometry](#)
- [Cell Culture](#)

HP1 α Polyclonal Antibody - Images



HP1 α Polyclonal Antibody - Background

Component of heterochromatin that recognizes and binds histone H3 tails methylated at 'Lys-9'

(H3K9me), leading to epigenetic repression. In contrast, it is excluded from chromatin when 'Tyr-41' of histone H3 is phosphorylated (H3Y41ph). Can interact with lamin-B receptor (LBR). This interaction can contribute to the association of the heterochromatin with the inner nuclear membrane. Involved in the formation of functional kinetochore through interaction with MIS12 complex proteins.