

**Hox-C6 Polyclonal Antibody**  
Catalog # AP70401**Specification**

---

**Hox-C6 Polyclonal Antibody - Product Information**

Application	<b>WB</b>
Primary Accession	<a href="#">P09630</a>
Reactivity	<b>Human, Mouse</b>
Host	<b>Rabbit</b>
Clonality	<b>Polyclonal</b>

**Hox-C6 Polyclonal Antibody - Additional Information****Gene ID** 3223**Other Names**

HOXC6; HOX3C; Homeobox protein Hox-C6; Homeobox protein CP25; Homeobox protein HHO.C8; Homeobox protein Hox-3C

**Dilution**

WB~~Western Blot: 1/500 - 1/2000. Immunohistochemistry: 1/100 - 1/300. Immunofluorescence: 1/200 - 1/1000. ELISA: 1/10000. Not yet tested in other applications.

**Format**

Liquid in PBS containing 50% glycerol, 0.5% BSA and 0.09% (W/V) sodium azide.

**Storage Conditions**

-20°C

**Hox-C6 Polyclonal Antibody - Protein Information****Name** HOXC6**Synonyms** HOX3C**Function**

Sequence-specific transcription factor which is part of a developmental regulatory system that provides cells with specific positional identities on the anterior-posterior axis.

**Cellular Location**

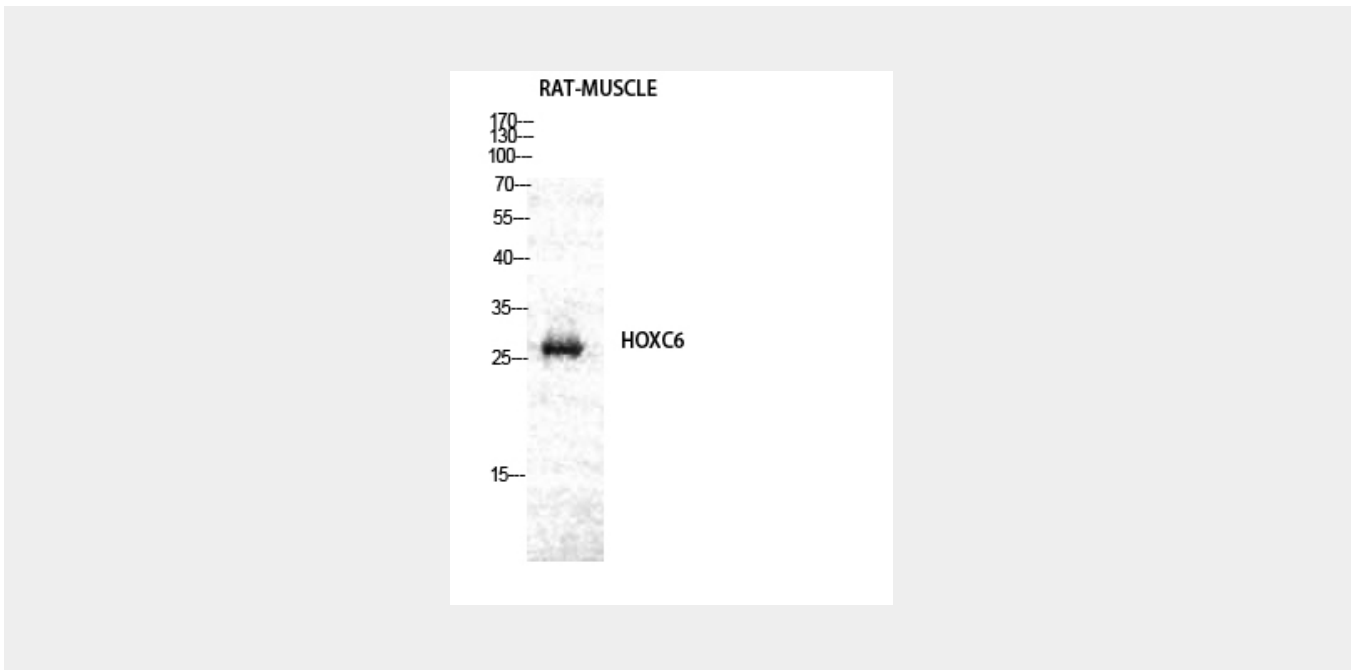
Nucleus.

**Hox-C6 Polyclonal Antibody - Protocols**

Provided below are standard protocols that you may find useful for product applications.

- [Western Blot](#)
- [Blocking Peptides](#)
- [Dot Blot](#)
- [Immunohistochemistry](#)
- [Immunofluorescence](#)
- [Immunoprecipitation](#)
- [Flow Cytometry](#)
- [Cell Culture](#)

### Hox-C6 Polyclonal Antibody - Images



### Hox-C6 Polyclonal Antibody - Background

Sequence-specific transcription factor which is part of a developmental regulatory system that provides cells with specific positional identities on the anterior-posterior axis.