

hnRNP L Polyclonal Antibody
Catalog # AP70386**Specification****hnRNP L Polyclonal Antibody - Product Information**

Application	WB
Primary Accession	P14866
Reactivity	Human, Mouse
Host	Rabbit
Clonality	Polyclonal

hnRNP L Polyclonal Antibody - Additional Information**Gene ID** 3191**Other Names**

HNRNPL; HNRPL; P/OKcl.14; Heterogeneous nuclear ribonucleoprotein L; hnRNP L

Dilution

WB~~Western Blot: 1/500 - 1/2000. Immunohistochemistry: 1/100 - 1/300. Immunofluorescence: 1/200 - 1/1000. ELISA: 1/20000. Not yet tested in other applications.

Format

Liquid in PBS containing 50% glycerol, 0.5% BSA and 0.09% (W/V) sodium azide.

Storage Conditions

-20°C

hnRNP L Polyclonal Antibody - Protein Information**Name** HNRNPL**Synonyms** HNRPL**Function**

Splicing factor binding to exonic or intronic sites and acting as either an activator or repressor of exon inclusion. Exhibits a binding preference for CA-rich elements (PubMed: [11809897](http://www.uniprot.org/citations/11809897), PubMed: [22570490](http://www.uniprot.org/citations/22570490), PubMed: [24164894](http://www.uniprot.org/citations/24164894), PubMed: [25623890](http://www.uniprot.org/citations/25623890), PubMed: [26051023](http://www.uniprot.org/citations/26051023)). Component of the heterogeneous nuclear ribonucleoprotein (hnRNP) complexes and associated with most nascent transcripts (PubMed: [2687284](http://www.uniprot.org/citations/2687284)). Associates, together with APEX1, to the negative calcium responsive element (nCaRE) B2 of the APEX2 promoter (PubMed: [11809897](http://www.uniprot.org/citations/11809897)). As part of a ribonucleoprotein complex composed at least of ZNF827, HNRNPK and the circular RNA

circZNF827 that nucleates the complex on chromatin, may negatively regulate the transcription of genes involved in neuronal differentiation (PubMed:33174841). Regulates alternative splicing of a core group of genes involved in neuronal differentiation, likely by mediating H3K36me3-coupled transcription elongation and co-transcriptional RNA processing via interaction with CHD8.

Cellular Location

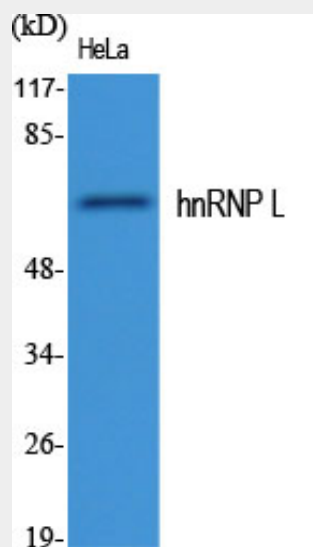
Nucleus, nucleoplasm. Cytoplasm. Note=Localized in cytoplasmic mRNP granules containing untranslated mRNAs. These granules are not identical with P bodies or stress granules

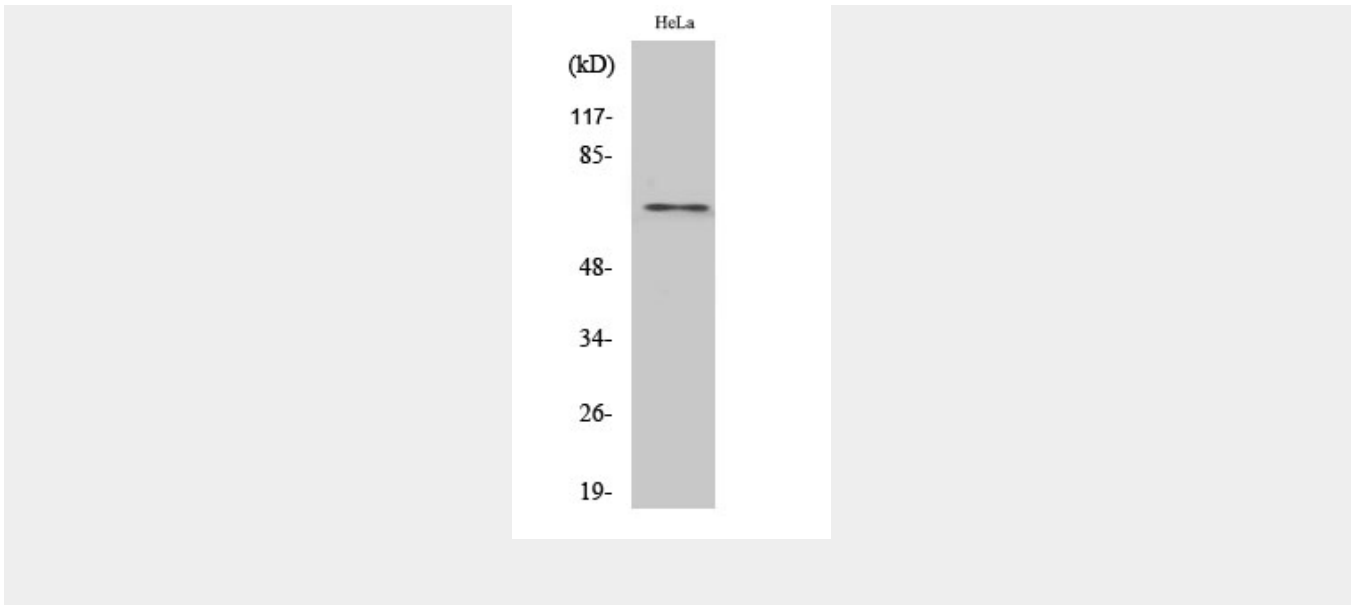
hnRNP L Polyclonal Antibody - Protocols

Provided below are standard protocols that you may find useful for product applications.

- [Western Blot](#)
- [Blocking Peptides](#)
- [Dot Blot](#)
- [Immunohistochemistry](#)
- [Immunofluorescence](#)
- [Immunoprecipitation](#)
- [Flow Cytometry](#)
- [Cell Culture](#)

hnRNP L Polyclonal Antibody - Images





hnRNP L Polyclonal Antibody - Background

Splicing factor binding to exonic or intronic sites and acting as either an activator or repressor of exon inclusion. Exhibits a binding preference for CA-rich elements (PubMed:11809897, PubMed:22570490, PubMed:24164894, PubMed:25623890, PubMed:26051023). Component of the heterogeneous nuclear ribonucleoprotein (hnRNP) complexes and associated with most nascent transcripts (PubMed:2687284). Associates, together with APEX1, to the negative calcium responsive element (nCaRE) B2 of the APEX2 promoter (PubMed:11809897).