

**GPR126 Polyclonal Antibody**  
Catalog # AP70150**Specification**

---

**GPR126 Polyclonal Antibody - Product Information**

Application	<b>WB</b>
Primary Accession	<a href="#">Q86SQ4</a>
Reactivity	<b>Human</b>
Host	<b>Rabbit</b>
Clonality	<b>Polyclonal</b>

**GPR126 Polyclonal Antibody - Additional Information****Gene ID** 57211**Other Names**

GPR126; DREG; VIGR; G-protein coupled receptor 126; Developmentally regulated G-protein-coupled receptor; Vascular inducible G protein-coupled receptor

**Dilution**

WB~~Western Blot: 1/500 - 1/2000. Immunohistochemistry: 1/100 - 1/300. Immunofluorescence: 1/200 - 1/1000. ELISA: 1/5000. Not yet tested in other applications.

**Format**

Liquid in PBS containing 50% glycerol, 0.5% BSA and 0.09% (W/V) sodium azide.

**Storage Conditions**

-20°C

**GPR126 Polyclonal Antibody - Protein Information****Name** ADGRG6 ([HGNC:13841](#))**Synonyms** DREG, GPR126, VIGR**Function**

G-protein coupled receptor which is activated by type IV collagen, a major constituent of the basement membrane (By similarity). Couples to G(i)-proteins as well as G(s)-proteins (PubMed:<a href="http://www.uniprot.org/citations/24227709" target="\_blank">24227709</a>). Essential for normal differentiation of promyelinating Schwann cells and for normal myelination of axons (PubMed:<a href="http://www.uniprot.org/citations/24227709" target="\_blank">24227709</a>). Regulates neural, cardiac and ear development via G-protein- and/or N-terminus- dependent signaling (By similarity). May act as a receptor for PRNP which may promote myelin homeostasis (By similarity).

**Cellular Location**

Cell membrane; Multi-pass membrane protein. Note=Detected on the cell surface of activated but not resting umbilical vein

### Tissue Location

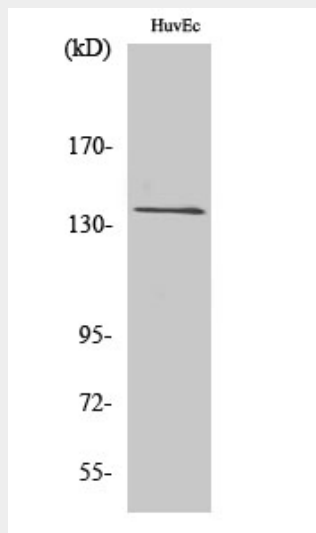
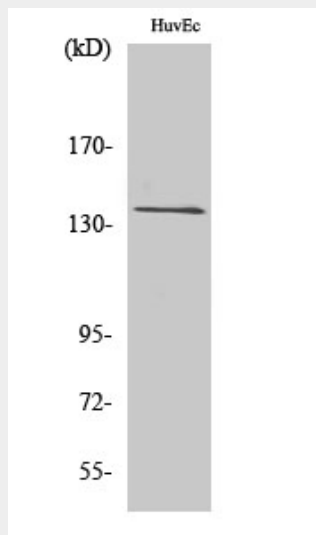
Expressed in placenta and to a lower extent in pancreas and liver. Detected in aortic endothelial cells but not in skin microvascular endothelial cells.

### GPR126 Polyclonal Antibody - Protocols

Provided below are standard protocols that you may find useful for product applications.

- [Western Blot](#)
- [Blocking Peptides](#)
- [Dot Blot](#)
- [Immunohistochemistry](#)
- [Immunofluorescence](#)
- [Immunoprecipitation](#)
- [Flow Cytometry](#)
- [Cell Culture](#)

### GPR126 Polyclonal Antibody - Images



### **GPR126 Polyclonal Antibody - Background**

G-protein coupled receptor which is activated by type IV collagen, a major constituent of the basement membrane (By similarity). Couples to G(i)-proteins as well as G(s)-proteins (PubMed:24227709). Essential for normal differentiation of promyelinating Schwann cells and for normal myelination of axons (PubMed:24227709). Regulates neural, cardiac and ear development via G-protein- and/or N-terminus-dependent signaling (By similarity). May act as a receptor for PRNP which may promote myelin homeostasis (By similarity).