

**GPR119 Polyclonal Antibody**  
Catalog # AP70145**Specification**

---

**GPR119 Polyclonal Antibody - Product Information**

Application	WB
Primary Accession	<a href="#">Q8TDV5</a>
Reactivity	Human
Host	Rabbit
Clonality	Polyclonal

**GPR119 Polyclonal Antibody - Additional Information****Gene ID** 139760**Other Names**

GPR119; Glucose-dependent insulinotropic receptor; G-protein coupled receptor 119

**Dilution**

WB~~Western Blot: 1/500 - 1/2000. Immunofluorescence: 1/200 - 1/1000. ELISA: 1/10000. Not yet tested in other applications.

**Format**

Liquid in PBS containing 50% glycerol, 0.5% BSA and 0.09% (W/V) sodium azide.

**Storage Conditions**

-20°C

**GPR119 Polyclonal Antibody - Protein Information****Name** GPR119**Function**

Receptor for the endogenous fatty-acid ethanolamide oleoylethanolamide (OEA) and lysophosphatidylcholine (LPC). Functions as a glucose-dependent insulinotropic receptor. The activity of this receptor is mediated by G proteins which activate adenylate cyclase. Seems to act through a G(s) mediated pathway.

**Cellular Location**

Cell membrane; Multi-pass membrane protein.

**Tissue Location**

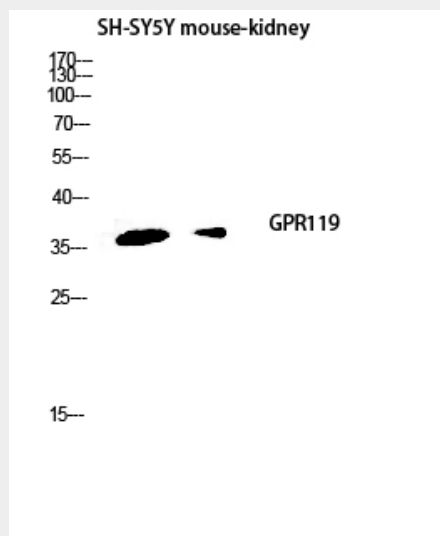
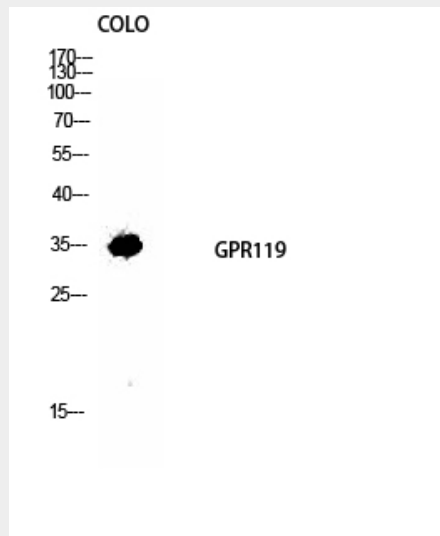
Predominantly expressed in the pancreas, especially in the islets.

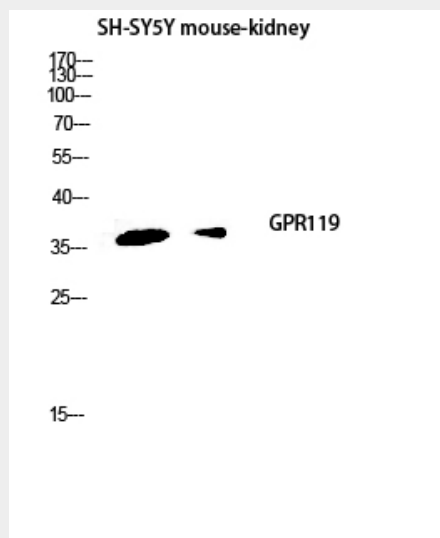
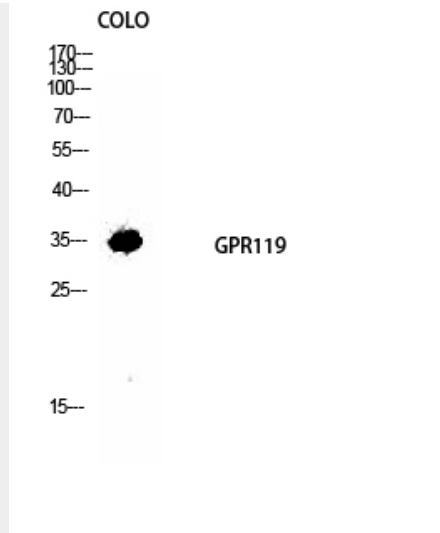
**GPR119 Polyclonal Antibody - Protocols**

Provided below are standard protocols that you may find useful for product applications.

- [Western Blot](#)
- [Blocking Peptides](#)
- [Dot Blot](#)
- [Immunohistochemistry](#)
- [Immunofluorescence](#)
- [Immunoprecipitation](#)
- [Flow Cytometry](#)
- [Cell Culture](#)

### GPR119 Polyclonal Antibody - Images





### **GPR119 Polyclonal Antibody - Background**

Receptor for the endogenous fatty-acid ethanolamide oleoylethanolamide (OEA) and lysophosphatidylcholine (LPC). Functions as a glucose-dependent insulinotropic receptor. The activity of this receptor is mediated by G proteins which activate adenylate cyclase. Seems to act through a G(s) mediated pathway.